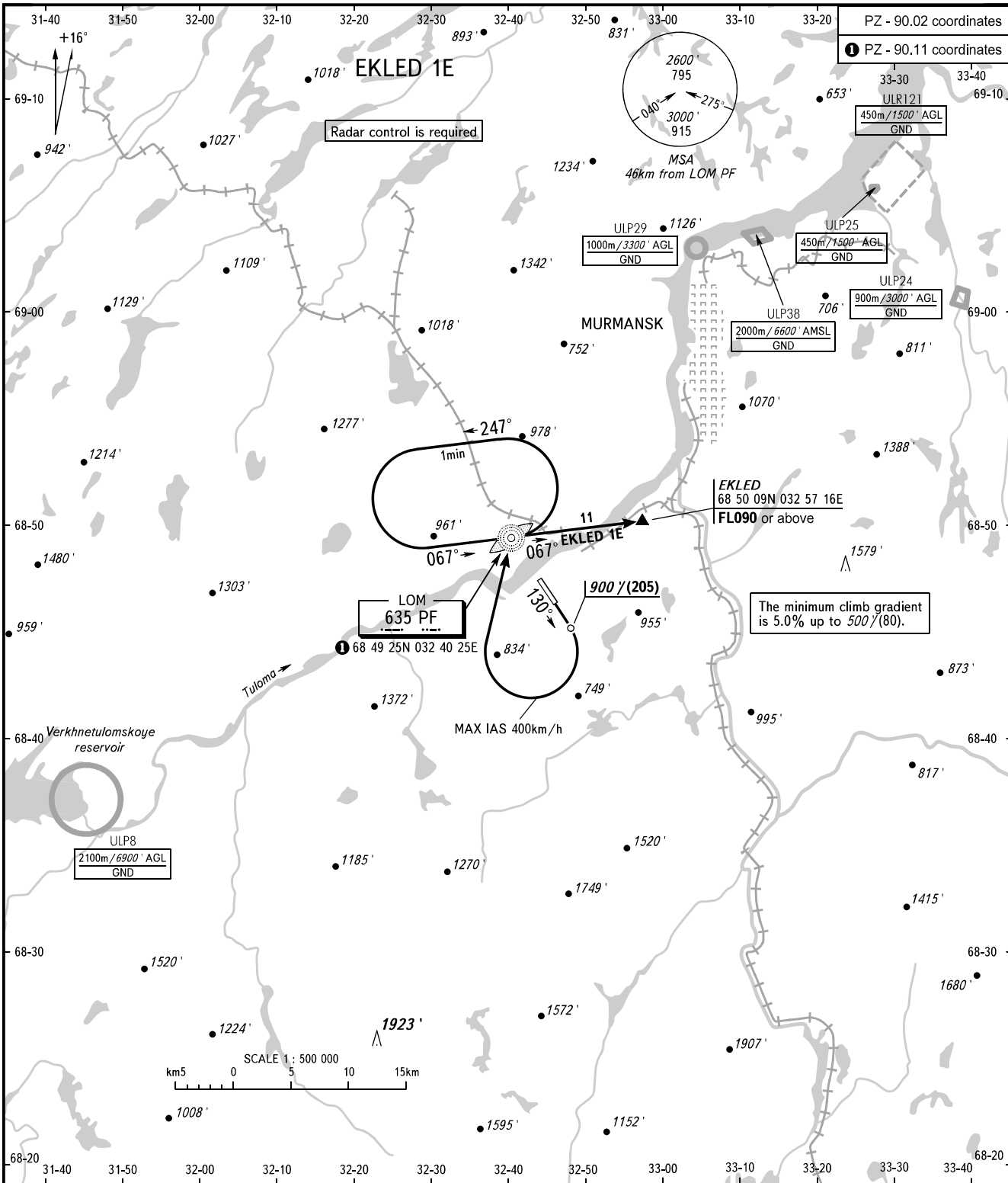


STANDARD DEPARTURE CHART  
INSTRUMENT (SID) - ICAO

TRANSITION ALTITUDE: 4000'  
TRANSITION HEIGHT: (1200)

MURMANSK, RUSSIA  
MURMANSK  
RWY 13



TOWER	120.300	<b>WARNING:</b> 1. Turn before passing DER is PROHIBITED. 2. There are close-in obstacles with MAX ELEV (60').
RADAR	120.700	

BEARINGS AND TRACKS ARE MAGNETIC  
ALTITUDES AND ELEVATIONS IN FEET  
HEIGHTS IN METRES  
DISTANCES IN KILOMETRES

Alt set: -QNH(QFE on req);  
-hPa(mm on req).

CHANGE: Heading