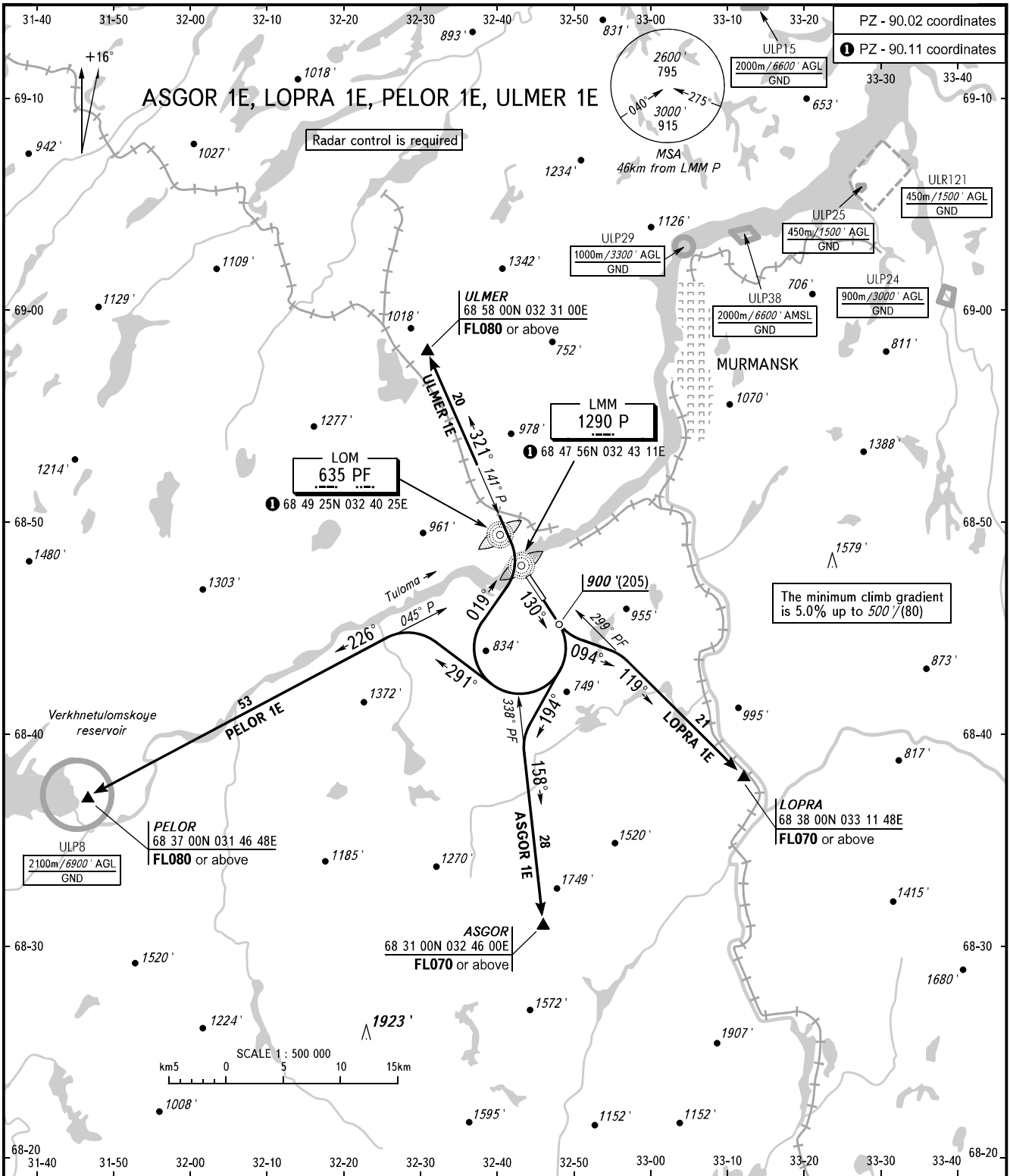


STANDARD DEPARTURE CHART
INSTRUMENT (SID) - ICAO

TRANSITION ALTITUDE: 4000'
TRANSITION HEIGHT: (1200)

MURMANSK, RUSSIA
MURMANSK
RWY 13



TOWER	120.300	WARNING: 1. The minimum climb gradients are as follows: - 5.0% up to FL080 for SID PELOR 1E, ULMER 1E; - 9.5% up to FL070 for SID LOPRA 1E; - 6.8% up to FL070 for SID ASGOR 1E. 2. If unable to maintain minimum climb gradient the flight crew shall advise ATS unit. 3. There are close-in obstacles with MAX ELEV (60').
RADAR	120.700	
BEARINGS AND TRACKS ARE MAGNETIC ALTITUDES AND ELEVATIONS IN FEET HEIGHTS IN METRES DISTANCES IN KILOMETRES		Alt set: -QNH(QFE on req); -hPa(mm on req).

CHANGE: Heading