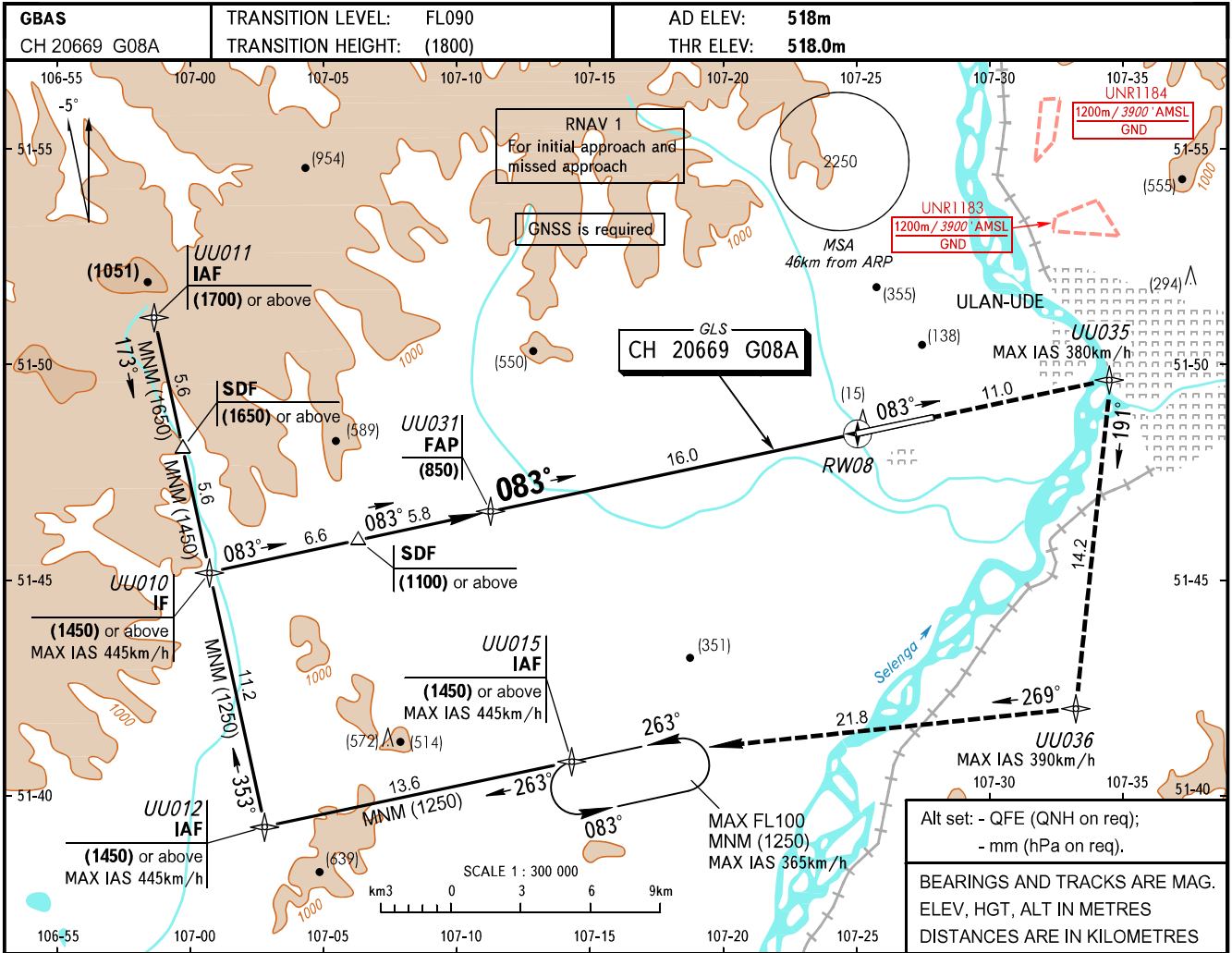


**INSTRUMENT
APPROACH
CHART - ICAO**

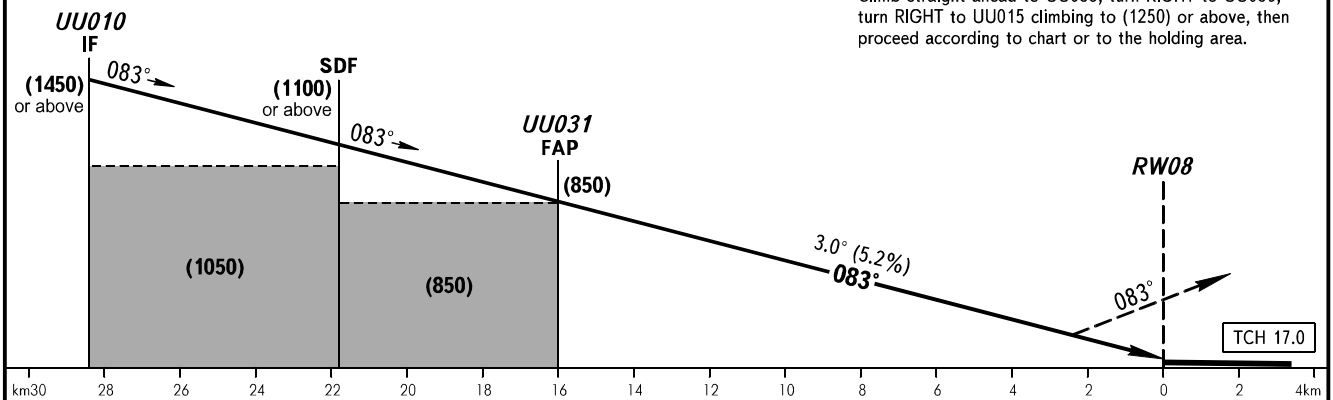
APPROACH **129.300**
TOWER **118.100**

**ULAN-UDE, RUSSIA
MUKHINO
GLS RWY 08**



MISSED APPROACH

Climb straight ahead to UU035, turn RIGHT to UU036, turn RIGHT to UU015 climbing to (1250) or above, then proceed according to chart or to the holding area.



OCA(H)	MNM climb gradient for missed APCH	A	B	C	D						
Straight-in	CAT I	5.0%	581(63)	584(66)	587(69)	590(72)					
		2.5%	709(191)	712(194)	715(197)	718(200)					
Circling		840(320)	975(455)	1170(655)	1295(780)						
GROUND SPEED		km/h	150	180	210	240	270	300	330	360	390
RATE OF DESCENT		m/s	2.2	2.6	3.0	3.5	3.9	4.3	4.8	5.2	5.6

WARNING

Turn before RW08 is PROHIBITED.