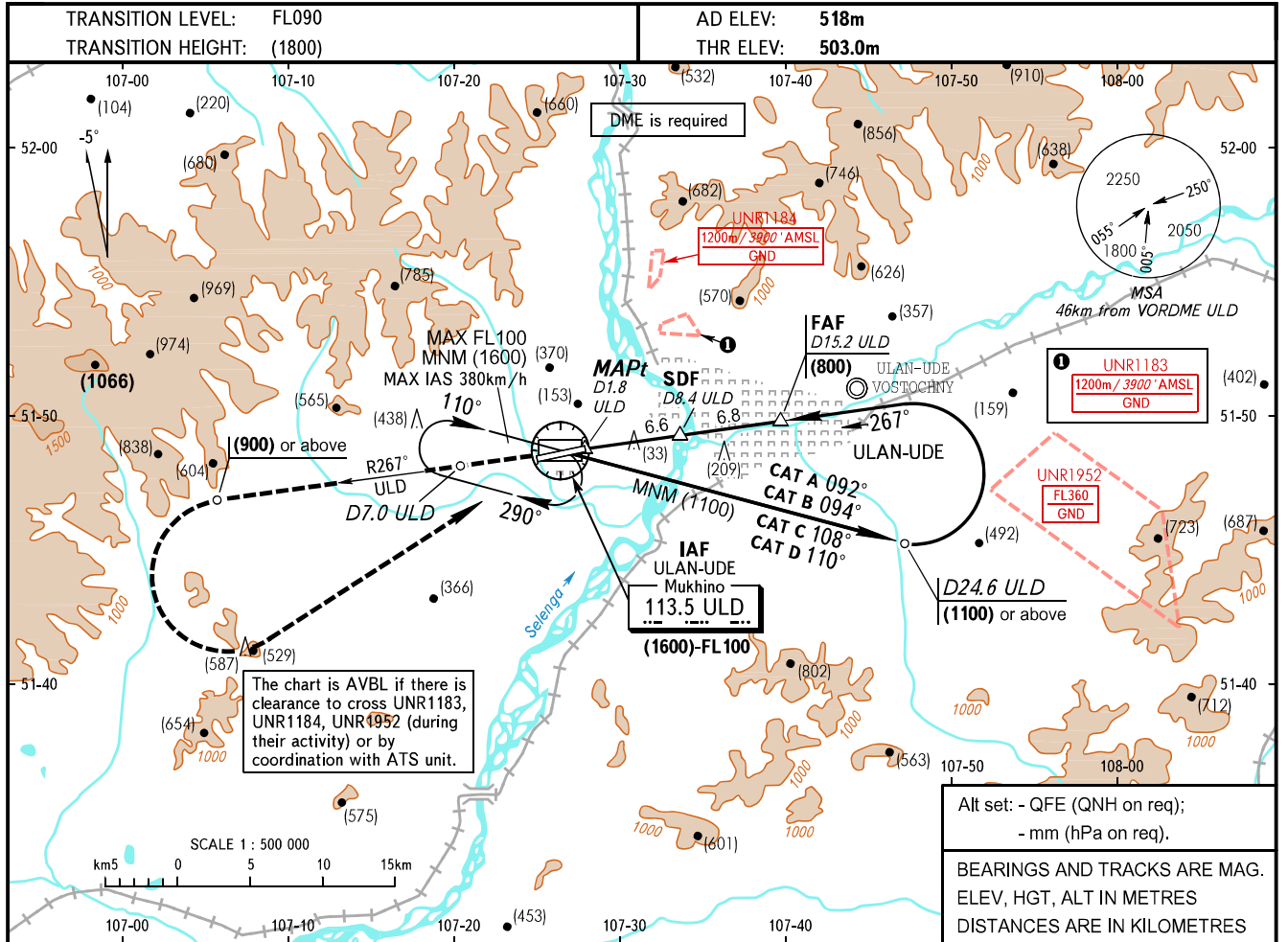


**INSTRUMENT
APPROACH
CHART - ICAO**

APPROACH **129.300**
TOWER **118.100**

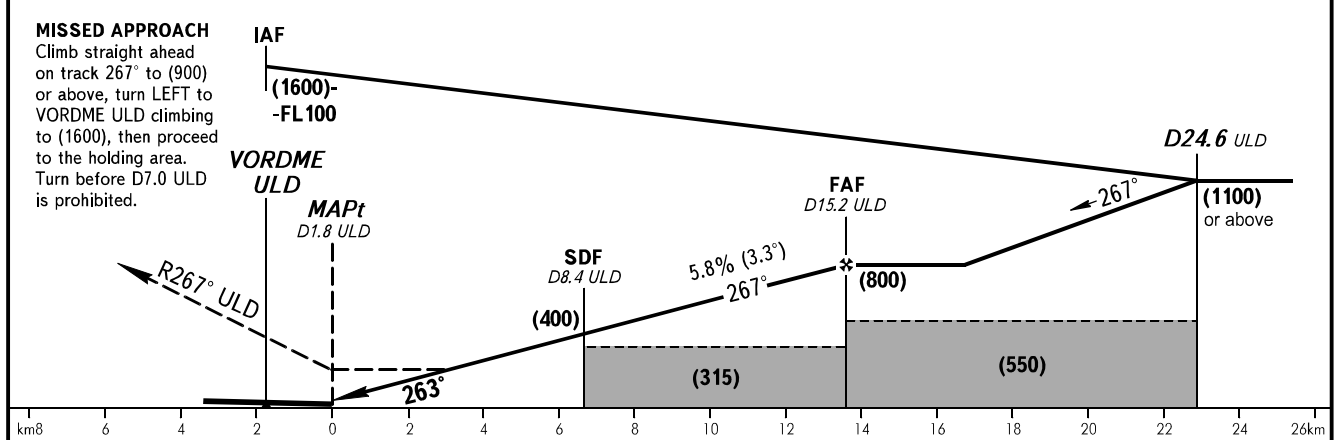
**ULAN-UDE, RUSSIA
MUKHINO
VOR RWY 26**



The chart is AVBL if there is clearance to cross UNR1183, UNR1184, UNR1952 (during their activity) or by coordination with ATS unit.

Alt set: - QFE (QNH on req);
- mm (hPa on req).
BEARINGS AND TRACKS ARE MAG.
ELEV, HGT, ALT IN METRES
DISTANCES ARE IN KILOMETRES

DME ULD	6.0	8.0	10.0	12.0	14.0	15.2
HEIGHT	(265)	(380)	(495)	(610)	(730)	(800)



OCA(H)	MNM climb gradient for missed APCH	A	B	C	D	WARNING: 1. The final approach track is offset by 4° from RCL. 2. MAPt at D1.8 ULD. Timing not authorized for defining MAPt.					
Straight-in	With SDF	3.1%	690(185)	690(185)	690(185)		690(185)				
	Approach	WO SDF	2.5%	745(240)	745(240)		745(240)	745(240)			
Circling		2.5%	820(315)	820(315)	820(315)		820(315)				
GROUND SPEED		km/h	150	180	210	240	270	300	330	360	390
RATE OF DESCENT		m/s	2.4	2.9	3.4	3.9	4.4	4.8	5.3	5.8	6.3

CHANGE: Heading