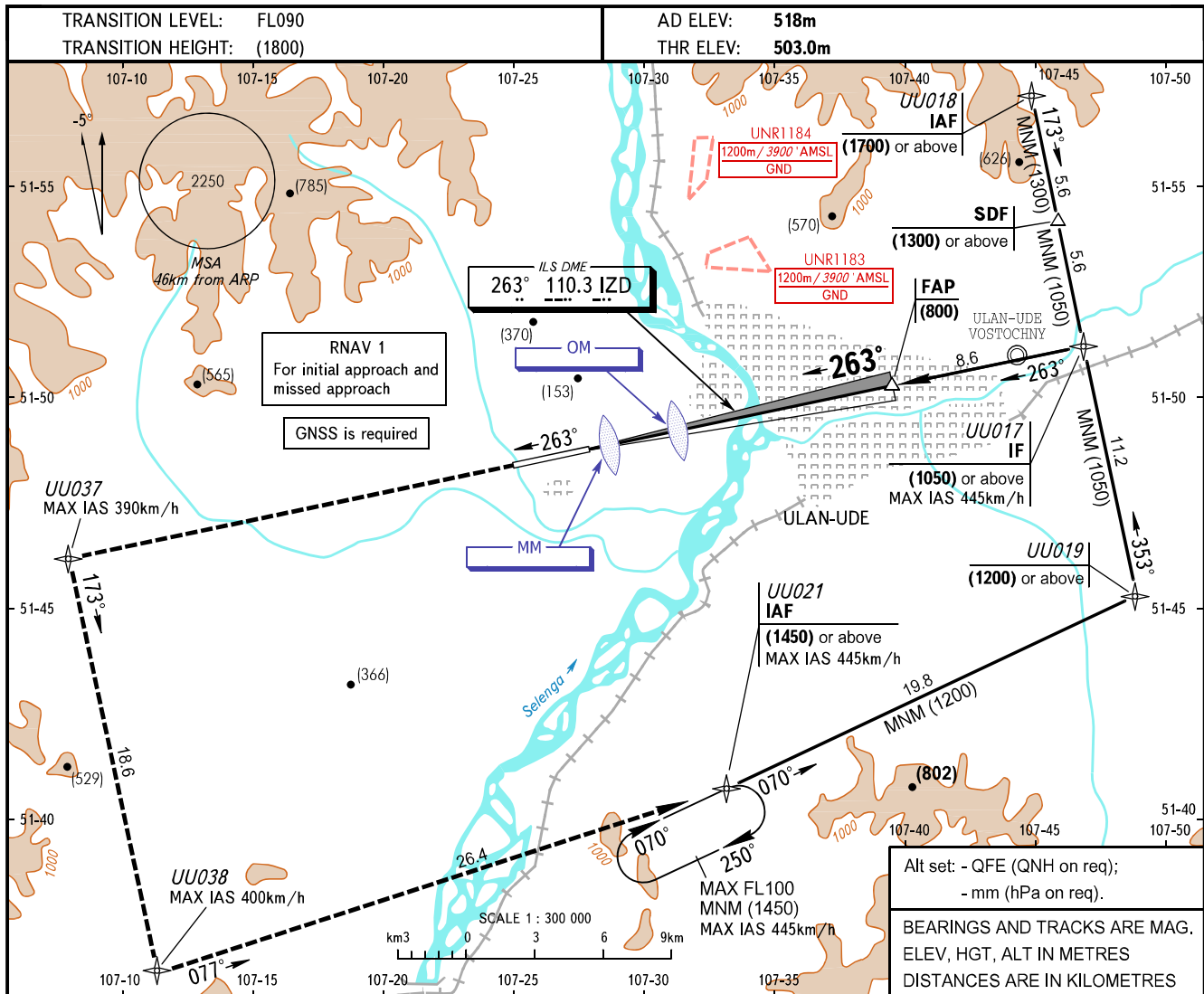


**INSTRUMENT
APPROACH
CHART - ICAO**

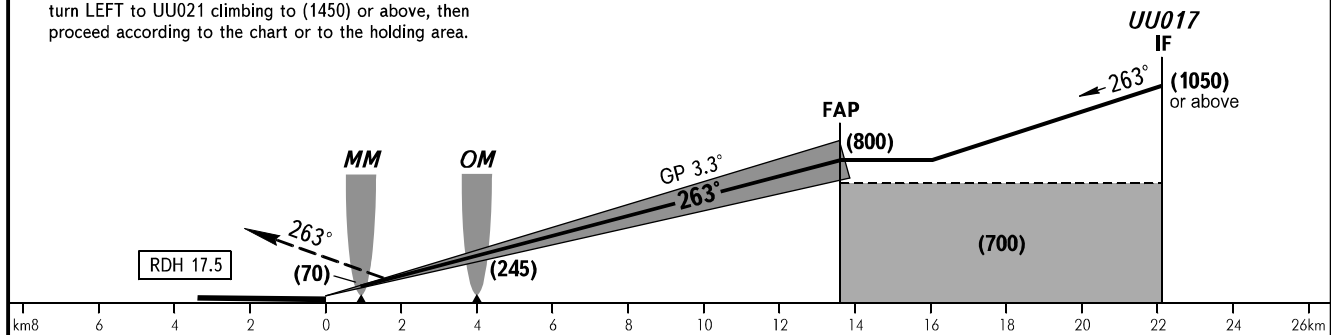
APPROACH **129.300**
TOWER **118.100**

ULAN-UDE, RUSSIA
MUKHINO
ILS Z CAT I RWY 26



MISSED APPROACH

Climb straight ahead to UU037, turn LEFT to UU038, turn LEFT to UU021 climbing to (1450) or above, then proceed according to the chart or to the holding area.



| OCA(H) | | A | B | C | D | | | | | |
|-----------------|--------------|----------|----------|-----------|-----------|-----|-----|-----|-----|-----|
| Straight-in | CAT I | 605(102) | 608(105) | 611(108) | 614(111) | | | | | |
| | Approach | | | | | | | | | |
| Circling | | 840(320) | 975(455) | 1170(655) | 1295(780) | | | | | |
| GROUND SPEED | km/h | 150 | 180 | 210 | 240 | 270 | 300 | 330 | 360 | 390 |
| RATE OF DESCENT | m/s | 2.4 | 2.9 | 3.4 | 3.9 | 4.4 | 4.8 | 5.3 | 5.8 | 6.3 |

WARNING
Turn before MM is PROHIBITED.