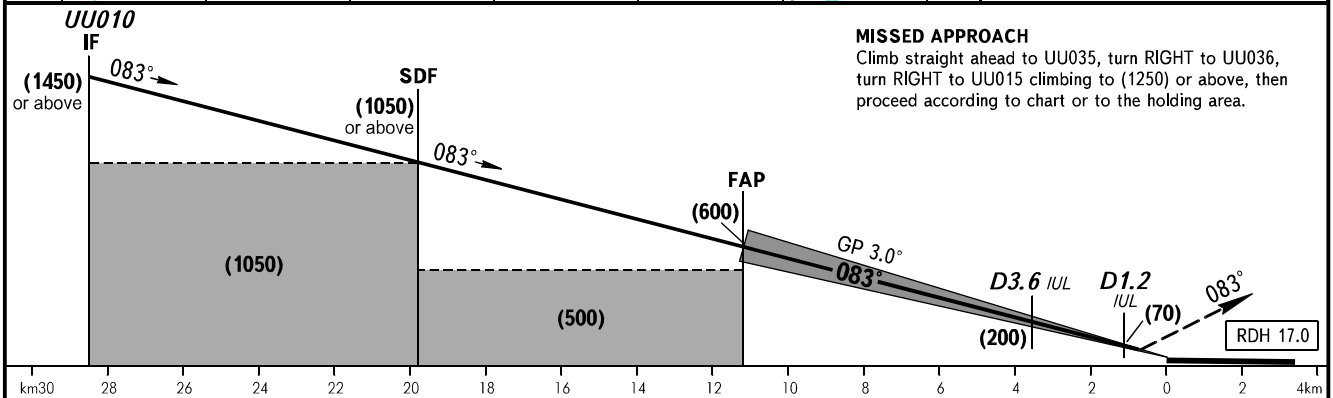
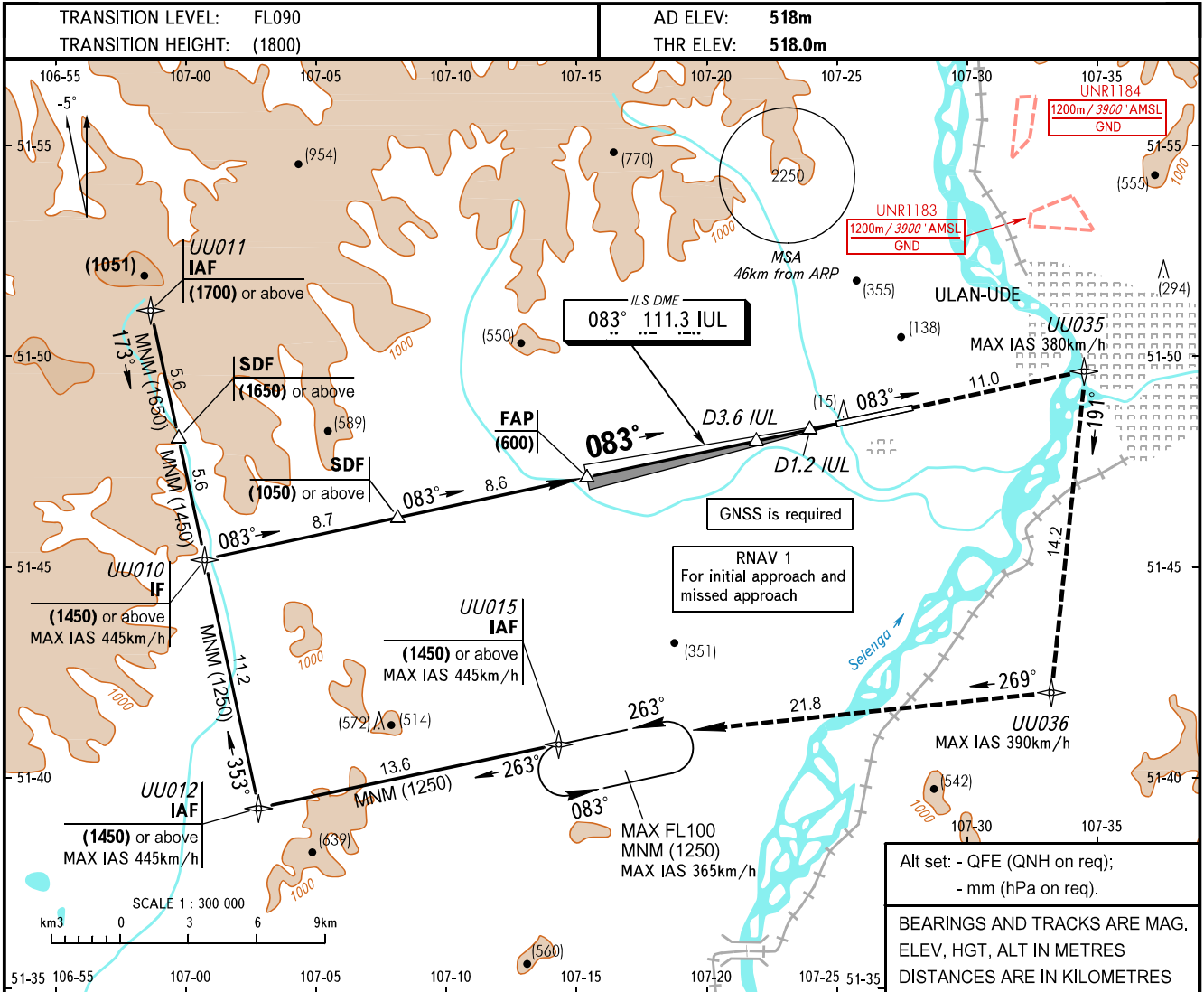


**INSTRUMENT  
APPROACH  
CHART - ICAO**

APPROACH **129.300**  
TOWER **118.100**

**ULAN-UDE, RUSSIA  
MUKHINO  
ILS Z CAT I RWY 08**



OCA(H)	MNM climb gradient for missed APCH	A	B	C	D						
Straight-in	CAT I	5.0%	581(63)	584(66)	587(69)	590(72)					
		2.5%	709(191)	712(194)	715(197)	718(200)					
Approach											
Circling		840(320)	975(455)	1170(655)	1295(780)						
GROUND SPEED		km/h	150	180	210	240	270	300	330	360	390
RATE OF DESCENT		m/s	2.2	2.6	3.0	3.5	3.9	4.3	4.8	5.2	5.6

**WARNING**  
Turn before RW08 is PROHIBITED.

CHANGE: Heading