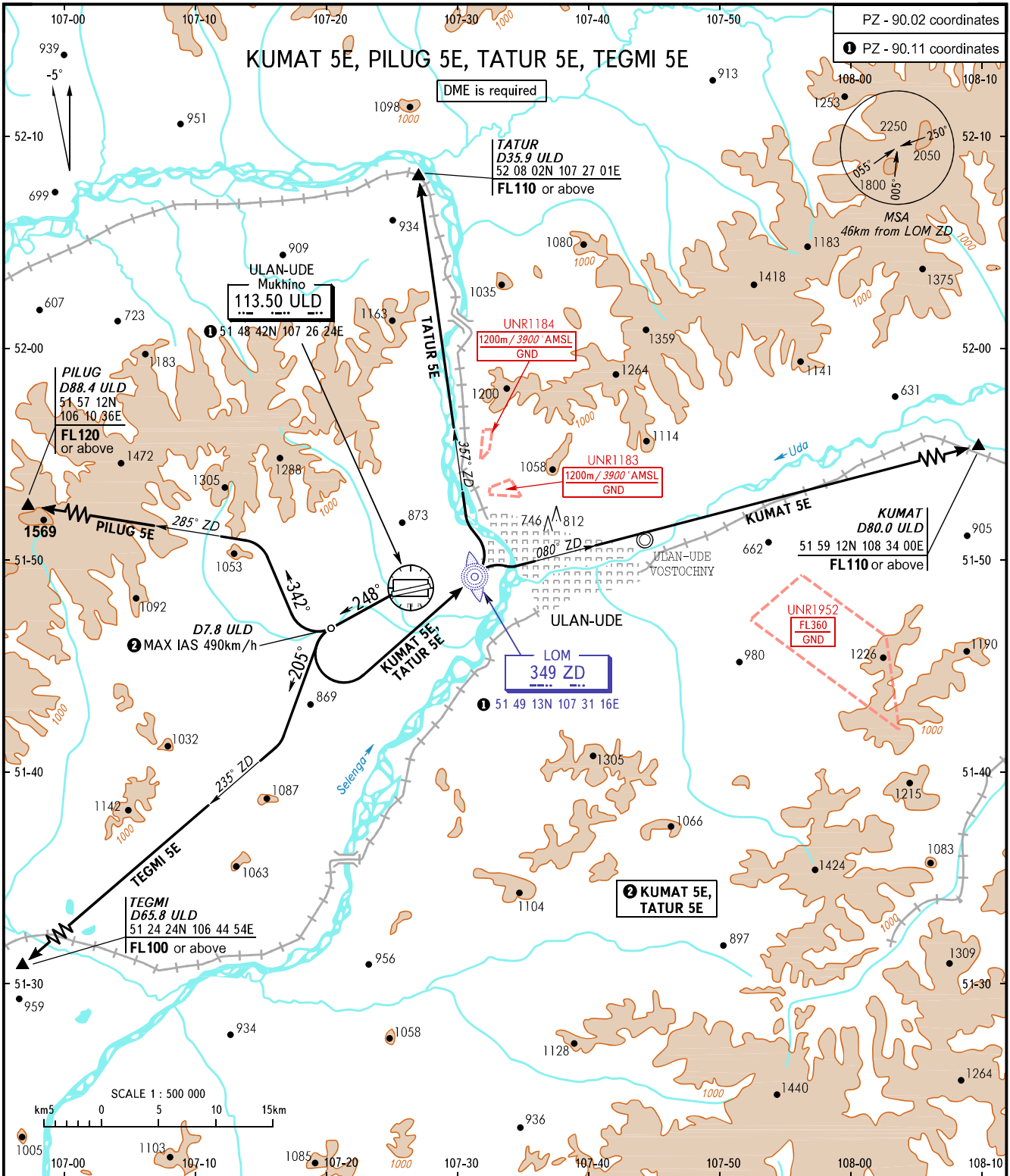


STANDARD DEPARTURE CHART
INSTRUMENT (SID) - ICAO

TRANSITION
HEIGHT : (1800)

ULAN-UDE, RUSSIA
MUKHINO
RWY 26



<p>TOWER APPROACH 118.100 129.300</p>	<p>WARNING:</p> <ol style="list-style-type: none"> 1. Take-off track is offset by 15° from RCL. 2. KUMAT 5E is AVBL if there is clearance to cross UNR1952 (during its activity) or by coordination with ATS unit. 3. KUMAT 5E, TATUR 5E are AVBL if there is clearance to cross UNR1183, UNR1184 (during their activity) or by coordination with ATS unit. 4. If unable to comply with MNM climb gradients, the flight crews must inform ATS unit about it. 5. MNM climb gradients (required due to obstacles): <ul style="list-style-type: none"> - 6.0% up to FL110 for KUMAT 5E; - 7.1% up to FL120 for PILUG 5E; - 5.0% up to FL110 for TATUR 5E; - 5.0% up to FL100 for TEGMI 5E.
---	--

BEARINGS AND TRACKS ARE MAGNETIC
ALTITUDES, HEIGHTS AND ELEVATIONS ARE IN METRES
DISTANCES ARE IN KILOMETRES

Alt set: - QFE (QNH on req);
- mm (hPa on req).