

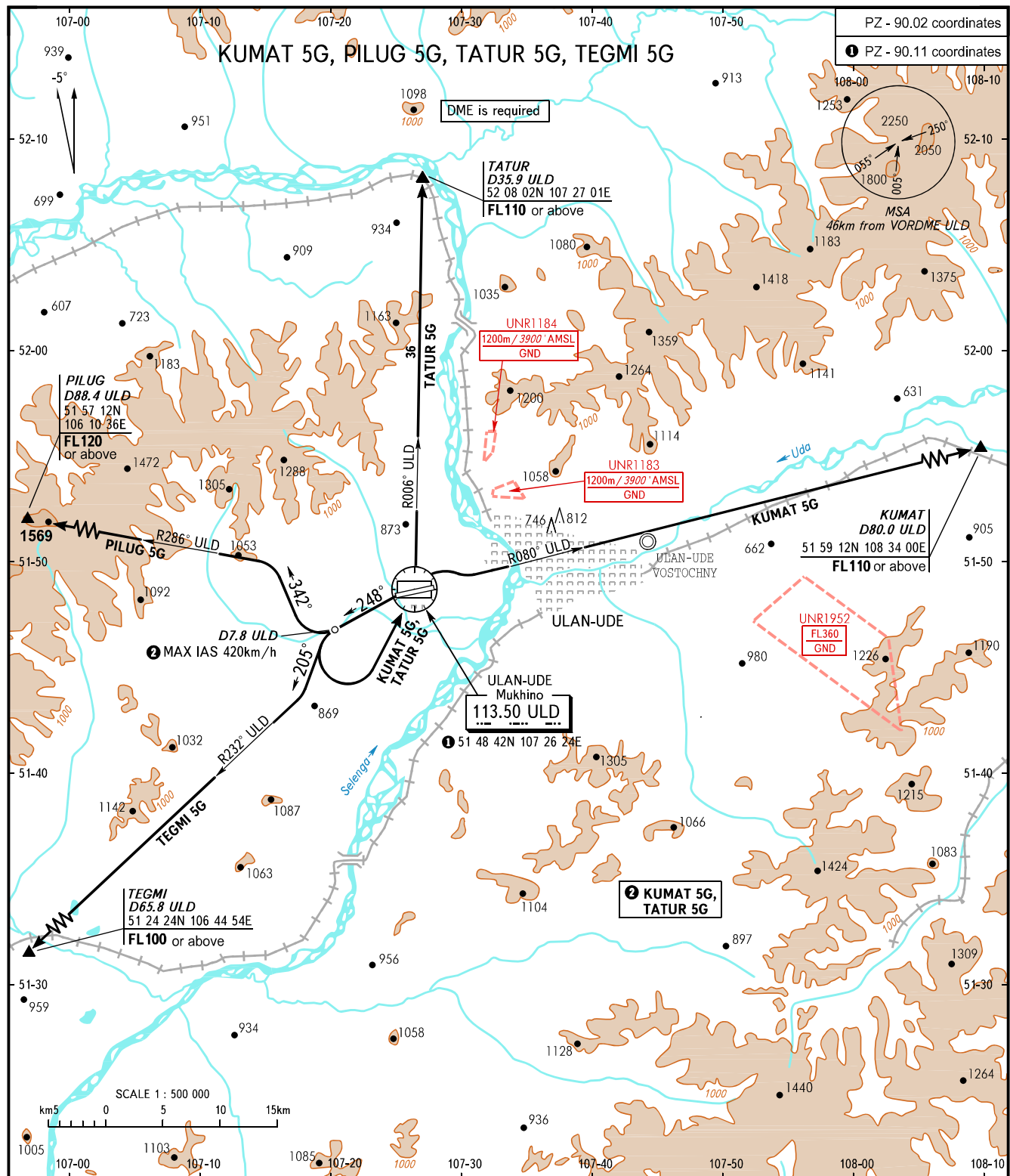
STANDARD DEPARTURE CHART  
INSTRUMENT (SID) - ICAO

TRANSITION  
HEIGHT : (1800)

ULAN-UDE, RUSSIA

MUKHINO

RWY 26



TOWER 118.100  
APPROACH 129.300

**WARNING:**

1. Take-off track is offset by 15° from RCL.
2. KUMAT 5G, TATUR 5G are AVBL if there is clearance to cross UNR1183, UNR1184 (during their activity) or by coordination with ATS unit.
3. If unable to comply with MNM climb gradients, the flight crews must inform ATS unit about it.
4. MNM climb gradients (required due to obstacles):
  - 5.0% up to FL110 for KUMAT 5G;
  - 7.1% up to FL120 for PILUG 5G;
  - 5.0% up to FL110 for TATUR 5G;
  - 5.0% up to FL100 for TEGMI 5G.

BEARINGS AND TRACKS ARE MAGNETIC  
ALTITUDES, HEIGHTS AND ELEVATIONS ARE IN METRES  
DISTANCES ARE IN KILOMETRES

Alt set: - QFE (QNH on req);  
- mm (hPa on req).