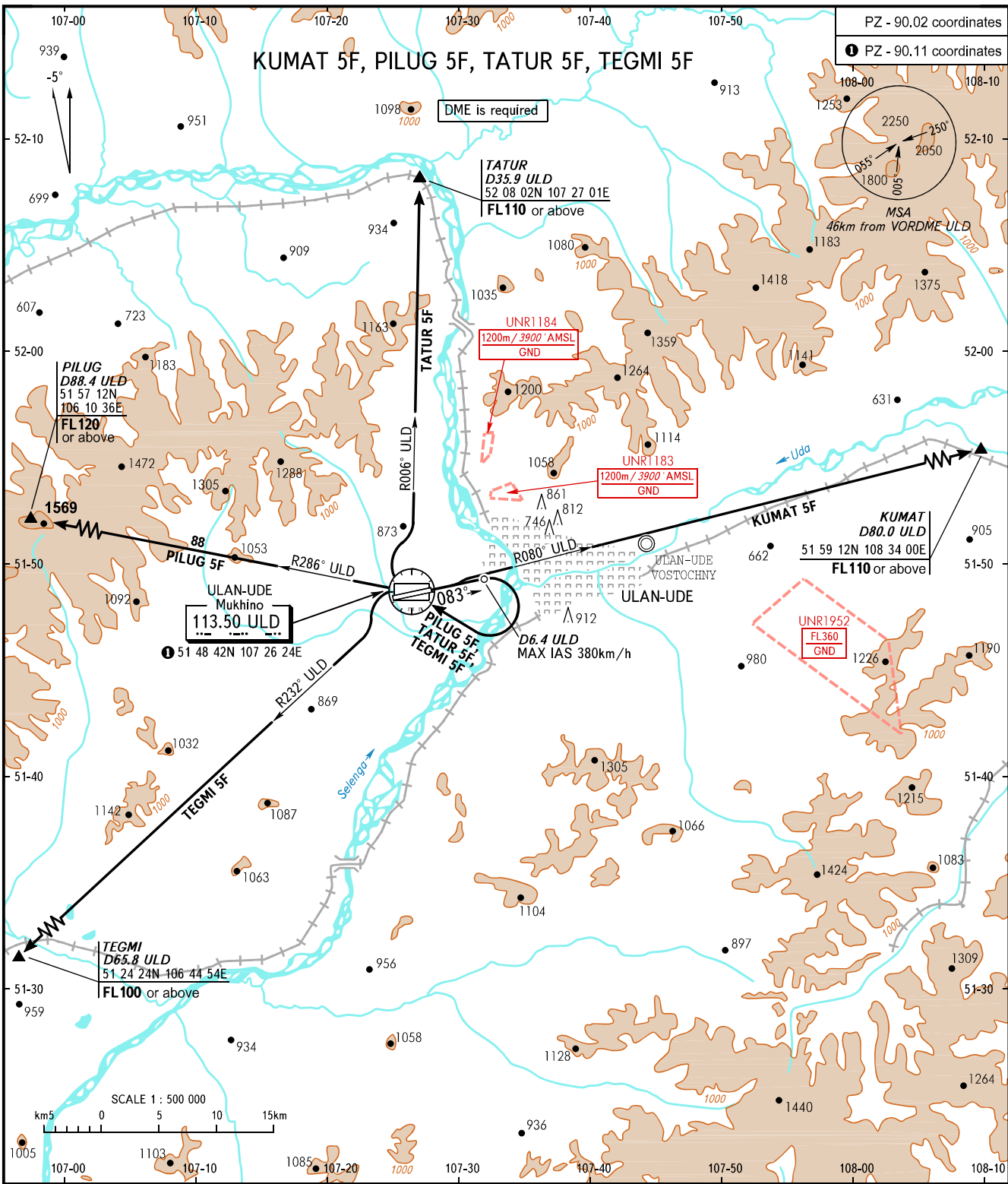


STANDARD DEPARTURE CHART
INSTRUMENT (SID) - ICAO

TRANSITION
HEIGHT : (1800)

ULAN-UDE, RUSSIA
MUKHINO
RWY 08



TOWER **118.100**
APPROACH **129.300**

- WARNING:**
- MNM climb gradients (required due to obstacles):
 - 3.8% up to (530) for KUMAT 5F;
 - 5.0% up to FL120 for PILUG 5F;
 - 5.0% up to (630) for TATUR 5F;
 - 5.0% up to (630) for TEGMI 5F .
 - MNM climb gradients (required due to the airspace structure):
 - 3.7% up to FL110 for KUMAT 5F;
 - 4.8% up to FL110 for TATUR 5F.

BEARINGS AND TRACKS ARE MAGNETIC
ALTITUDES, HEIGHTS AND ELEVATIONS ARE IN METRES
DISTANCES ARE IN KILOMETRES

Alt set: - QFE (QNH on req);
- mm (hPa on req).

CHANGE: Heading