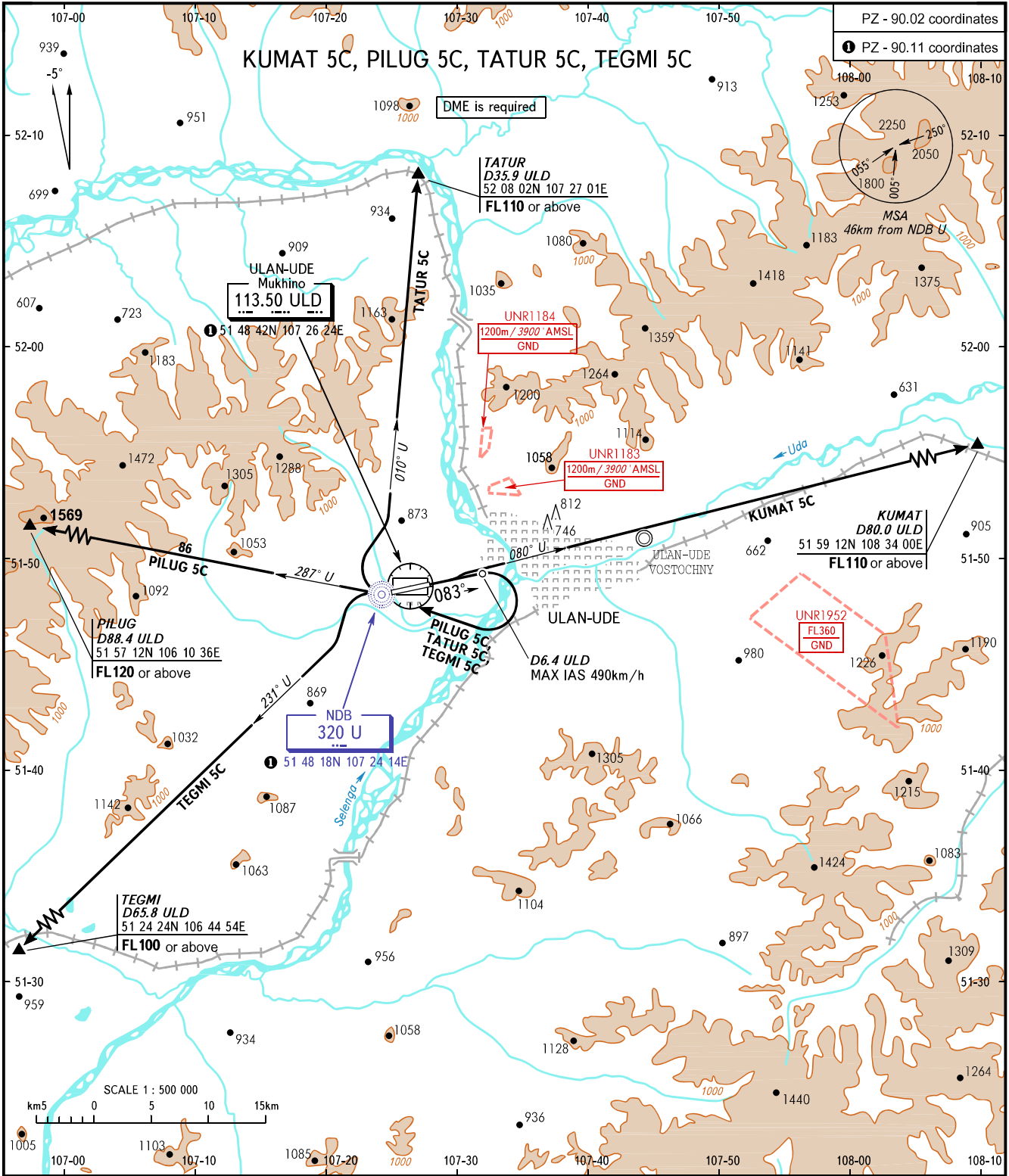


STANDARD DEPARTURE CHART
INSTRUMENT (SID) - ICAO

TRANSITION
HEIGHT : (1800)

ULAN-UDE, RUSSIA
MUKHINO
RWY 08



TOWER **118.100**
APPROACH **129.300**

- WARNING:**
- KUMAT 5C is AVBL if there is clearance to cross UNR1952 (during its activity) or by coordination with ATS unit.
 - MNM climb gradients (required due to obstacles):
 - 4.2% up to (581) for KUMAT 5C;
 - 5.3% up to FL120 for PILUG 5C;
 - 5.3% up to FL110 for TATUR 5C;
 - 5.3% up to (1139) for TEGMI 5C.
 - MNM climb gradients (required due to the airspace structure):
 - 3.7% up to FL110 for KUMAT 5C.

BEARINGS AND TRACKS ARE MAGNETIC
ALTITUDES, HEIGHTS AND ELEVATIONS ARE IN METRES
DISTANCES ARE IN KILOMETRES

Alt set: - QFE (QNH on req);
- mm (hPa on req).

CHANGE: Heading