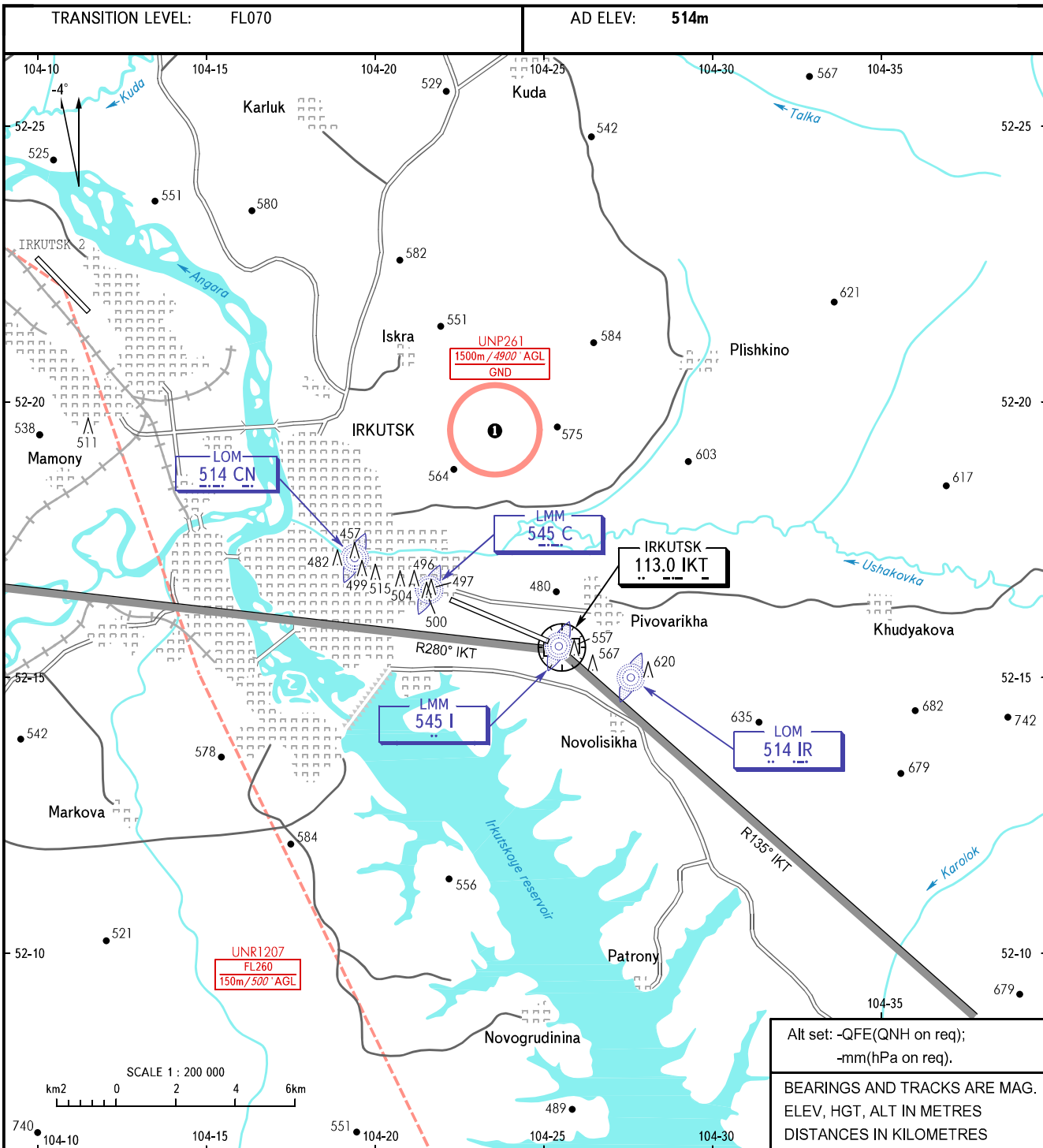


VISUAL  
APPROACH  
CHART - ICAO

RADAR	119.300
TOWER	118.100

IRKUTSK, RUSSIA  
IRKUTSK  
RWY 12/30



When UNR1207 is active, the chart shall be used by  
ATS unit coordination with Irkutsk Aviation Plant.  
ACFT carrying out VFR flights must have MAX IAS  
not more than 450km/h below FL070.

① ACFT flights to/from  
Irkutsk AD are approved.

- VISUAL APPROACH PROCEDURES:
- The conditions of the visual approach are as follows:
    - a decision to carry out a visual approach shall be taken by a pilot-in-command and coordinated with ATS unit;
    - the pilot-in-command has a visual contact with the runway and/or its references;
    - the pilot-in-command shall report that meteorological conditions allow to carry out visual approach and landing.
  - A visual control of glide path indication by using PAPI 3°20' is AVBL.
  - When a visual contact with the runway and its references is lost the pilot-in-command must carry out a flight at the minimum safe height under IFR to LMM of the runway-in-use and execute the established instrument approach procedure climbing to (900).
  - Visual manoeuvring to the south of limiting radials from DVORDME R135°, R280° is prohibited.

CHANGE: New chart