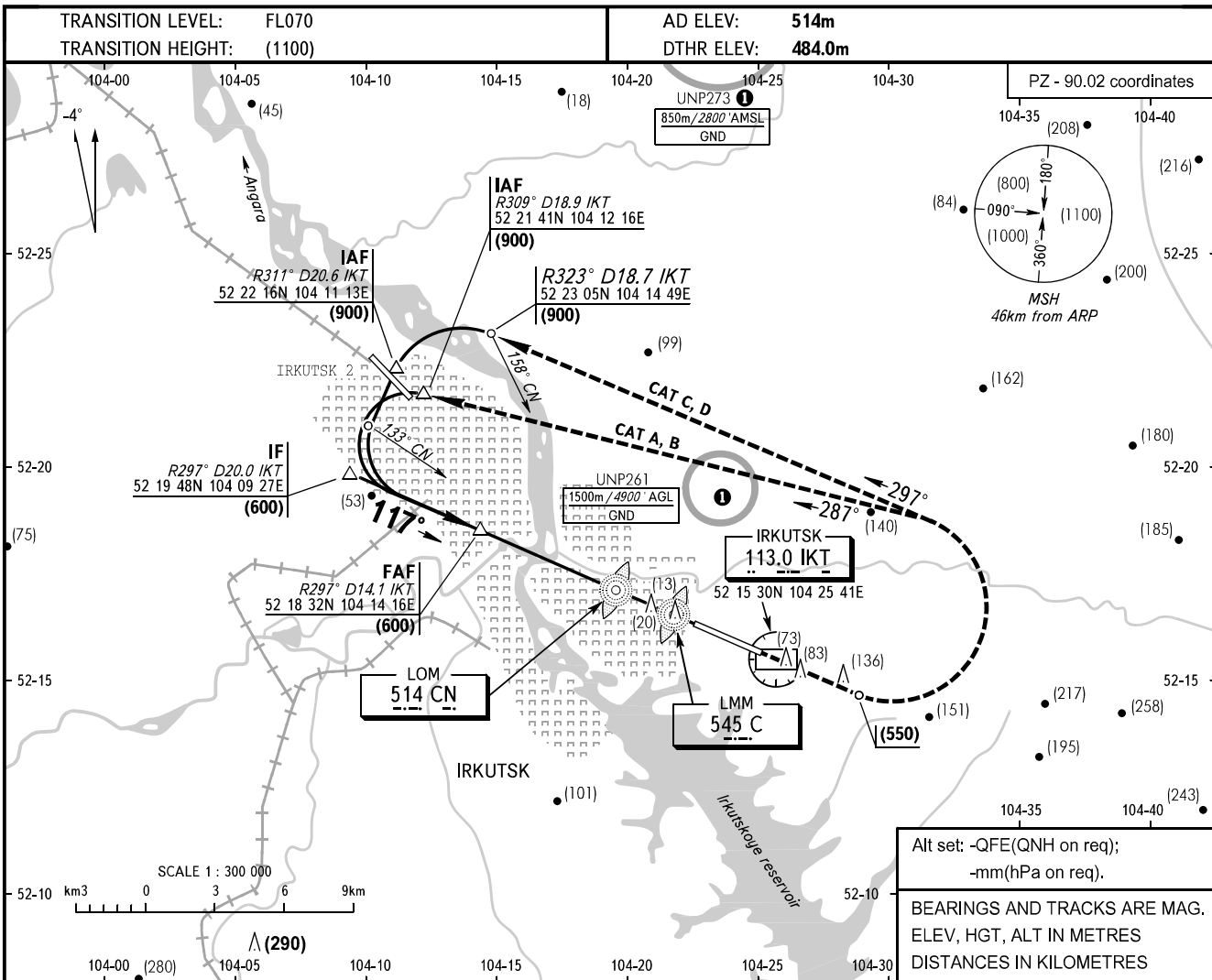


**INSTRUMENT  
APPROACH  
CHART - ICAO**

RADAR	119.300
TOWER	118.100

**IRKUTSK, RUSSIA**  
IRKUTSK  
2 NDB, NDB RWY 12

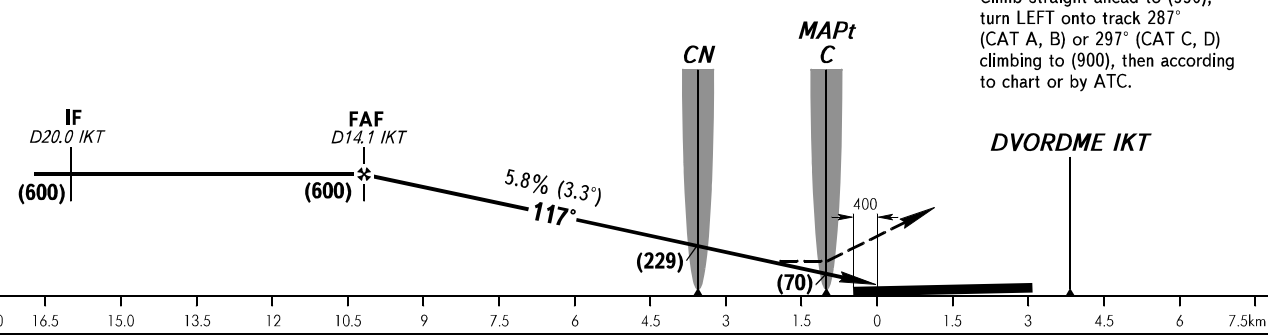


Alt set: -QFE(QNH on req);  
-mm(hPa on req).

BEARINGS AND TRACKS ARE MAG.  
ELEV, HGT, ALT IN METRES  
DISTANCES IN KILOMETRES

FAF fixed by TAR (DIST 11.6)

**MISSED APPROACH**  
Climb straight ahead to (550),  
turn LEFT onto track 287°  
(CAT A, B) or 297° (CAT C, D)  
climbing to (900), then according  
to chart or by ATC.



OCA(H)		A	B	C	D								
Straight-in Approach	2 NDB	With FAF	610(125)	610(125)	610(125)	610(125)							
		WO FAF	740(255)	740(255)	740(255)	740(255)							
	NDB (LOM)	With FAF	620(135)	620(135)	620(135)	620(135)							
Circling		740(225)	740(225)	770(255)	855(340)								
GROUND SPEED		km/h	150	180	210	240	270	300	330	360	390	420	450
RATE OF DESCENT		m/s	2.4	2.9	3.4	3.9	4.4	4.8	5.3	5.8	6.3	6.8	7.3

① ACFT flights to/from  
IRKUTSK AD are approved.

CHANGE: New chart