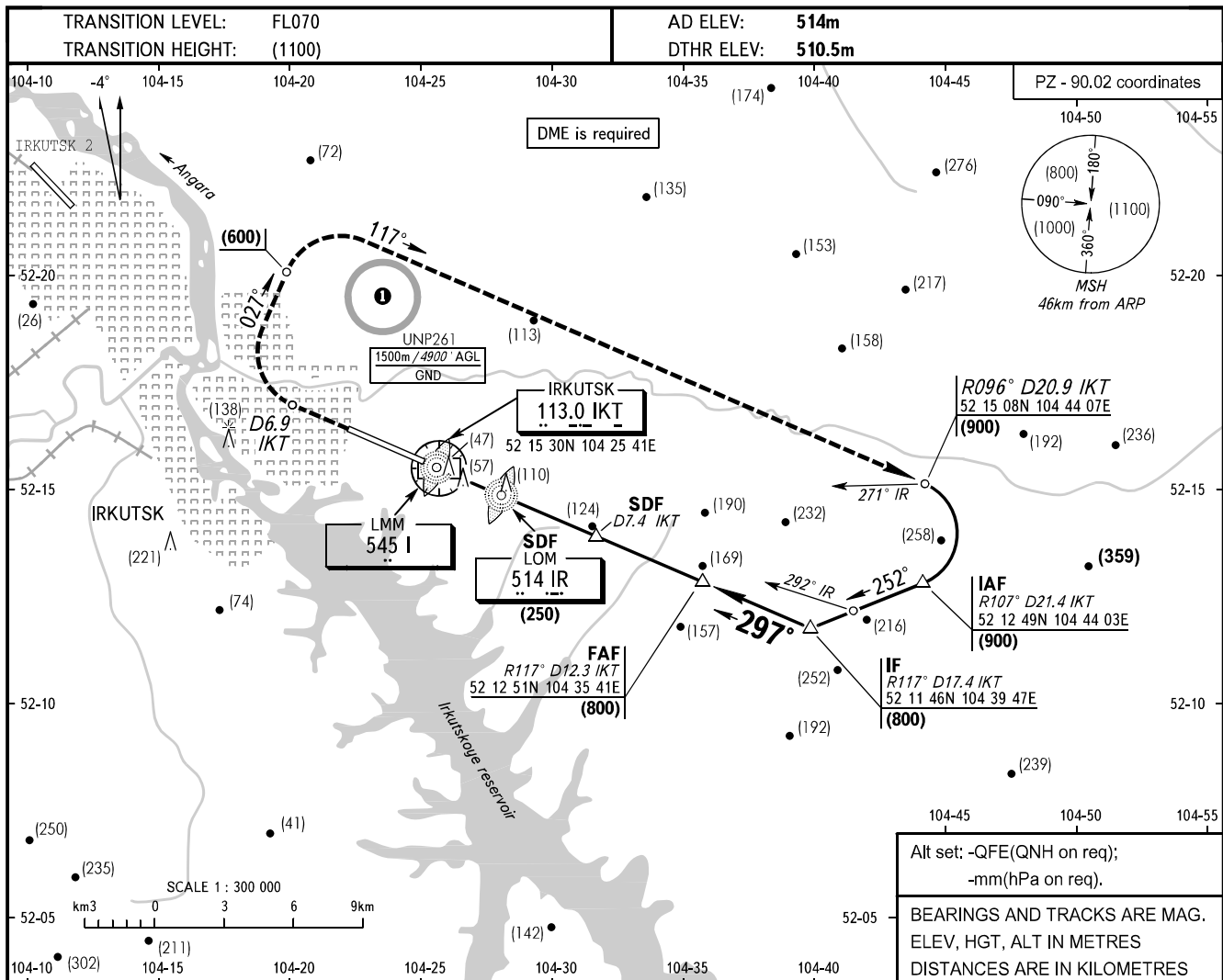


INSTRUMENT
APPROACH
CHART - ICAO

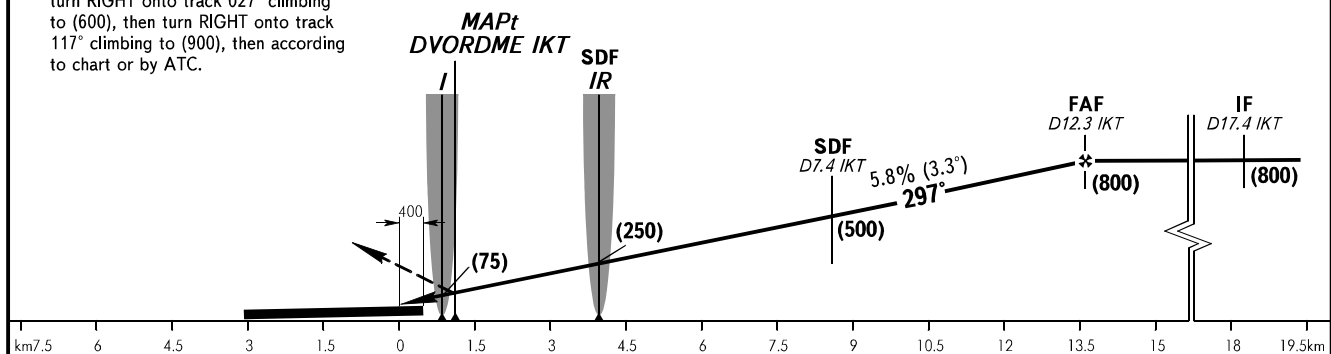
APPROACH	125.200
RADAR	119.300
TOWER	118.100

IRKUTSK, RUSSIA
IRKUTSK
DVOR RWY 30



MISSED APPROACH

Climb straight ahead to D6.9 IKT, turn RIGHT onto track 027° climbing to (600), then turn RIGHT onto track 117° climbing to (900), then according to chart or by ATC.



OCA(H)		A	B	C	D								
Straight-in Approach	With SDF	645(135)	645(135)	645(135)	645(135)								
	WO SDF	710(200)	710(200)	710(200)	710(200)								
Circling		710(200)	710(200)	770(255)	855(340)								
GROUND SPEED		km/h	150	180	210	240	270	300	330	360	390	420	450
RATE OF DESCENT		m/s	2.4	2.9	3.4	3.9	4.4	4.9	5.3	5.8	6.3	6.8	7.3

WARNING
MAPt at DVORDME IKT.
Timing not authorized for defining MAPt.

ACFT flights to/from Irkutsk AD are approved.

CHANGE: New chart