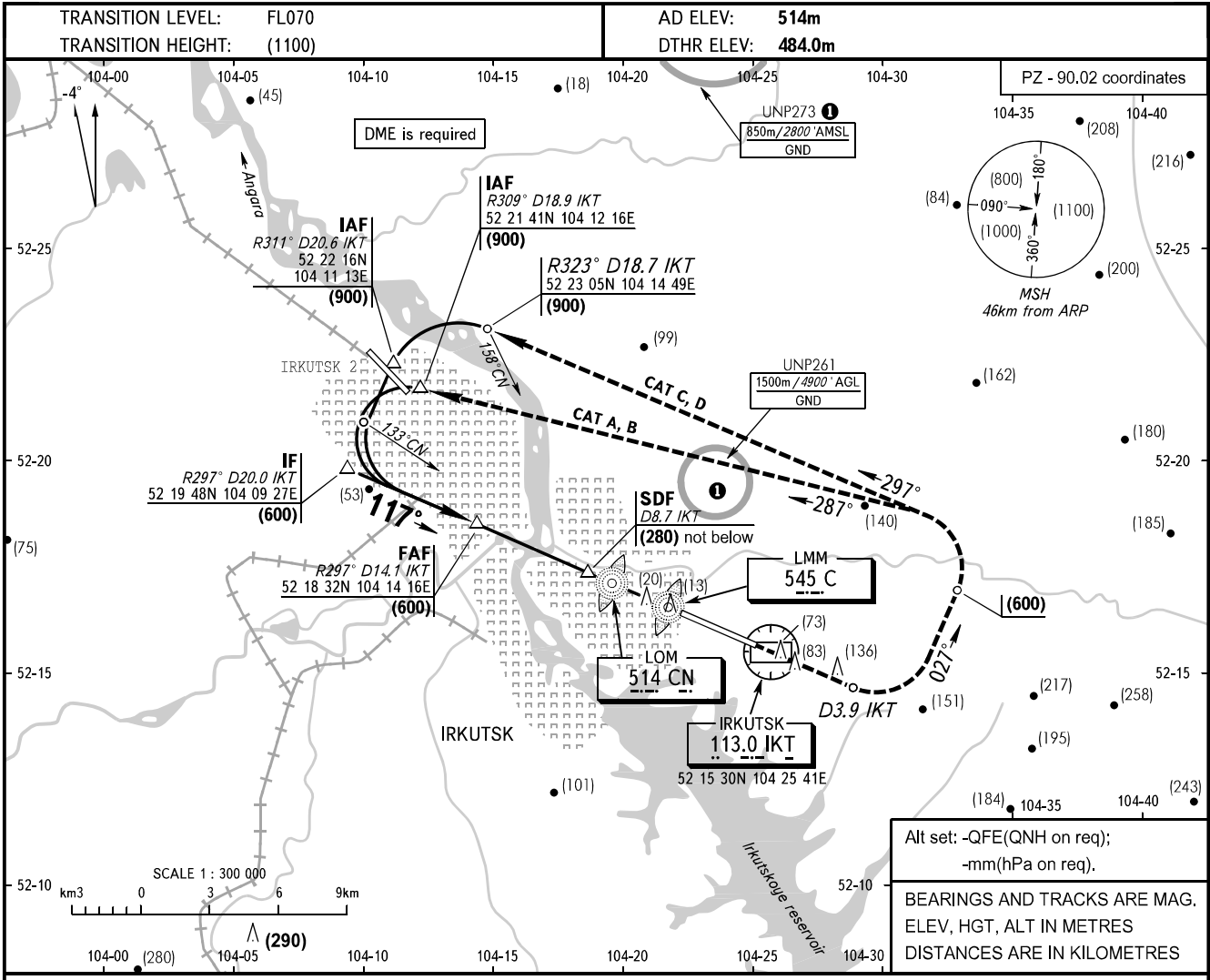


**INSTRUMENT  
APPROACH  
CHART - ICAO**

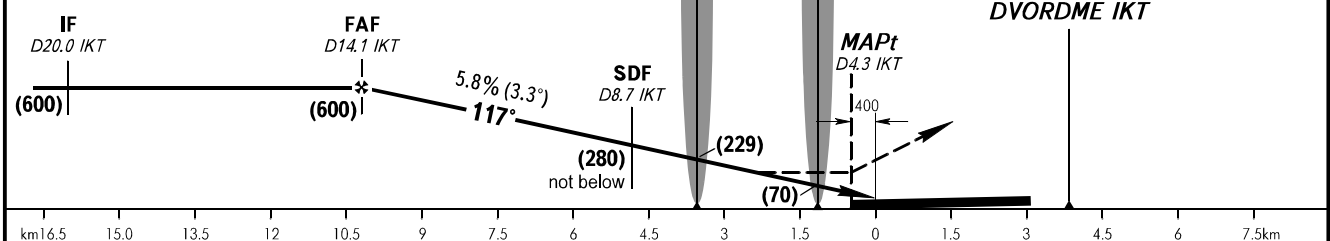
**IRKUTSK, RUSSIA  
IRKUTSK  
DVOR RWY 12**

RADAR **119.300**  
TOWER **118.100**



Alt set: -QFE(QNH on req);  
-mm(hPa on req).  
BEARINGS AND TRACKS ARE MAG.  
ELEV, HGT, ALT IN METRES  
DISTANCES ARE IN KILOMETRES

**MISSED APPROACH**  
Climb straight ahead to D3.9 IKT, turn LEFT onto track 027° climbing to (600), then turn LEFT onto track 287° (CAT A, B) or 297° (CAT C, D) climbing to (900), then according to chart or by ATC.



OCA(H)	A	B	C	D
Straight-in	695(210)	695(210)	695(210)	695(210)
Approach				
Circling	695(180)	710(200)	770(255)	855(340)

**WARNING**  
MAPt is THR RWY 12/D4.3 IKT. Timing not authorized for defining MAPt.  
① ACFT flights to/from IRKUTSK AD are approved.

GROUND SPEED	km/h	150	180	210	240	270	300	330	360	390	420	450
RATE OF DESCENT	m/s	2.4	2.9	3.4	3.9	4.4	4.9	5.3	5.8	6.3	6.8	7.3

CHANGE: New chart