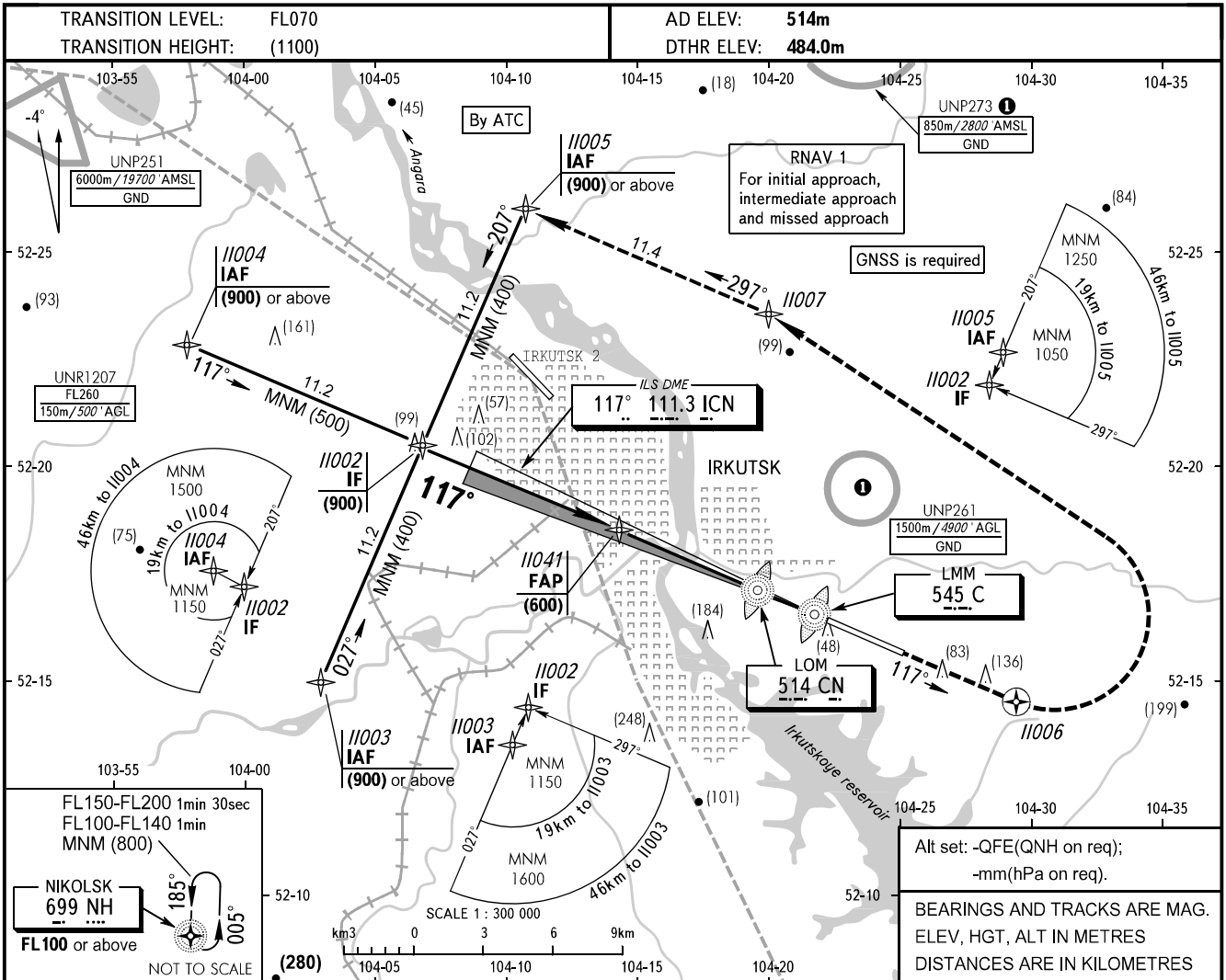


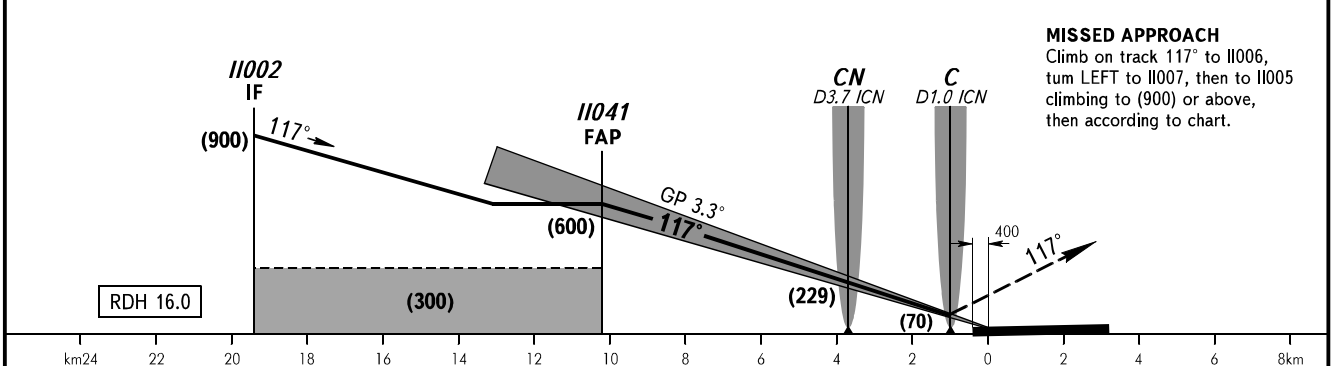
**INSTRUMENT  
APPROACH  
CHART - ICAO**

**IRKUTSK, RUSSIA  
IRKUTSK  
ILS Z CAT I RWY 12**

RADAR 119.300  
TOWER 118.100



DME ICN	10.0	8.0	6.0	4.0	2.0
HEIGHT	(595)	(475)	(360)	(245)	(130)



**MISSED APPROACH**  
Climb on track 117° to 11006, turn LEFT to 11007, then to 11005 climbing to (900) or above, then according to chart.

OCA(H)		A	B	C	D	<b>WARNING</b> Zero range of DME ICN is indicated at RWY 12 DTHR.									
Straight-in Approach	CAT I	533(49)	536(52)	540(56)	545(61)	① ACFT flights to/from IRKUTSK AD are approved.									
	Circling	660(145)	710(200)	770(255)	855(340)										
GROUND SPEED		km/h	150	180	210	240	270	300	330	360	390	420	450		
RATE OF DESCENT		m/s	2.4	2.9	3.4	3.9	4.4	4.8	5.3	5.8	6.3	6.8	7.3		

CHANGE: New chart