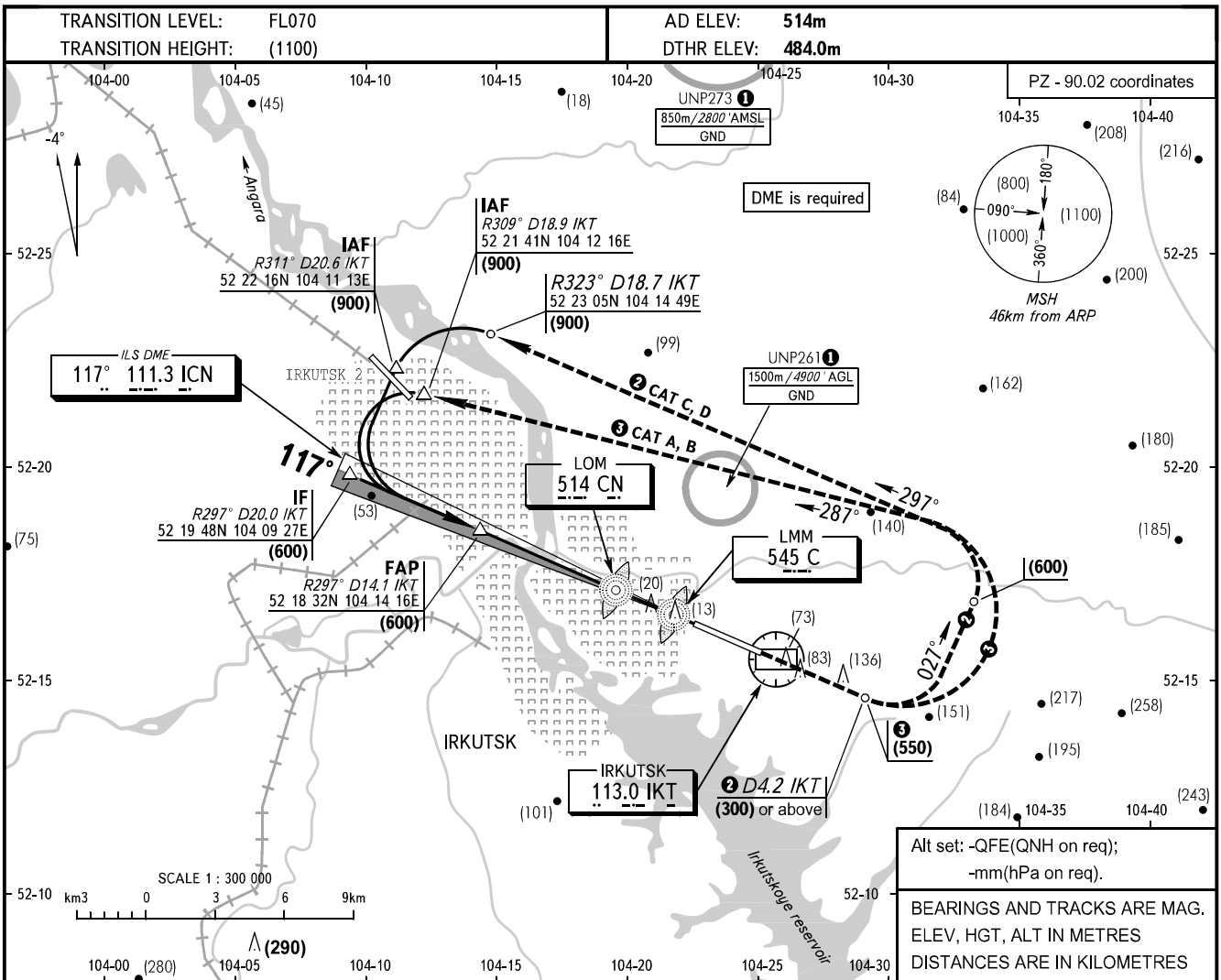


**INSTRUMENT
APPROACH
CHART - ICAO**

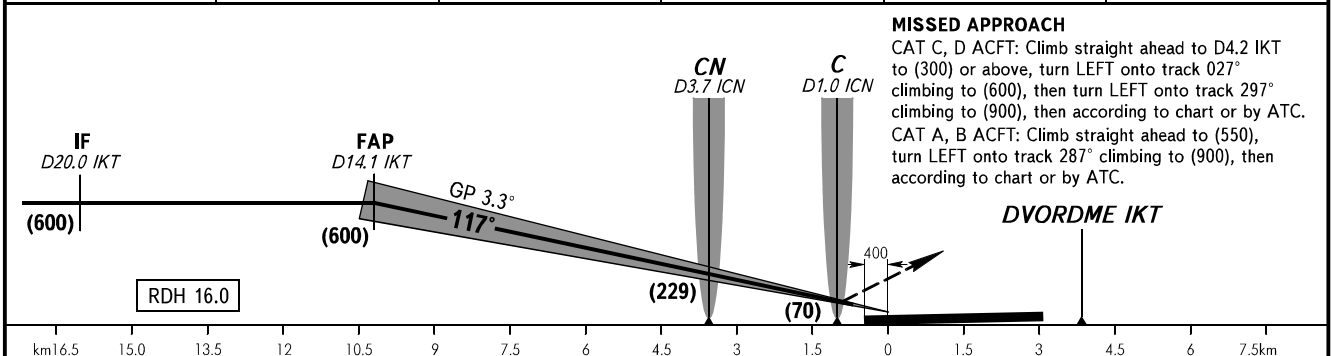
**IRKUTSK, RUSSIA
IRKUTSK
ILS CAT I RWY 12**

RADAR **119.300**
TOWER **118.100**



Alt set: -QFE(QNH on req);
-mm(hPa on req).
BEARINGS AND TRACKS ARE MAG.
ELEV, HGT, ALT IN METRES
DISTANCES ARE IN KILOMETRES

DME ICN	10.0	8.0	6.0	4.0	2.0
HEIGHT	(595)	(475)	(360)	(245)	(130)



MISSED APPROACH
CAT C, D ACFT: Climb straight ahead to D4.2 IKT to (300) or above, turn LEFT onto track 027° climbing to (600), then turn LEFT onto track 297° climbing to (900), then according to chart or by ATC.
CAT A, B ACFT: Climb straight ahead to (550), turn LEFT onto track 287° climbing to (900), then according to chart or by ATC.

OCA(H)		A	B	C	D
Straight-in	CAT I	533(49)	536(52)	540(56)	545(61)
	Approach				
Circling		660(145)	710(200)	770(255)	855(340)

WARNING
Zero range of DME ICN is indicated at RWY 12 DTHR.
① ACFT flights to/from IRKUTSK AD are approved.

GROUND SPEED	km/h	150	180	210	240	270	300	330	360	390	420	450
RATE OF DESCENT	m/s	2.4	2.9	3.4	3.9	4.4	4.9	5.3	5.8	6.3	6.8	7.3

CHANGE: New chart