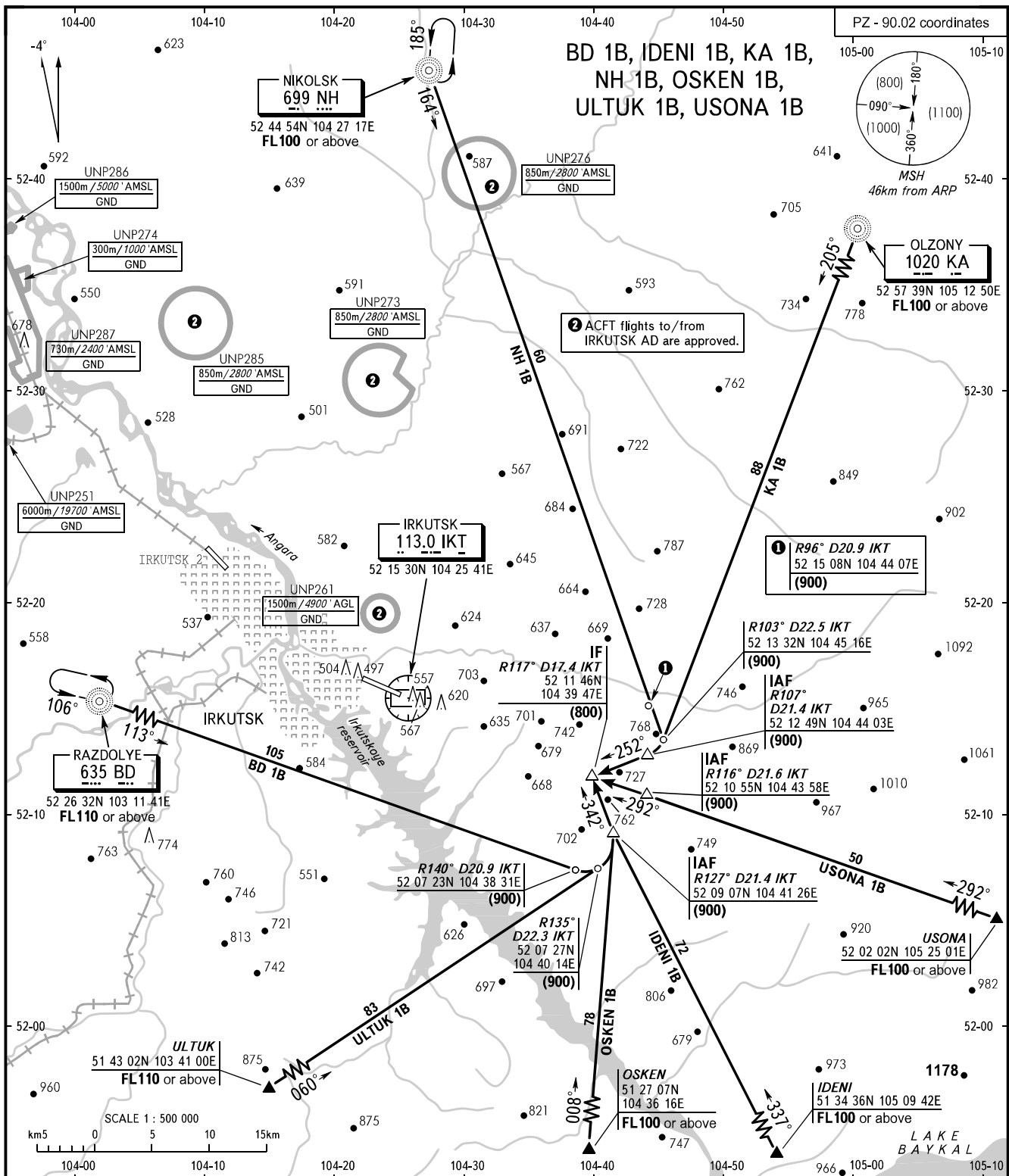


STANDARD ARRIVAL CHART
INSTRUMENT (STAR) ICAO

TRANSITION
LEVEL: FL070

IRKUTSK, RUSSIA
IRKUTSK
RWY 30



APPROACH **125.200**
RADAR **119.300**
TOWER **118.100**

BEARINGS AND TRACKS ARE MAGNETIC
ALTITUDES, HEIGHTS AND ELEVATIONS IN METRES
DISTANCES IN KILOMETRES

Alt set: -QFE(QNH on req);
-mm(hPa on req).