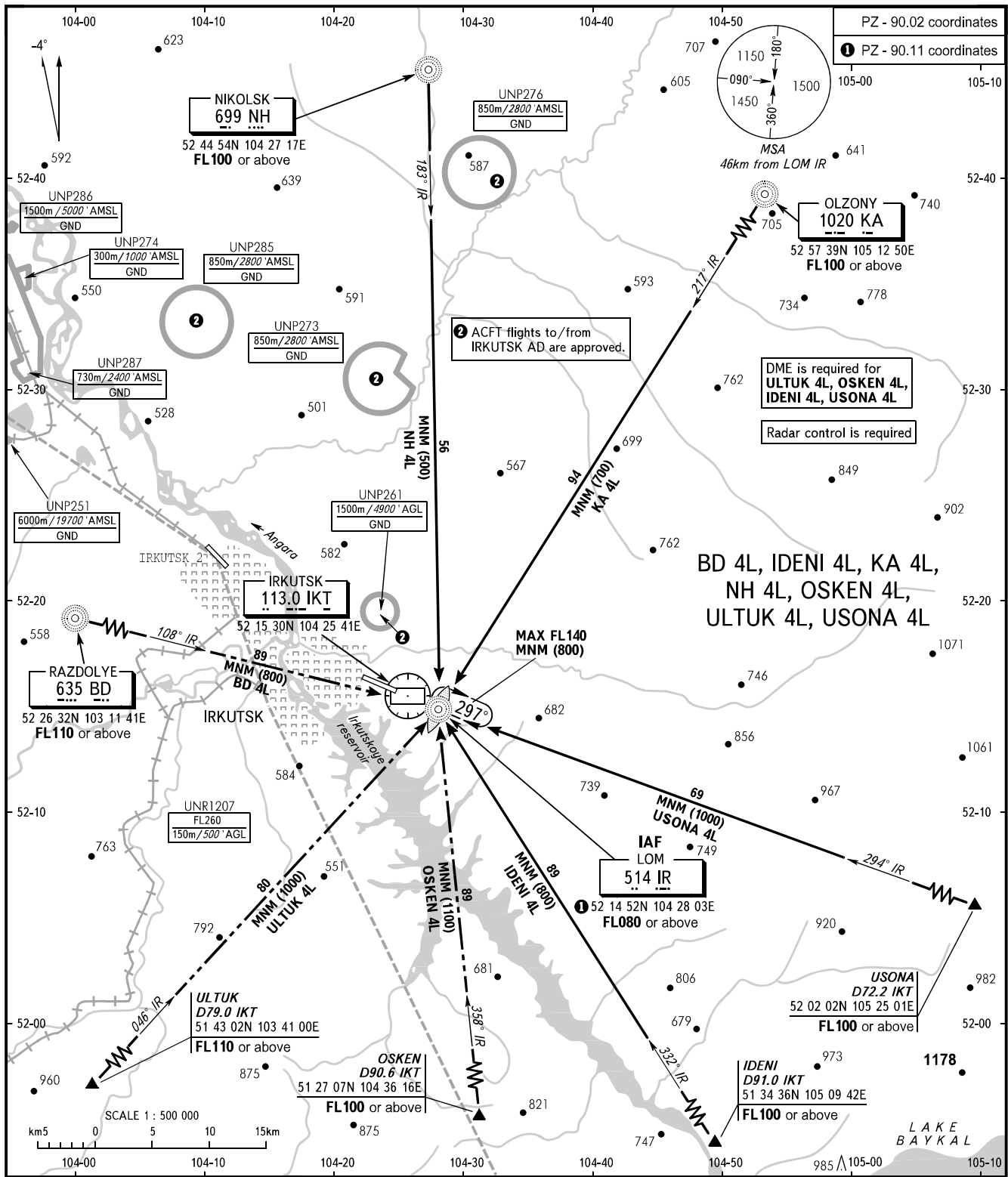


STANDARD ARRIVAL CHART
INSTRUMENT (STAR) ICAO

IRKUTSK, RUSSIA
IRKUTSK
RWY 30

TRANSITION
LEVEL: FL070



PZ - 90.02 coordinates
PZ - 90.11 coordinates

DME is required for
ULTUK 4L, OSKEN 4L,
IDENI 4L, USONA 4L
Radar control is required

BD 4L, IDENI 4L, KA 4L,
NH 4L, OSKEN 4L,
ULTUK 4L, USONA 4L

ACFT flights to/from
IRKUTSK AD are approved.

APPROACH 125.200
RADAR 119.300
TOWER 118.100

WARNING:
1. When restricted area UNR1207 is active,
BD 4L, OSKEN 4L, ULTUK 4L are
available by coordination with ATC.
2. When UNP251 is active STAR BD 4L
by ATC.

BEARINGS AND TRACKS ARE MAGNETIC
ALTITUDES, HEIGHTS AND ELEVATIONS IN METRES
DISTANCES IN KILOMETRES

Alt set: -QFE(QNH on req);
-mm(hPa on req).