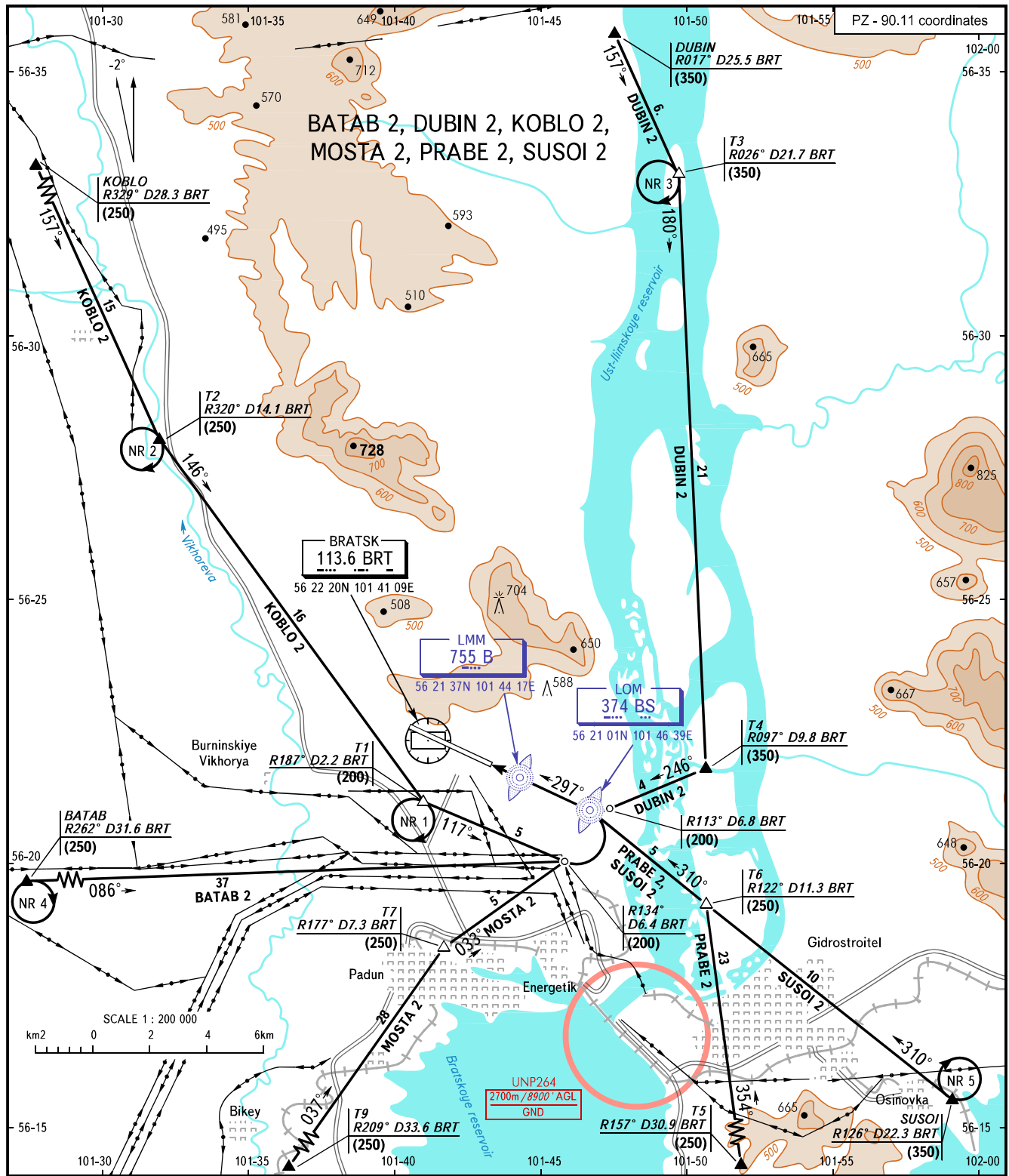


VFR
ARRIVAL
CHART

BRATSK, RUSSIA
BRATSK
RWY 30

TRANSITION
LEVEL: 1



<p>APPROACH TOWER 118.100 121.800</p>	<p>MISSED APPROACH Climb to (100), turn LEFT onto track 117° climbing to (200), then according to chart.</p> <p>1 TRANSITION LEVEL:</p> <ul style="list-style-type: none"> - FL060 when QFE is 715mm mercury column or above; - FL070 when QFE is 688mm mercury column or above, but less than 715mm mercury column; - FL080 when QFE is less than 688mm mercury column. 	<p>Holding area T1 (NR 1): Height (200). Right turns, speed 150km/h, bank 15°.</p> <p>Holding area T2 (NR 2): Height (250). Right turns, speed 150km/h, bank 15°.</p> <p>Holding area T3 (NR 3): Height (350). Right turns, speed 150km/h, bank 15°.</p> <p>Holding area BATAB (NR 4): Height (250). Right turns, speed 150km/h, bank 15°.</p> <p>Holding area SUSOI (NR 5): Height (350). Right turns, speed 150km/h, bank 15°.</p>
--	---	--

<p>BEARINGS AND TRACKS ARE MAGNETIC ALTITUDES, HEIGHTS AND ELEVATIONS IN METRES DISTANCES IN KILOMETRES</p>	<p>Alt set: -QFE(QNH on req); -mm(hPa on req).</p>	<p>CHANGE: New chart</p>
---	--	--------------------------