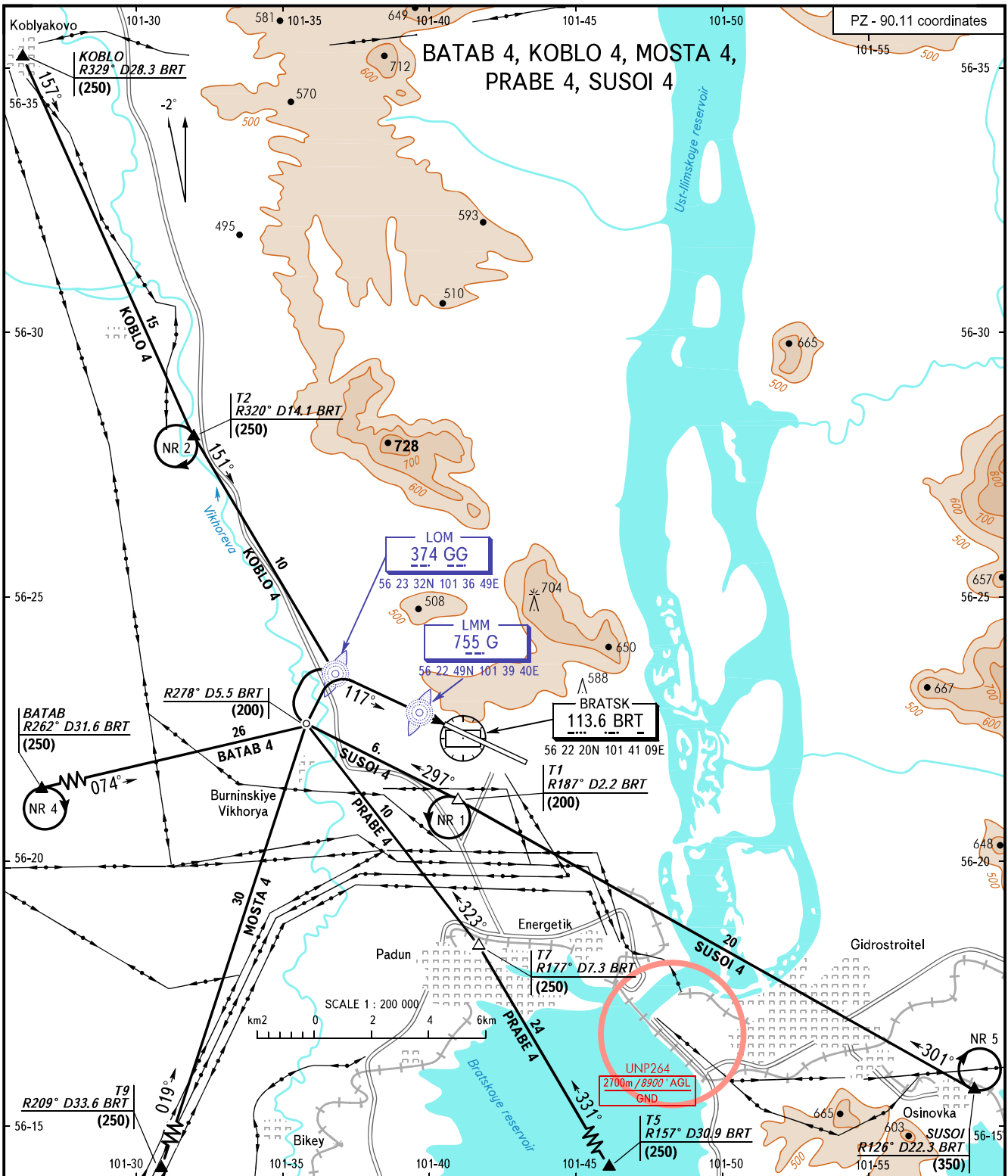


VFR
ARRIVAL
CHART

BRATSK, RUSSIA
BRATSK
RWY 12



APPROACH TOWER 118.100 / 121.800

MISSED APPROACH
Climb to (100), turn RIGHT onto track 297° climbing to (200), then according to chart.

TRANSITION LEVEL:

- FL060 when QFE is 715mm mercury column or above;
- FL070 when QFE is 688mm mercury column or above, but less than 715mm mercury column;
- FL080 when QFE is less than 688mm mercury column.

Holding area T1 (NR 1): Height (200).
Left turns, speed 150km/h, bank 15°.
Holding area T2 (NR 2): Height (250).
Right turns, speed 150km/h, bank 15°.
Holding area BATAB (NR 4): Height (250).
Right turns, speed 150km/h, bank 15°.
Holding area SUSOI (NR 5): Height (350).
Right turns, speed 150km/h, bank 15°.

BEARINGS AND TRACKS ARE MAGNETIC
ALTITUDES, HEIGHTS AND ELEVATIONS IN METRES
DISTANCES IN KILOMETRES

Alt set: -QFE(QNH on req);
-mm(hPa on req).

CHANGE: New chart