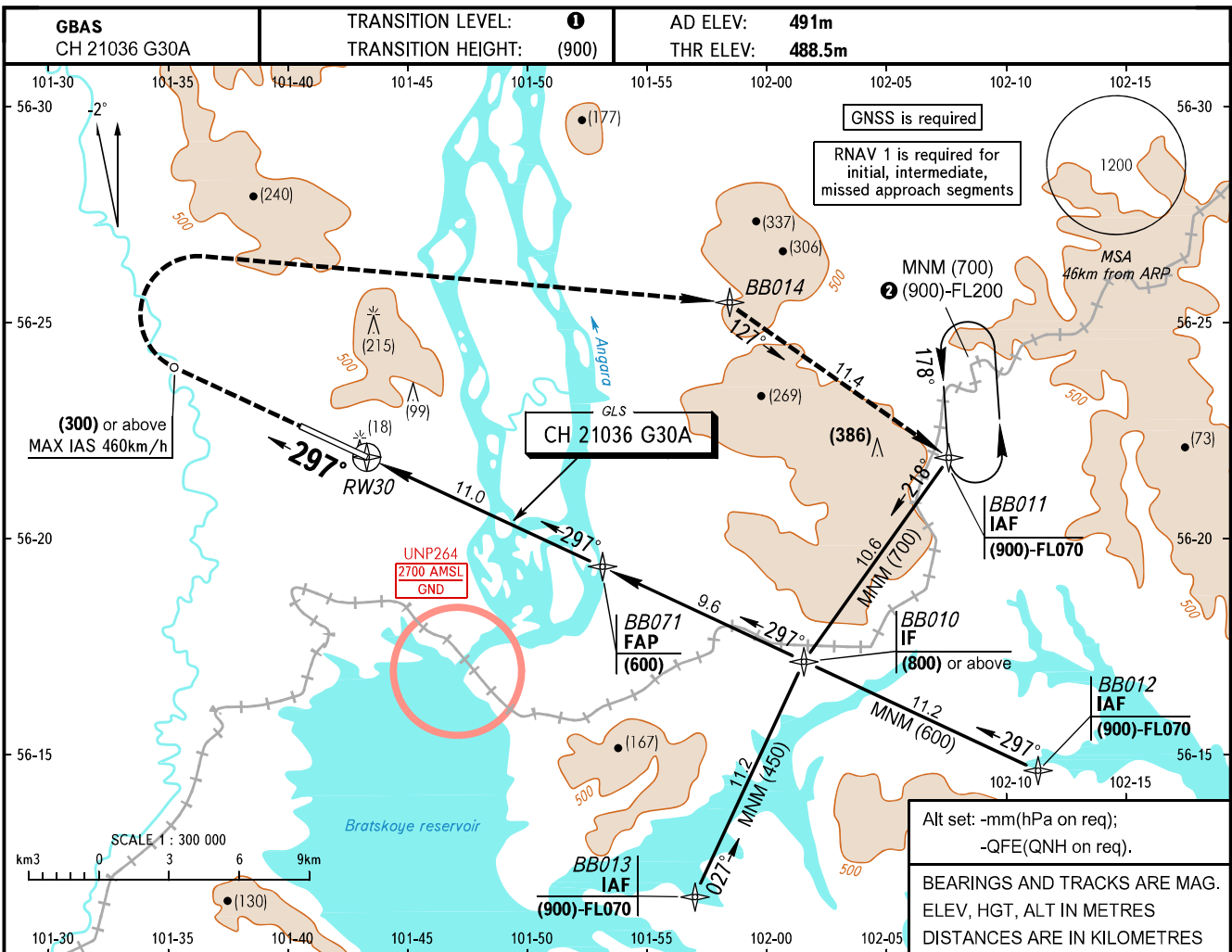


INSTRUMENT  
APPROACH  
CHART - ICAO

APPROACH	118.100
TOWER	121.800

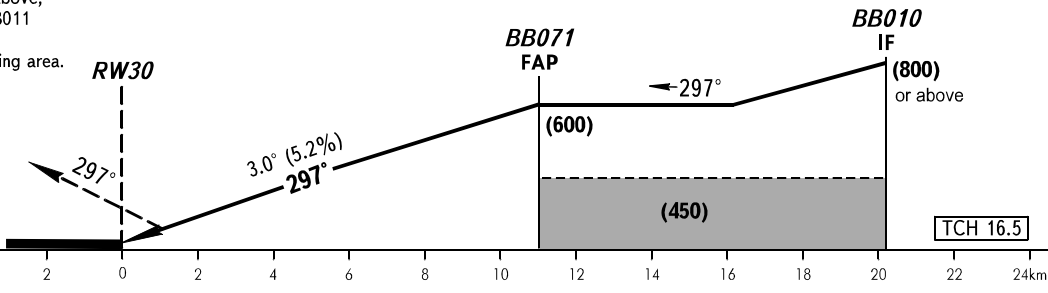
BRATSK, RUSSIA  
BRATSK  
GLS RWY 30 CAT I



Alt set: -mm(hPa on req);  
-QFE(QNH on req).  
BEARINGS AND TRACKS ARE MAG.  
ELEV, HGT, ALT IN METRES  
DISTANCES ARE IN KILOMETRES

DIST to RWY30	2.0	4.0	6.0	8.0	10.0	11.0
HGT 3.0° APCH	(120)	(225)	(330)	(435)	(535)	(600)

**MISSED APPROACH**  
Climb on track 297° to (300) or above,  
turn RIGHT to BB014, then to BB011  
climbing to (900) or above, then  
according to chart or to the holding area.



OCA(H)		A	B	C	D
Straight-in Approach	<b>CAT I</b>	532(44)	535(47)	539(51)	544(56)
Circling (MAX IAS 335km/h)		680(190)	795(305)	825(335)	825(335)

- 1** TRANSITION LEVEL:
  - FL060 when QFE is 715mm mercury column or above;
  - FL070 when QFE is 688mm mercury column or above but less than 715mm mercury column;
  - FL080 when QFE is less than 688mm mercury column.
- 2** (900)-FL090  
MAX IAS 430km/h

GROUND SPEED	km/h	150	180	210	240	270	300	330	360	390
RATE OF DESCENT	m/s	2.2	2.6	3.0	3.5	3.9	4.3	4.8	5.2	5.6