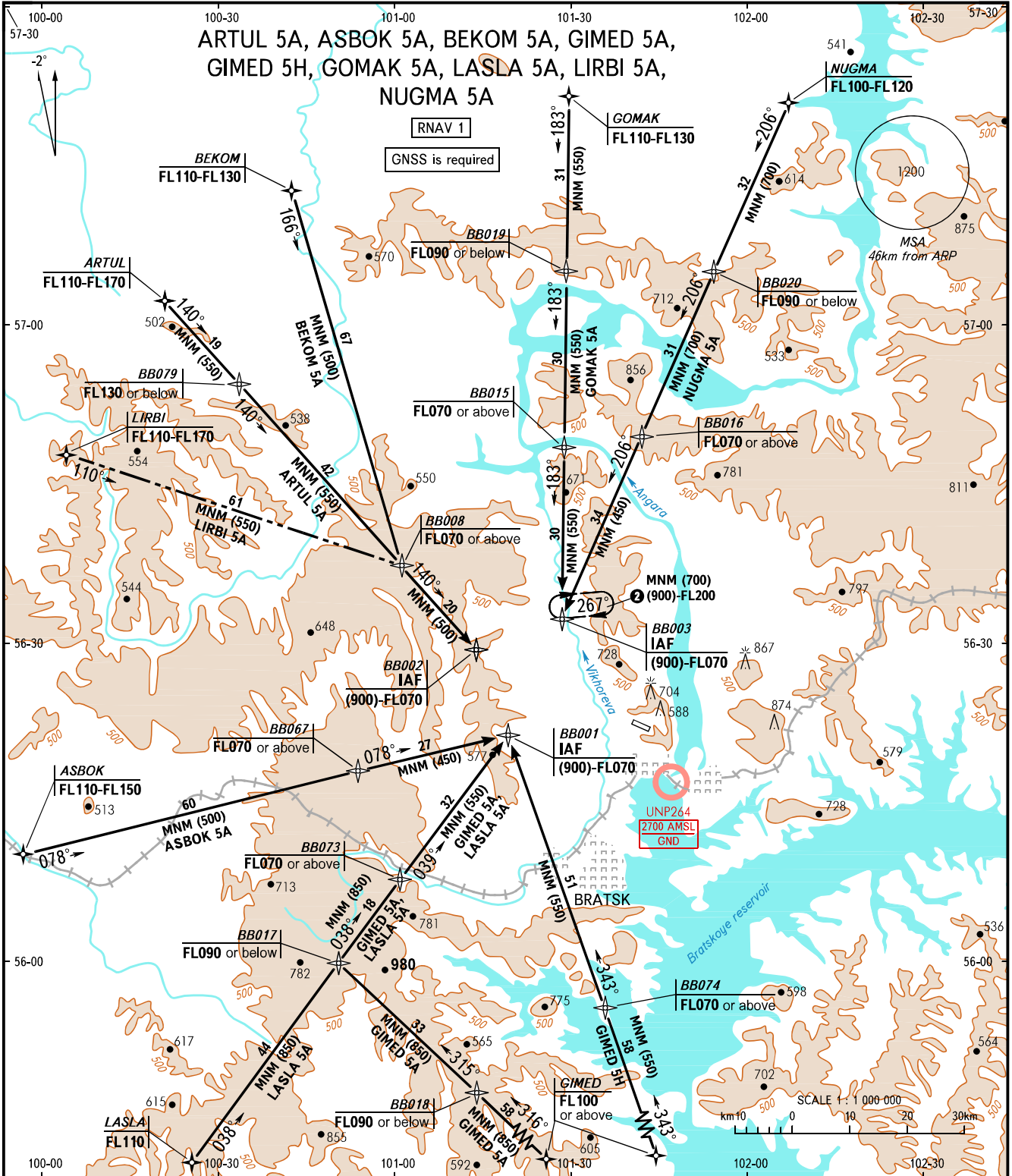


STANDARD ARRIVAL CHART
INSTRUMENT (STAR) - ICAO

BRATSK, RUSSIA
BRATSK
RNAV (GNSS) RWY 12

TRANSITION
LEVEL: **1**



APPROACH 118.100
TOWER 121.800

- 1** TRANSITION LEVEL:
 - FLO60 when QFE is 715mm mercury column or above;
 - FLO70 when QFE is 688mm mercury column or above but less than 715mm mercury column;
 - FLO80 when QFE is less than 688mm mercury column.

2 (900)-FLO90
MAX IAS 500km/h

BEARINGS AND TRACKS ARE MAGNETIC
 ALTITUDES, HEIGHTS AND ELEVATIONS ARE IN METRES
 DISTANCES ARE IN KILOMETRES