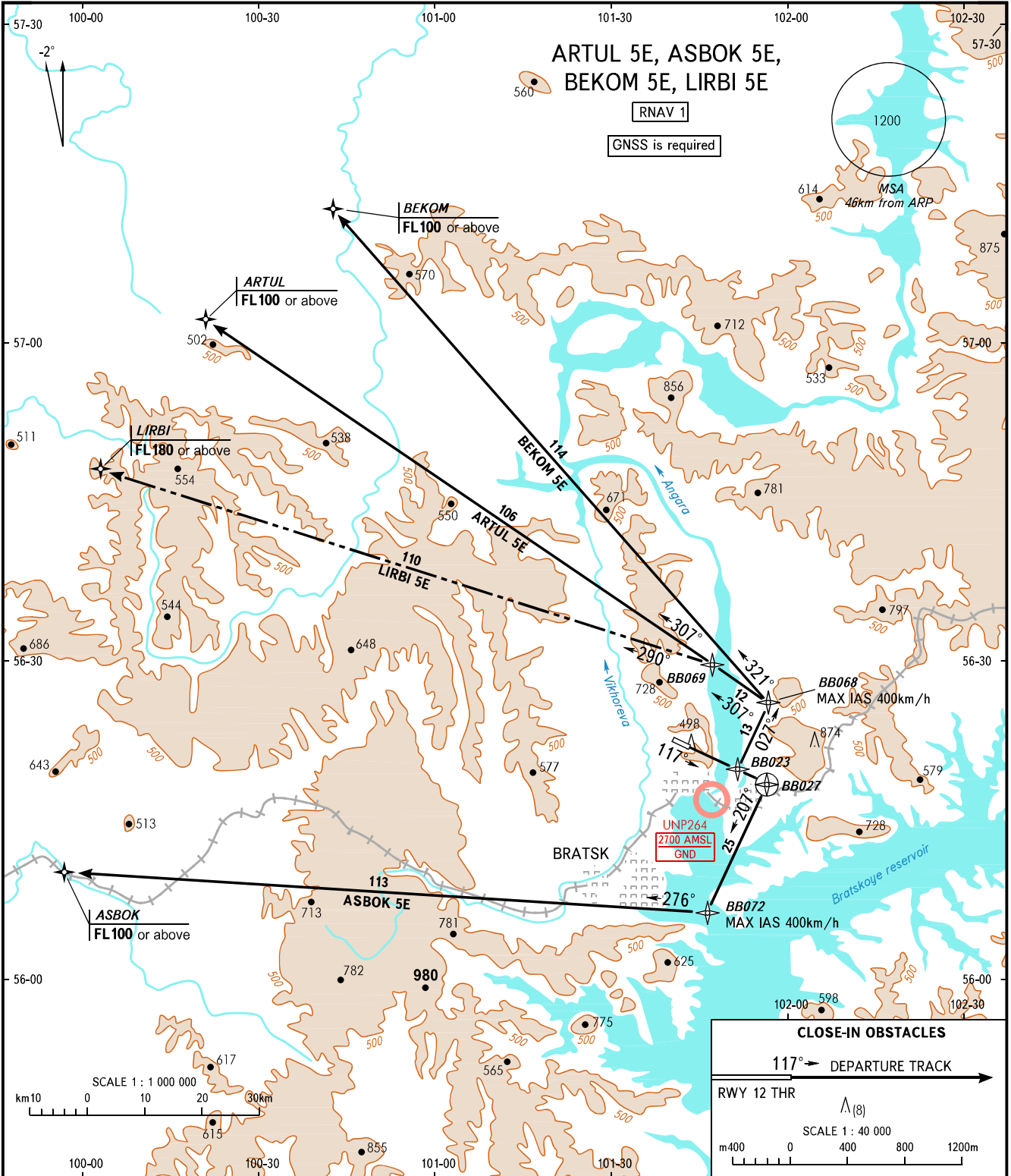


STANDARD DEPARTURE CHART
INSTRUMENT (SID) - ICAO

TRANSITION
HEIGHT : (900)

BRATSK, RUSSIA
BRATSK
RNAV (GNSS) RWY 12



TOWER 121.800
APPROACH 118.100

NOTE
There are close-in obstacles.

WARNING
The minimum climb gradients (required due to the airspace structure only) are as follows:
- 3.6% up to FL180 for SID LIRBI 5E.

BEARINGS AND TRACKS ARE MAGNETIC
ALTITUDES, HEIGHTS AND ELEVATIONS ARE IN METRES
DISTANCES ARE IN KILOMETRES

CHANGE: New chart