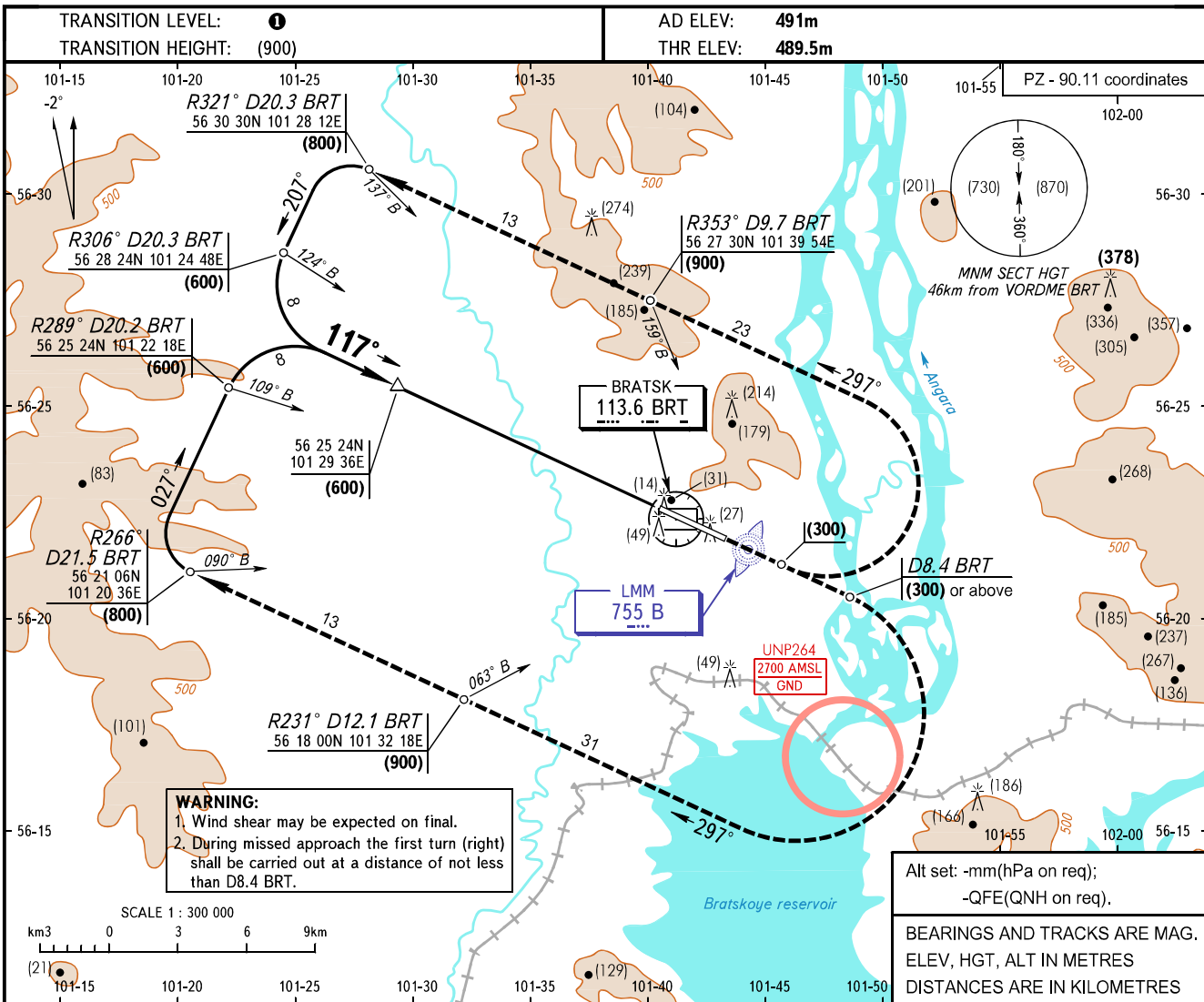


**INSTRUMENT
APPROACH
CHART - ICAO**

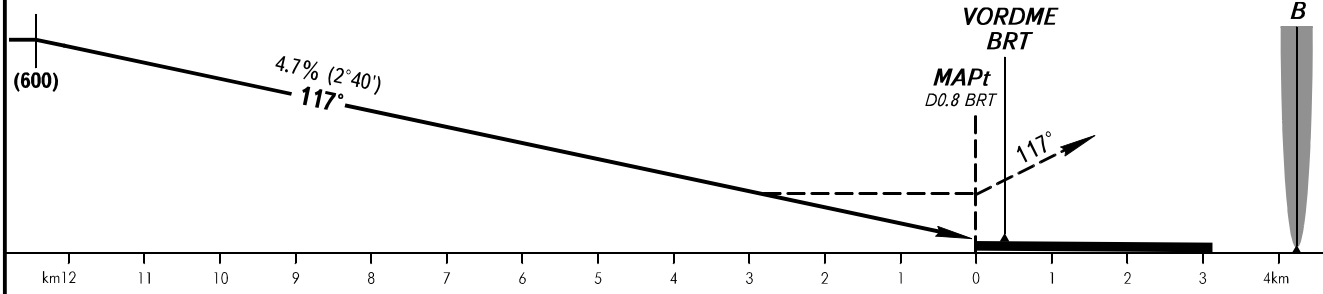
APPROACH **118.100**
TOWER **121.800**

BRATSK, RUSSIA
BRATSK
NDB RWY 12



Alt set: -mm(hPa on req);
-QFE(QNH on req).
BEARINGS AND TRACKS ARE MAG.
ELEV, HGT, ALT IN METRES
DISTANCES ARE IN KILOMETRES

MISSED APPROACH
Climb on track 117° to (300), then turn LEFT (RIGHT by ATC) onto track 297° climbing to (900), then according to chart.



OCA(H)		A	B	C	D							
Straight-in	Approach	629(139)	629(139)	629(139)	629(139)							
	Approach											
Circling		680(190)	795(305)	825(335)	825(335)							
GROUND SPEED	km/h	150	180	210	240	270	300	330	360	390	420	450
RATE OF DESCENT	m/s	1.9	2.3	2.7	3.1	3.5	3.9	4.3	4.7	5.0	5.4	5.8

1 TRANSITION LEVEL:
- FL060 when QFE is 715mm mercury column or above;
- FL070 when QFE is 688mm mercury column or above but less than 715mm mercury column;
- FL080 when QFE is less than 688mm mercury column.
WARNING
MAPt at RWY 12 THR.
Timing not authorized for defining MAPt.

CHANGE: FAF and D withdrawn