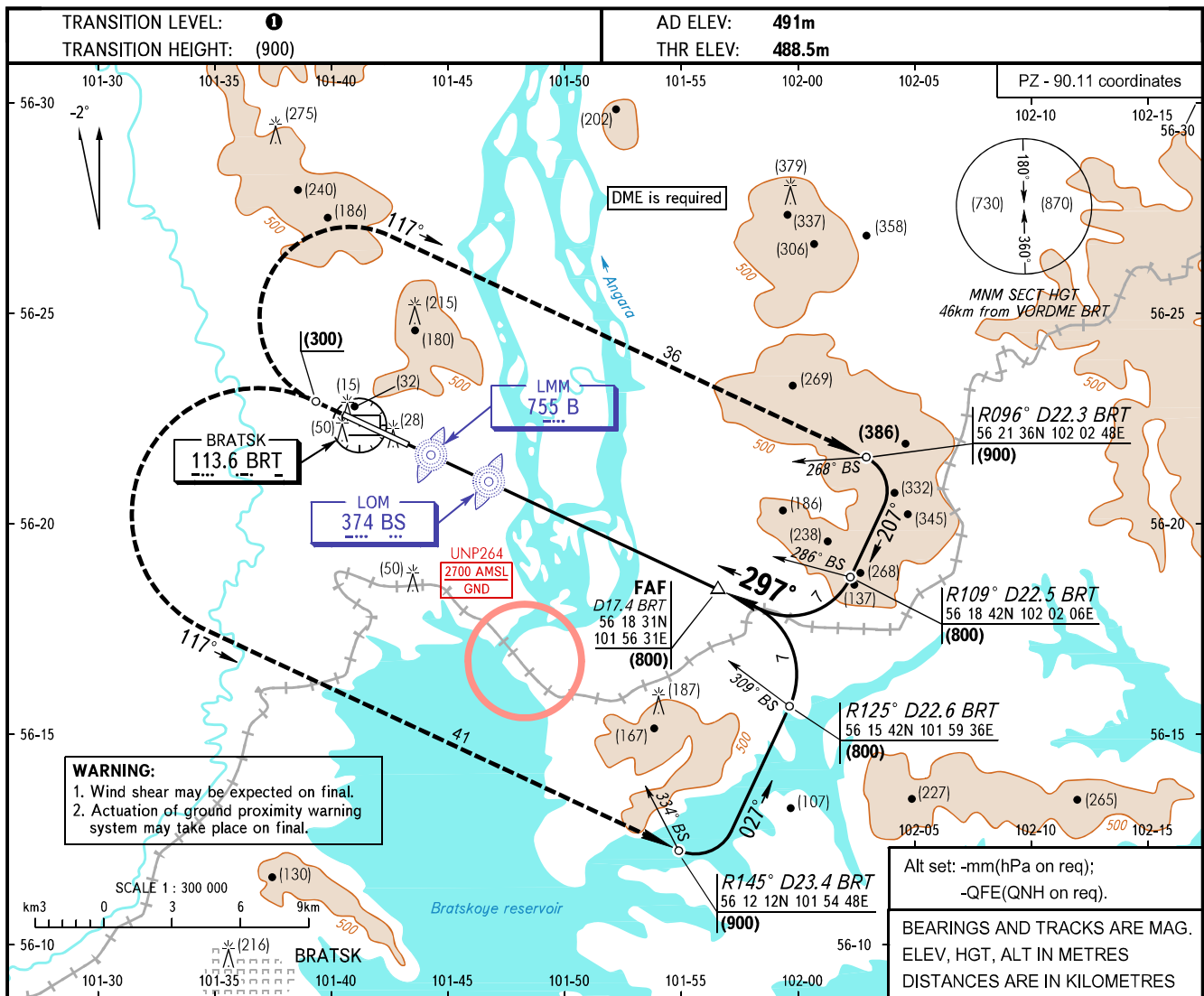


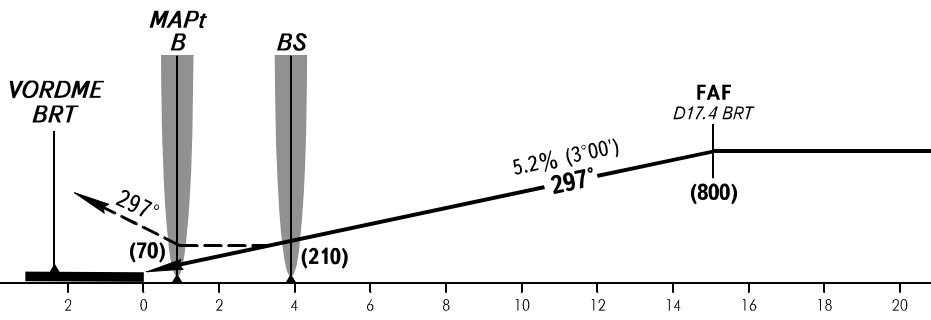
**INSTRUMENT
APPROACH
CHART - ICAO**

APPROACH TOWER **118.100**
TOWER **121.800**

BRATSK, RUSSIA
BRATSK
2 NDB, NDB RWY 30



MISSED APPROACH
Climb on track 297° to (300), then turn RIGHT (LEFT by ATC) onto track 117° climbing to (900), then according to chart.



OCA(H)		A	B	C	D								
Straight-in	2 NDB	With FAF	592(104)	592(104)	592(104)	592(104)							
		WO FAF	906(418)	906(418)	906(418)	906(418)							
Approach	LOM	With FAF	592(104)	592(104)	592(104)	592(104)							
		WO FAF	906(418)	906(418)	906(418)	906(418)							
Circling		680(190)	795(305)	825(335)	825(335)								
GROUND SPEED		km/h	150	180	210	240	270	300	330	360	390	420	450
RATE OF DESCENT		m/s	2.2	2.6	3.1	3.5	3.9	4.4	4.8	5.2	5.7	6.1	6.6

1 TRANSITION LEVEL:
- FLO60 when QFE is 715mm mercury column or above;
- FLO70 when QFE is 688mm mercury column or above but less than 715mm mercury column;
- FLO80 when QFE is less than 688mm mercury column.

WARNING
MAPt at LMM B. Timing not authorized for defining MAPt.