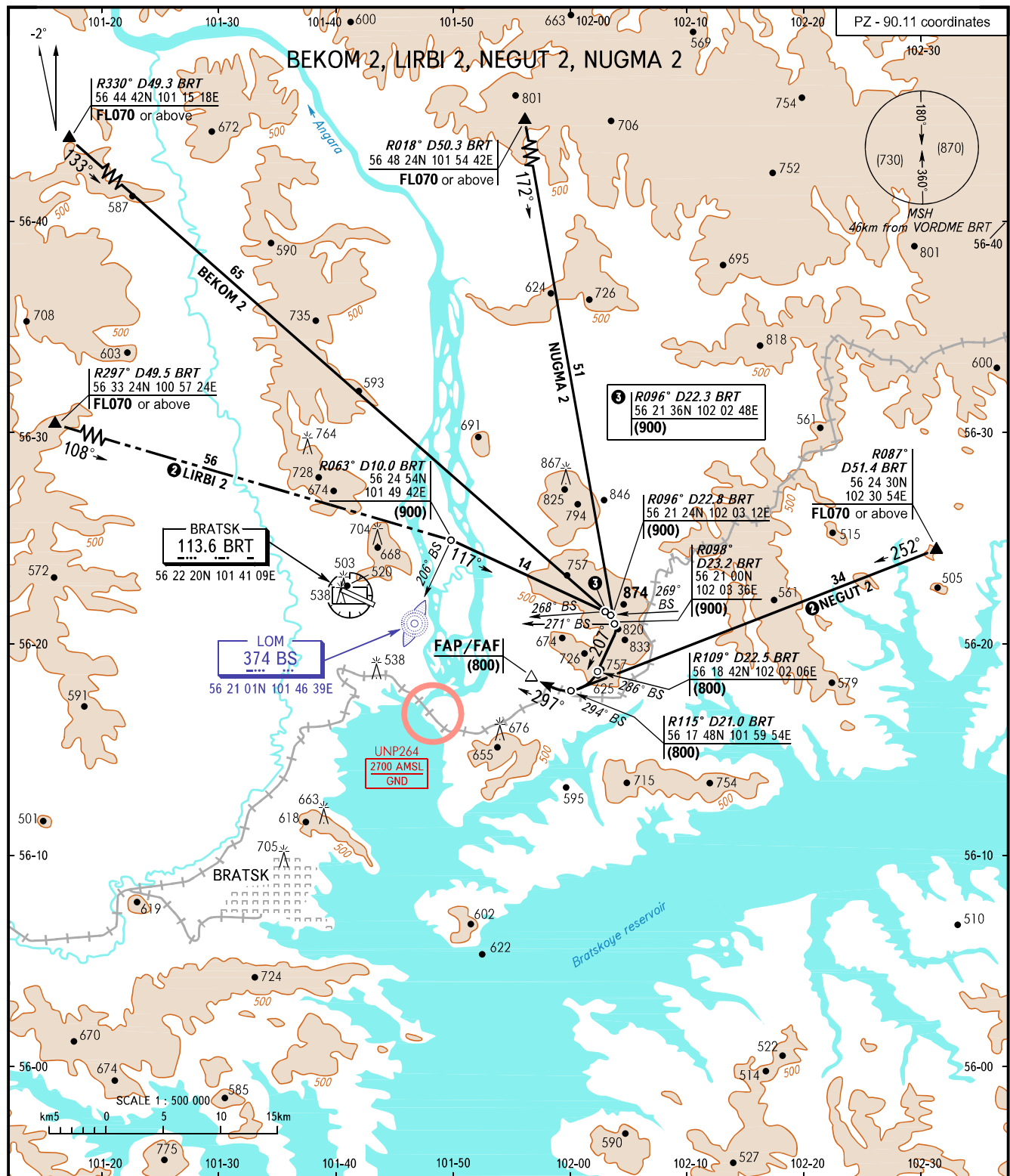


STANDARD ARRIVAL CHART
INSTRUMENT (STAR) - ICAO

TRANSITION
LEVEL : ①

BRATSK, RUSSIA
BRATSK
RWY 30



APPROACH **118.100**
TOWER **121.800**

- ① TRANSITION LEVEL:
- FL060 when QFE is 715mm mercury column or above;
 - FL070 when QFE is 688mm mercury column or above but less than 715mm mercury column;
 - FL080 when QFE is less than 688mm mercury column.

② Only for Russian users.

BEARINGS AND TRACKS ARE MAGNETIC
ALTITUDES, HEIGHTS AND ELEVATIONS ARE IN METRES
DISTANCES ARE IN KILOMETRES