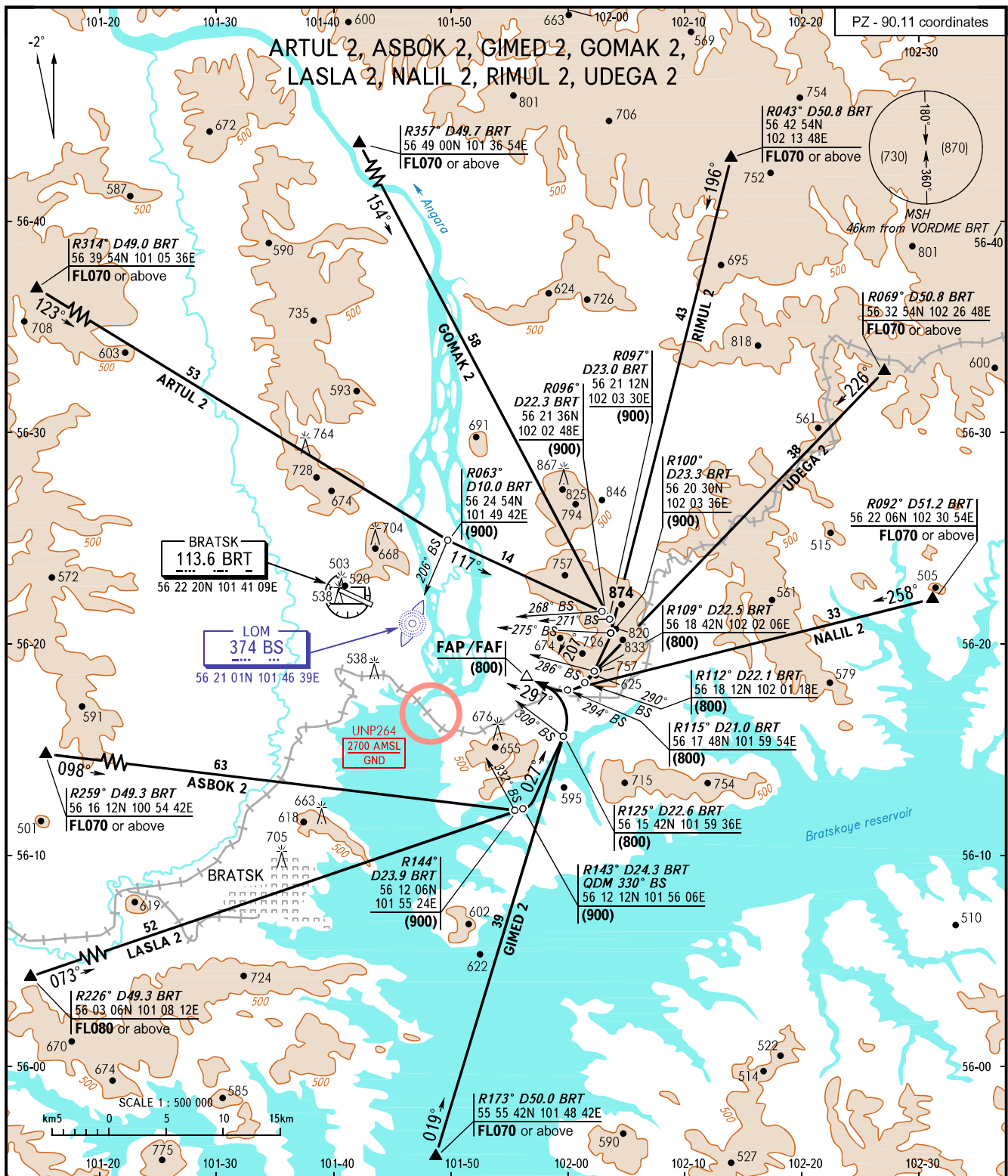


STANDARD ARRIVAL CHART
INSTRUMENT (STAR) - ICAO

TRANSITION
LEVEL: ①

BRATSK, RUSSIA
BRATSK
RWY 30



APPROACH 118.100
TOWER 121.800

- ① TRANSITION LEVEL:
- FLO60 when QFE is 715mm mercury column or above;
 - FLO70 when QFE is 688mm mercury column or above but less than 715mm mercury column;
 - FLO80 when QFE is less than 688mm mercury column.

BEARINGS AND TRACKS ARE MAGNETIC
ALTITUDES, HEIGHTS AND ELEVATIONS ARE IN METRES
DISTANCES ARE IN KILOMETRES