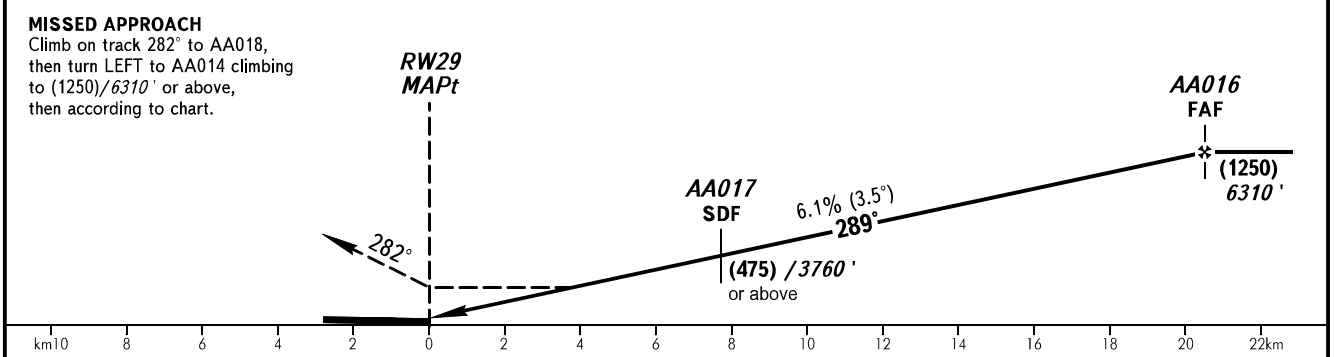
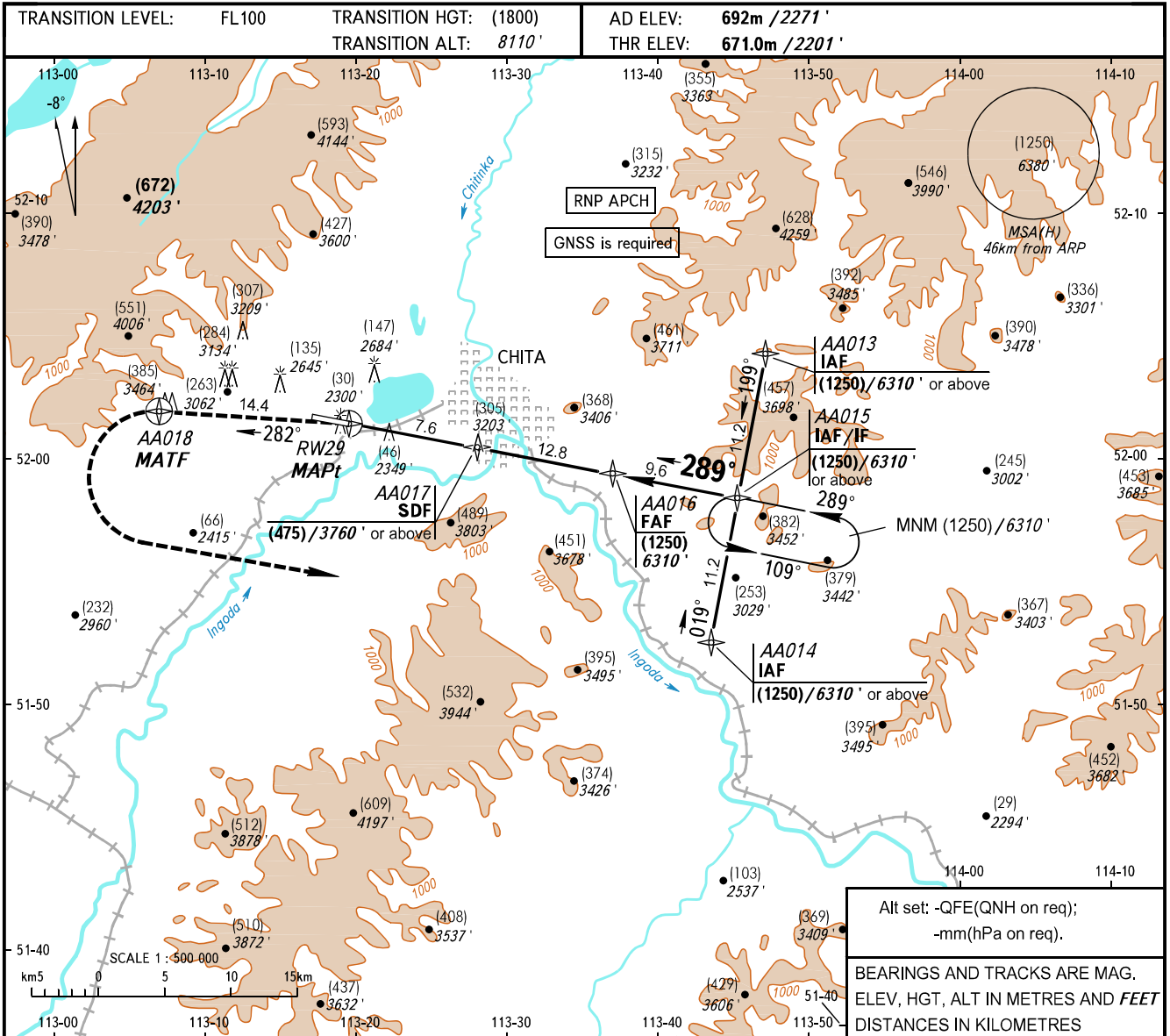


**INSTRUMENT
APPROACH
CHART - ICAO**

TOWER **118.200**

CHITA, RUSSIA
KADALA
RNAV RWY 29



OCA(H)	A	B	C	D									
Straight-in Approach	875(205)	875(205)	875(205)	875(205)									
GROUND SPEED	km/h	120	150	180	210	240	270	300	330	360	390	420	450
RATE OF DESCENT	m/s	2.0	2.5	3.1	3.6	4.1	4.6	5.1	5.6	6.1	6.6	7.1	7.6

WARNING:

1. There is CHITA/Chita-1 AD to the RIGHT of approach heading. Landing heading is 151°/331°.
2. Descending below (475)/3760' before passing SDF - is PROHIBITED.
3. Descending on final is allowed only after the controller's confirmation of the glide slope interception (by DIST).

CHANGE: OBST