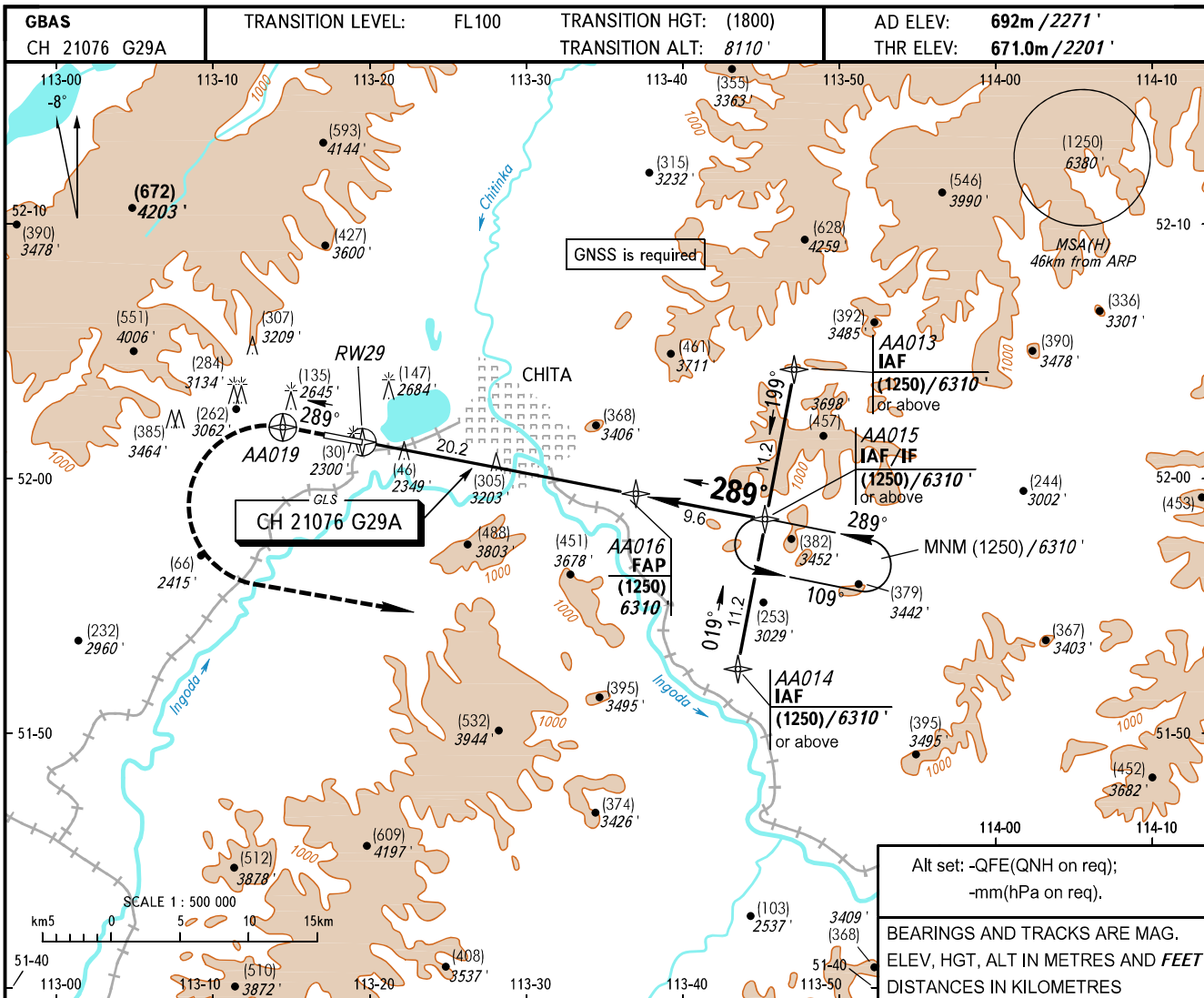


**INSTRUMENT
APPROACH
CHART - ICAO**

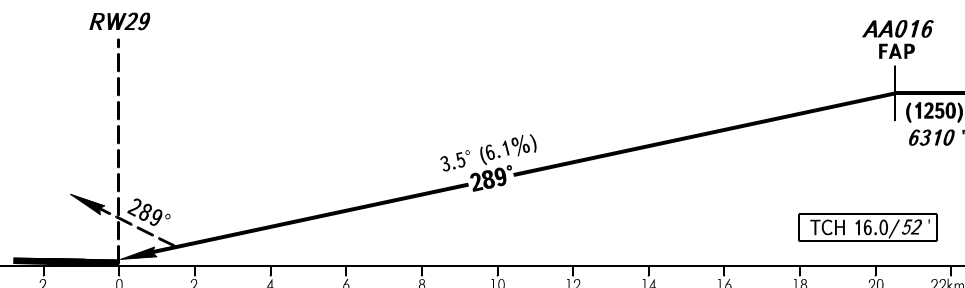
TOWER **118.200**

CHITA, RUSSIA
KADALA
GLS RWY 29



MISSED APPROACH

Climb on track 289° to AA019, then turn LEFT to AA014 climbing to (1250)/6310' or above, then according to chart.



OCA(H)		A	B	C	D	
Straight-in Approach	MNM climb GRAD for missed APCH	2.5%	836(165)	840(169)	844(173)	847(176)
	CAT I	4.0%	745(74)	748(77)	752(81)	756(85)

WARNING:

- There is CHITA/Chita-1 AD to the RIGHT of approach heading. Landing heading is 151°/331°.
- Descending on final is allowed only after the controller's confirmation of the glide slope interception (by DIST).

GROUND SPEED	km/h	120	150	180	210	240	270	300	330	360	390	420	450
RATE OF DESCENT	m/s	2.0	2.5	3.1	3.6	4.1	4.6	5.1	5.6	6.1	6.6	7.1	7.6

CHANGE: OBST