

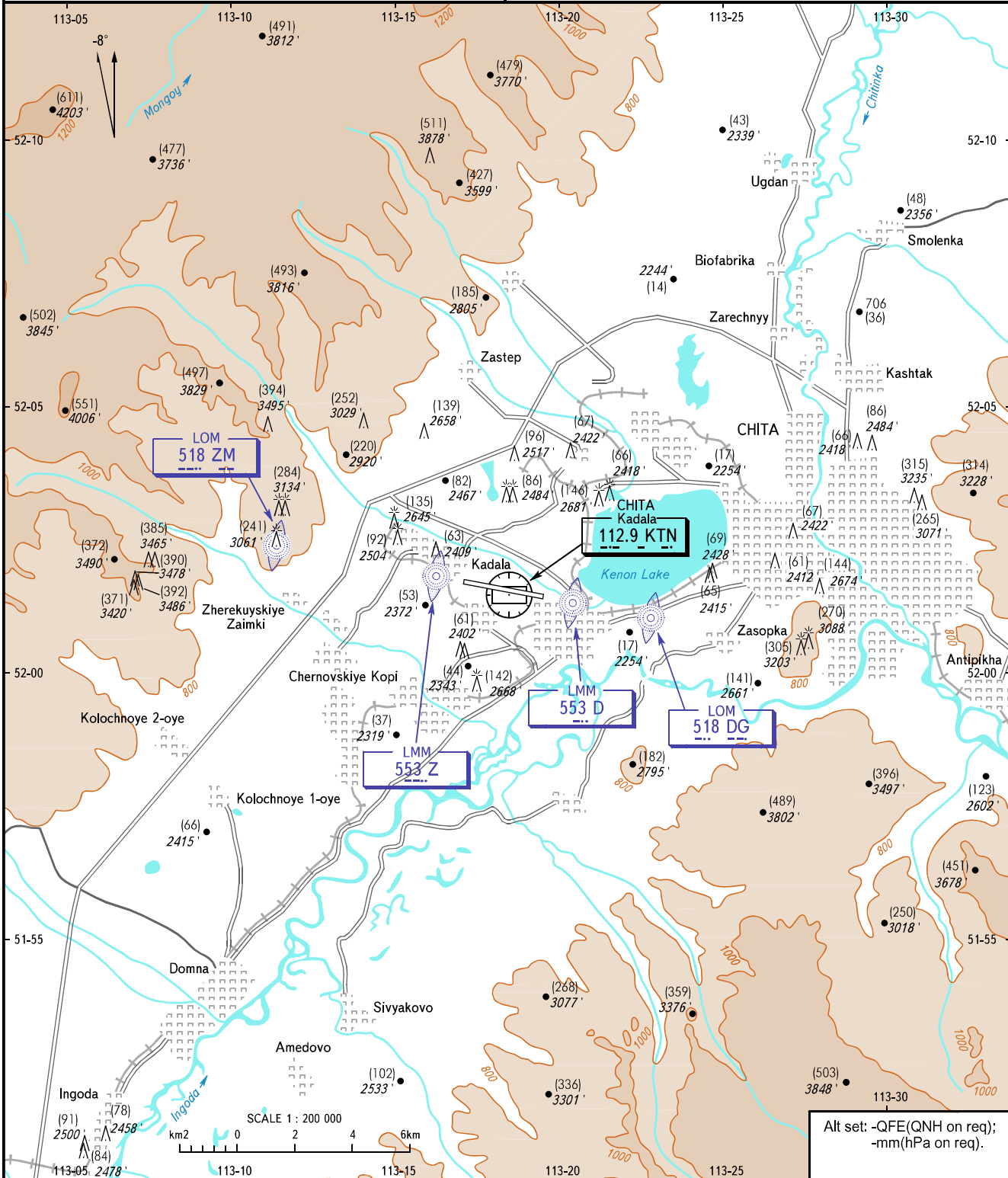
**VISUAL
APPROACH
CHART - ICAO**

**CHITA, RUSSIA
KADALA
RWY 29**

TOWER **118.200**

TRANSITION LEVEL: FL100
TRANSITION HGT: (1800)
TRANSITION ALT: 8110'

AD ELEV: 692m / 2271'
THR ELEV: 671.0m / 2201'



Alt set: -QFE(QNH on req);
-mm(hPa on req).

VISUAL APPROACH
Clearance for the aircraft, carrying out an IFR flight, to execute a visual approach shall be requested by a flight crew or shall be initiated by ATC unit. In the latter case the coordination with the flight crew is required.

WARNING
Obstacles below (30)/2300' AAL are not shown.

CHANGE: OBST