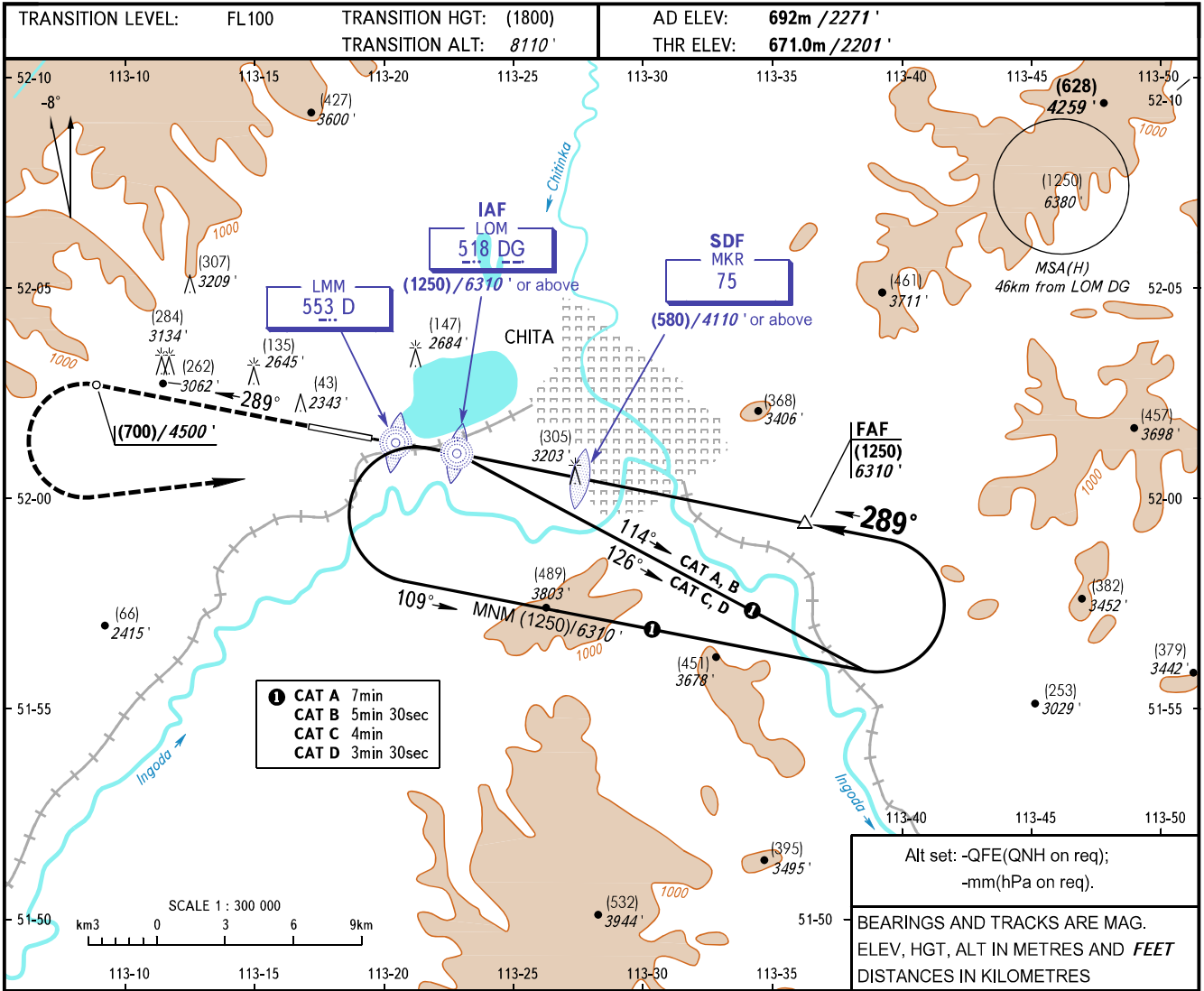


**INSTRUMENT
APPROACH
CHART - ICAO**

TOWER **118.200**

**CHITA, RUSSIA
KADALA
2 NDB RWY 29**



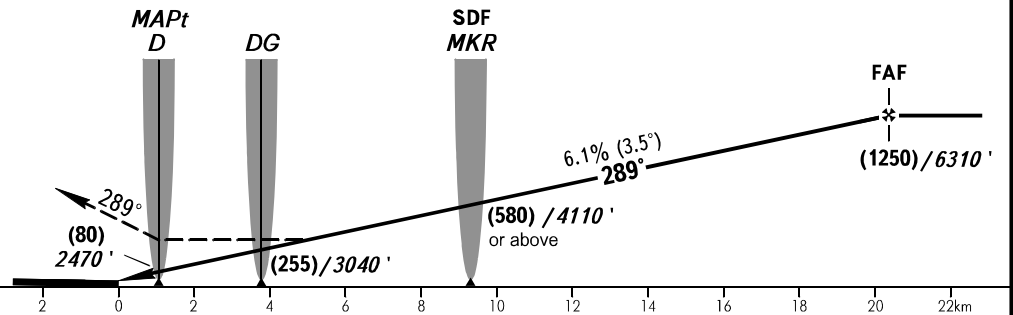
- ① CAT A 7min
- CAT B 5min 30sec
- CAT C 4min
- CAT D 3min 30sec

Alt set: -QFE(QNH on req);
-mm(hPa on req).

BEARINGS AND TRACKS ARE MAG.
ELEV, HGT, ALT IN METRES AND FEET
DISTANCES IN KILOMETRES

FAF is fixed by TAR D21.6

MISSED APPROACH
Climb on track 289° to (700)/4500', then turn LEFT to LOM DG climbing to (1250)/6310', then according to chart.



OCA(H)		A	B	C	D
Straight-in Approach	With SDF	980(310)	980(310)	980(310)	980(310)
	WO SDF	1250(580)	1250(580)	1250(580)	1250(580)

WARNING:
 1. There is CHITA/Chita-1 AD to the RIGHT of approach heading. Landing heading is 151°/331°.
 2. Descending below (580)/4110' before passing MKR - is PROHIBITED.

GROUND SPEED	km/h	120	150	180	210	240	270	300	330	360	390	420	450
RATE OF DESCENT	m/s	2.0	2.5	3.1	3.6	4.1	4.6	5.1	5.6	6.1	6.6	7.1	7.6

CHANGE: OBST