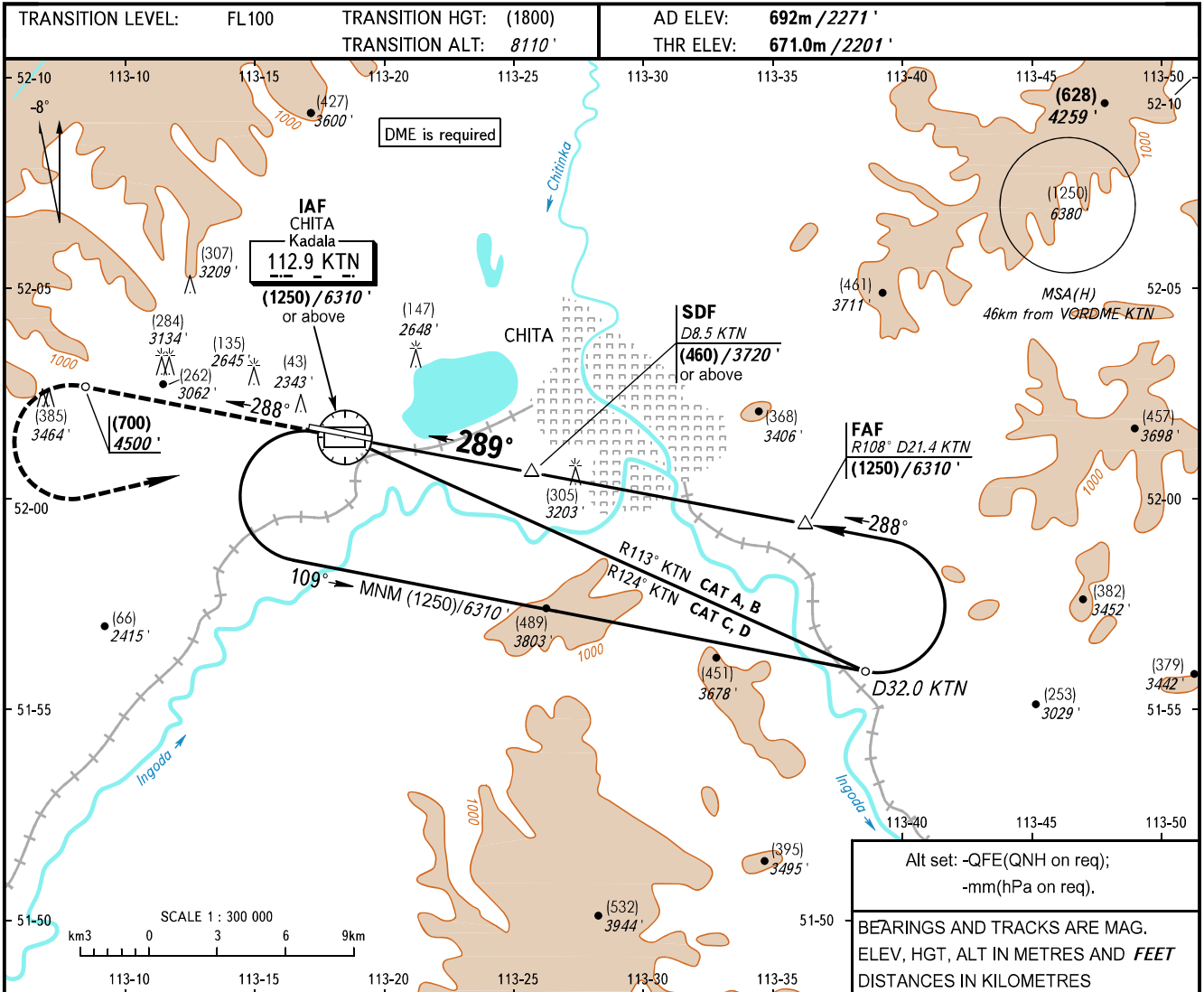


**INSTRUMENT  
APPROACH  
CHART - ICAO**

TOWER **118.200**

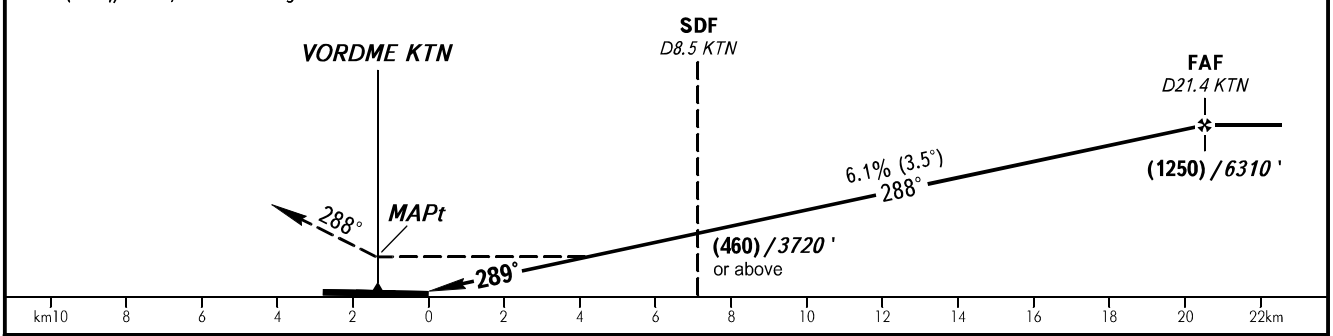
**CHITA, RUSSIA  
KADALA  
VOR RWY 29**



Alt set: -QFE(QNH on req);  
-mm(hPa on req).

BEARINGS AND TRACKS ARE MAG,  
ELEV, HGT, ALT IN METRES AND FEET  
DISTANCES IN KILOMETRES

**MISSED APPROACH**  
Climb on track 288° to (700)/4500', then  
turn LEFT to VORDME KTN climbing  
to (1250)/6310', then according to chart.



OCA(H)		A	B	C	D	
Straight-in Approach	MNM climb GRAD for missed APCH	2.5%	930(260)	930(260)	930(260)	930(260)
		3.0%	880(210)	880(210)	880(210)	880(210)

**WARNING:**

- There is CHITA/Chita-1 AD to the RIGHT of approach heading. Landing heading is 151°/331°.
- Descending below (460)/3720' before passing SDF (D8.5 KTN) - is PROHIBITED.
- Final approach track is offset by 1° from the RWY centre line.

GROUND SPEED	km/h	120	150	180	210	240	270	300	330	360	390	420	450
RATE OF DESCENT	m/s	2.0	2.5	3.1	3.6	4.1	4.6	5.1	5.6	6.1	6.6	7.1	7.6

CHANGE: OBST