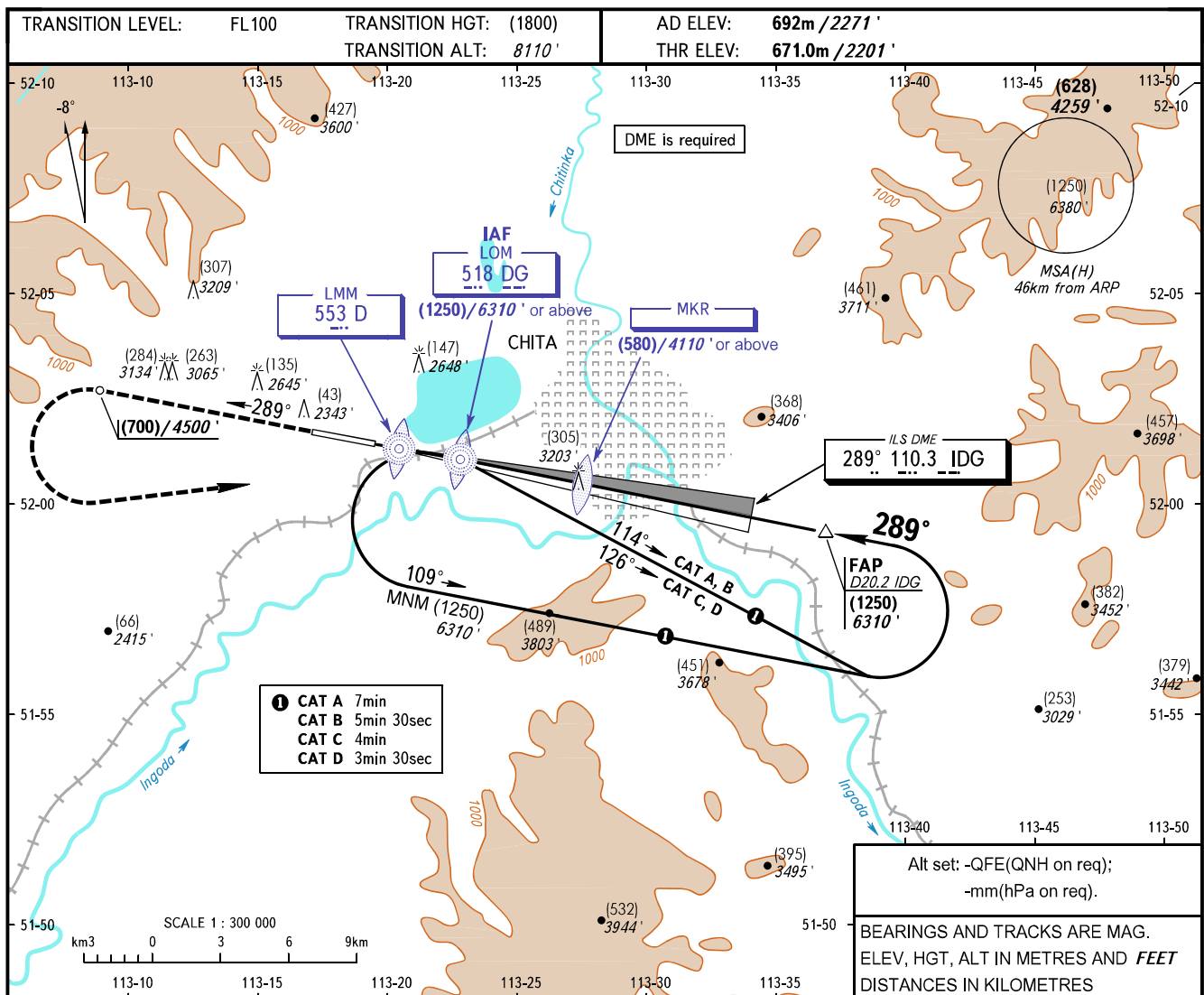


**INSTRUMENT  
APPROACH  
CHART - ICAO**

**CHITA, RUSSIA**  
KADALA  
ILS Y CAT I RWY 29

TOWER **118.200**

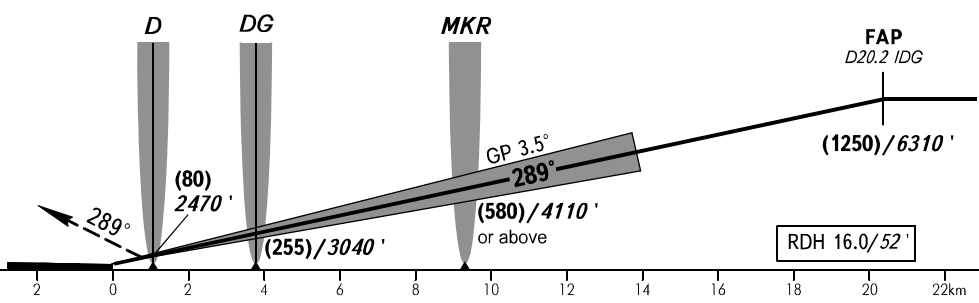


- 1** CAT A 7min
- CAT B 5min 30sec
- CAT C 4min
- CAT D 3min 30sec

Alt set: -QFE(QNH on req);  
-mm(hPa on req).

BEARINGS AND TRACKS ARE MAG.  
ELEV, HGT, ALT IN METRES AND FEET  
DISTANCES IN KILOMETRES

**MISSED APPROACH**  
Climb on track 289° to (700)/4500', then turn LEFT to LOM DG climbing to (1250)/6310', then according to chart.



OCA(H)		A	B	C	D									
Straight-in Approach	MNM climb GRAD for missed APCH	2.5%	821(150)	825(154)	829(158)	832(161)								
		4.0%	745(74)	748(77)	752(81)	756(85)								
GROUND SPEED		km/h	120	150	180	210	240	270	300	330	360	390	420	450
RATE OF DESCENT		m/s	2.0	2.5	3.1	3.6	4.1	4.6	5.1	5.6	6.1	6.6	7.1	7.6

**WARNING:**  
1. There is CHITA/Chita-1 AD to the RIGHT of approach heading. Landing heading is 151°/331°.  
2. Descending below (580)/4110' before passing MKR - is PROHIBITED.