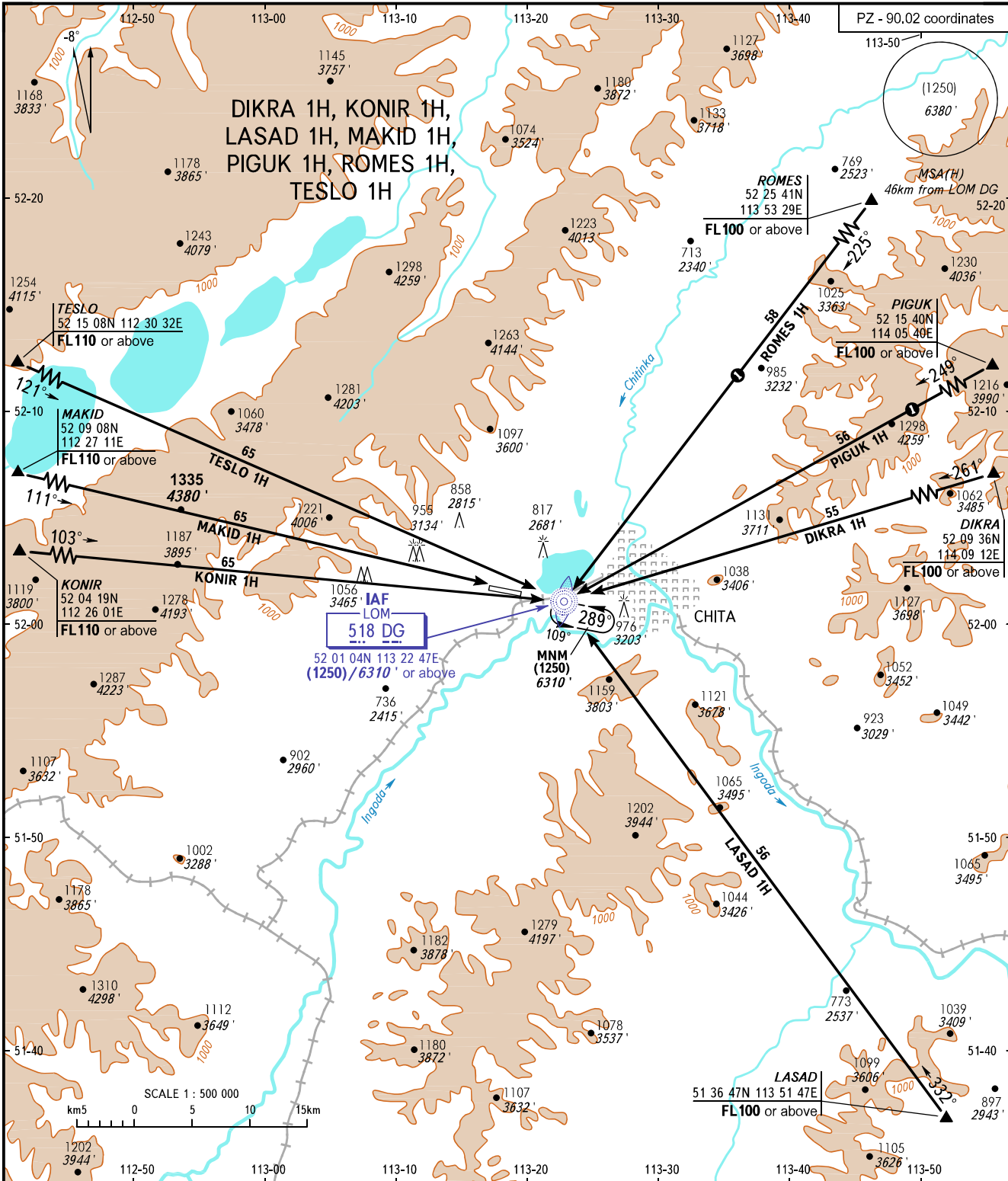


STANDARD ARRIVAL CHART
INSTRUMENT (STAR) - ICAO

TRANSITION
LEVEL: **FL100**

CHITA, RUSSIA
KADALA
RWY 29



APPROACH TOWER **122.000**
TOWER **118.200**

① Only for Russian users of airspace.

BEARINGS AND TRACKS ARE MAGNETIC
ALTITUDES, HEIGHTS AND ELEVATIONS IN
METRES AND FEET
DISTANCES IN KILOMETRES

Alt set: -QFE(QNH on req);
-mm(hPa on req).

CHANGE: Heading, ALT