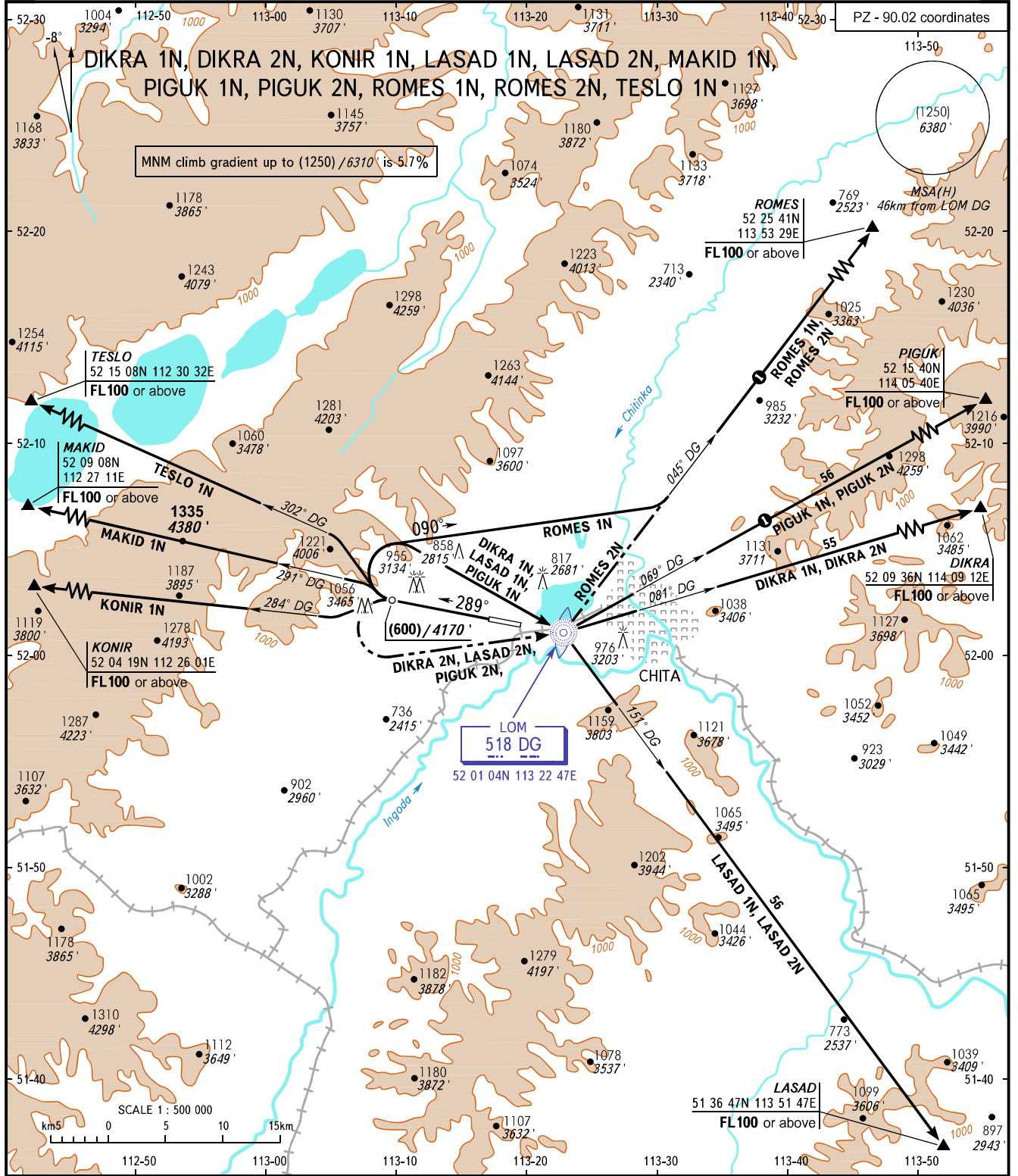


STANDARD DEPARTURE CHART  
INSTRUMENT (SID) - ICAO

CHITA, RUSSIA  
KADALA  
RWY 29

TRANSITION HGT: (1800)  
TRANSITION ALT: 8110'



TOWER **118.200**  
APPROACH **122.000**

Only for Russian users of airspace.

BEARINGS AND TRACKS ARE MAGNETIC  
ALTITUDES, HEIGHTS AND ELEVATIONS IN  
METRES AND FEET  
DISTANCES IN KILOMETRES

Alt set: -QFE(QNH on req);  
-mm(hPa on req).