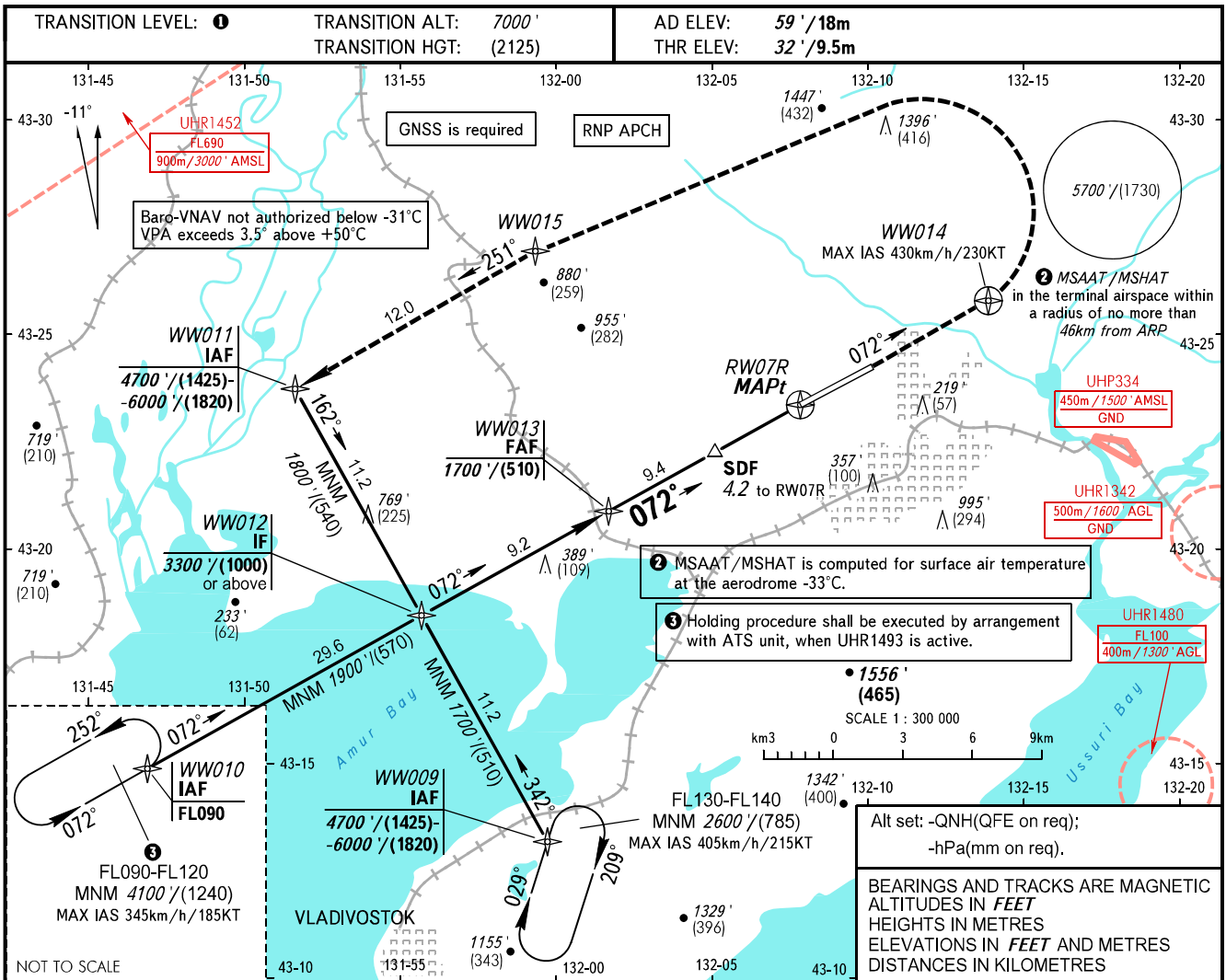


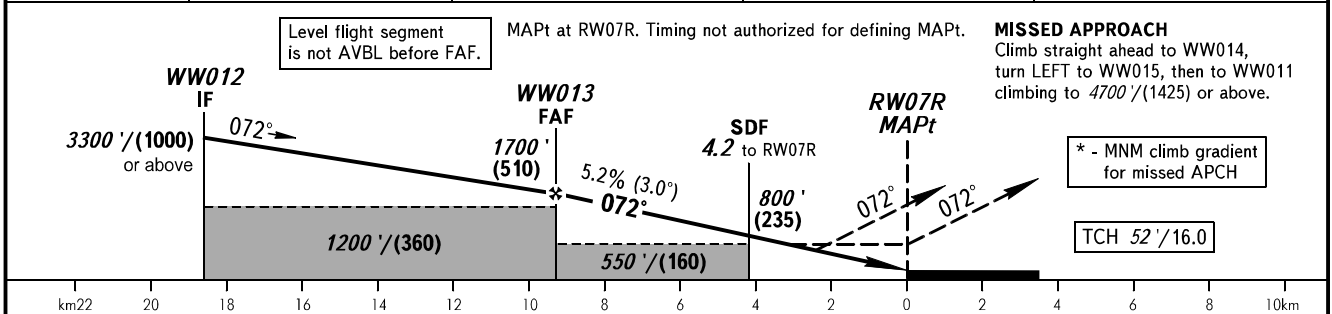
**INSTRUMENT
APPROACH
CHART - ICAO**

VLADIVOSTOK, RUSSIA
KNEVICH
RNP RWY 07R

VLADIVOSTOK RADAR 123.400
VLADIVOSTOK TOWER 119.500



DIST to RW07R	9.4	8.0	6.0	4.0
ALTITUDE/HEIGHT	1700' / (510)	1460' / (440)	1110' / (330)	770' / (225)



OCA(H)		MNM climb gradient	A	B	C	D	1 TRANSITION LEVEL: - FL080 when QNH is 1013 hPa (760mm mercury column) or above; - FL090 when QNH is 977 hPa (733mm mercury column) or above, but less than 1013 hPa (760mm mercury column); - FL100 when QNH is less than 977 hPa (733mm mercury column).					
Straight-in Approach	LNAV	2.5%*	740' (710') / (220)	740' (710') / (220)	740' (710') / (220)	740' (710') / (220)						
	Approach	LNAV	3.4%*	440' (410') / (125)	440' (410') / (125)	440' (410') / (125)	440' (410') / (125)					
VNAV		2.5%*	550' (520') / (160)	560' (530') / (165)	580' (550') / (170)	610' (580') / (180)						
		3.7%*	290' (260') / (80)	300' (260') / (85)	310' (270') / (85)	320' (280') / (90)						
Circling			520' (460') / (145)	660' (600') / (185)	1390' (1330') / (410)	1510' (1460') / (450)						
GROUND SPEED			km/h	150	180	210	240	270	300	330	360	390
			kt	81	97	113	130	146	162	178	194	211
RATE OF DESCENT			m/s	2.2	2.6	3.0	3.5	3.9	4.3	4.8	5.2	5.6
			ft/min	427	512	597	682	768	853	938	1024	1109

CHANGE: MSAAT/MSHAT