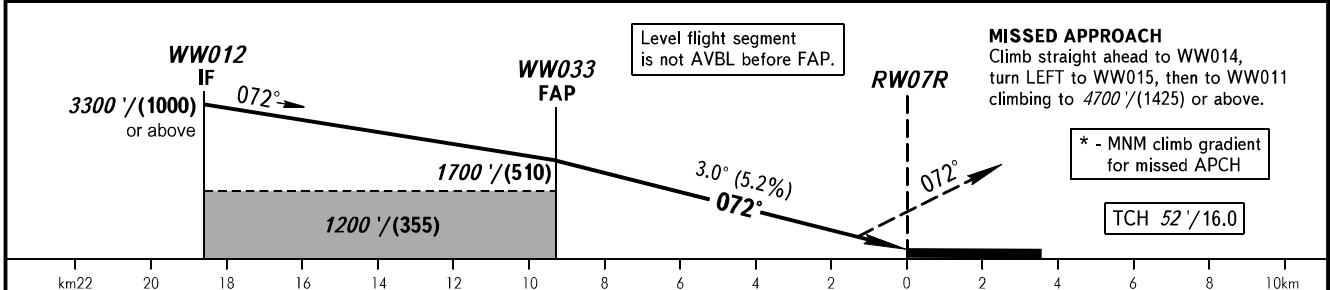
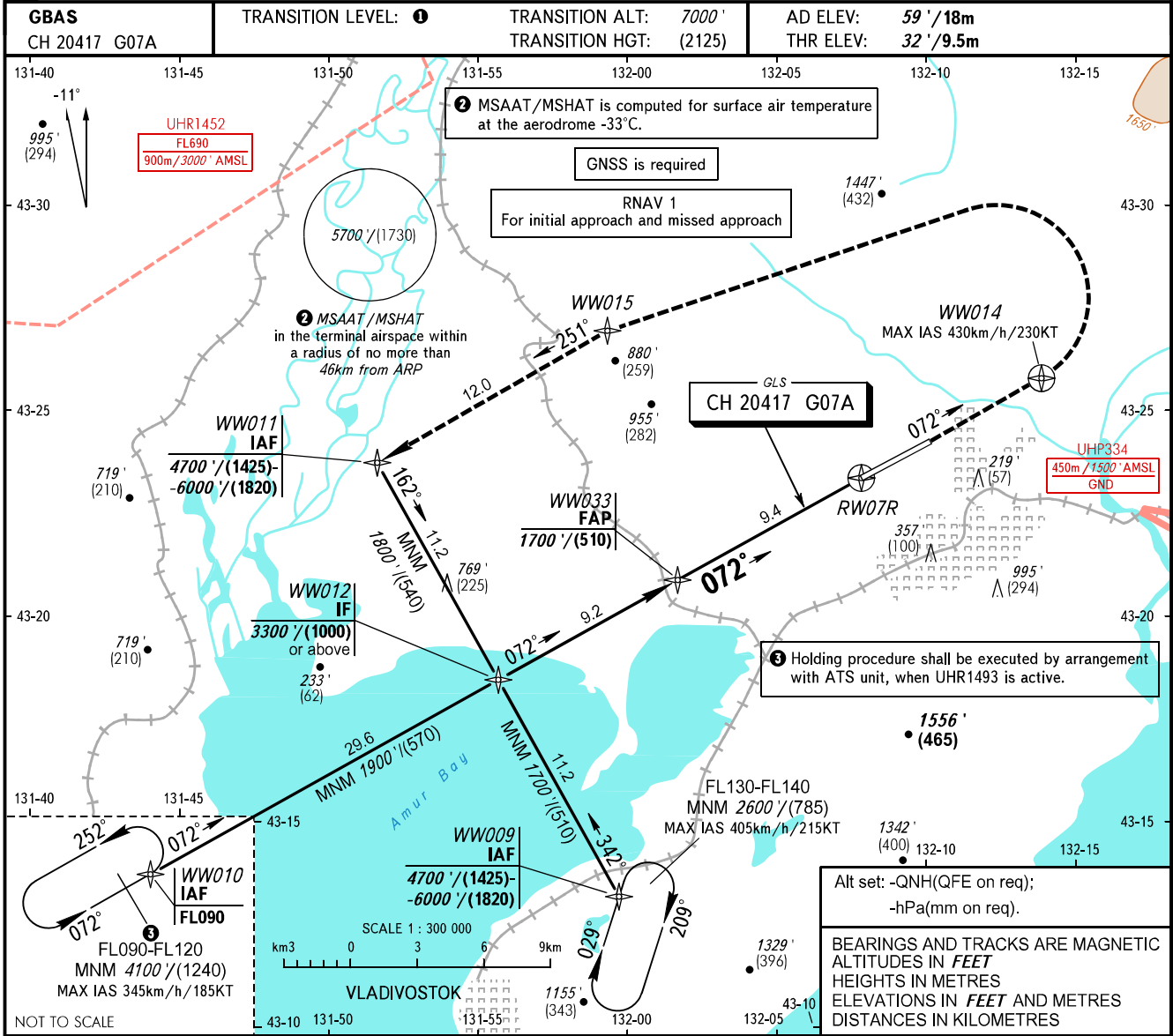


INSTRUMENT
APPROACH
CHART - ICAO

VLADIVOSTOK, RUSSIA
KNEVICH
GLS RWY 07R

VLADIVOSTOK RADAR **123.400**
VLADIVOSTOK TOWER **119.500**



	OCA(H)	MNM climb gradient	A	B	C	D	DL
Straight-in Approach	CAT I	2.5%*	623' (591') (181)	635' (603') (184)	643' (611') (187)	654' (622') (190)	654' (622') (190)
		4.0%*	178' (145') (45)	189' (156') (48)	201' (168') (52)	215' (182') (56)	218' (185') (57)
Circling			520' (460') (145)	660' (600') (185)	1390' (1330') (410)	1510' (1460') (450)	
GROUND SPEED	km/h		150	180	210	240	270
	kt		81	97	113	130	146
RATE OF DESCENT	m/s		2.2	2.6	3.0	3.5	3.9
	ft/min		427	512	597	682	768

① TRANSITION LEVEL:
 - FL080 when QNH is 1013 hPa (760mm mercury column) or above;
 - FL090 when QNH is 977 hPa (733mm mercury column) or above, but less than 1013 hPa (760mm mercury column);
 - FL100 when QNH is less than 977 hPa (733mm mercury column).

MISSED APPROACH
 Climb straight ahead to WW014, turn LEFT to WW015, then to WW011 climbing to 4700' (1425) or above.

* - MNM climb gradient for missed APCH

CHANGE: MSAAT/MSHAT