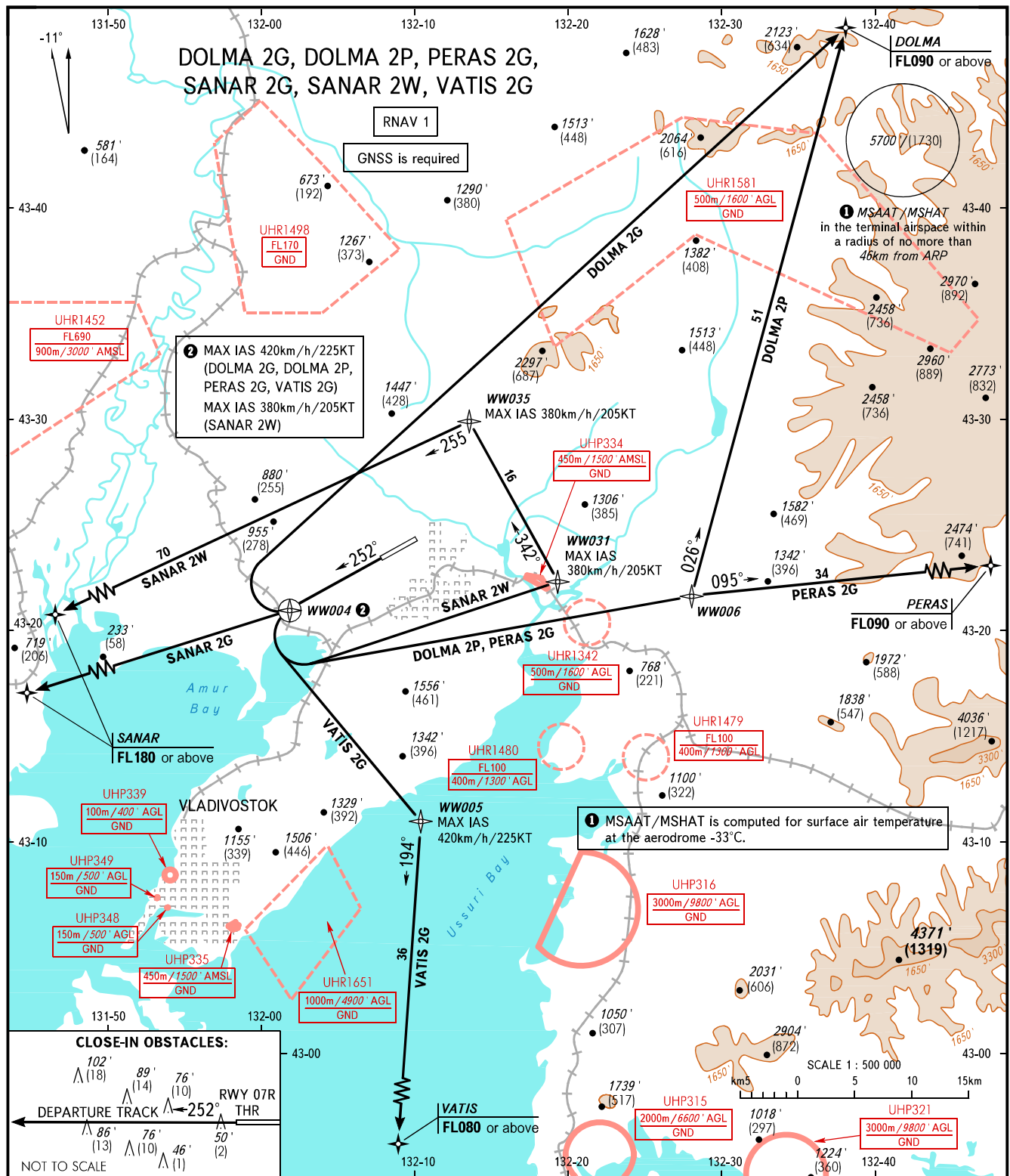


STANDARD DEPARTURE CHART  
INSTRUMENT (SID) - ICAO

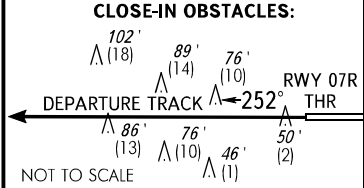
TRANSITION ALT: 7000'  
TRANSITION HGT: (2125)

VLADIVOSTOK, RUSSIA  
KNEVICH  
RNAV RWY 25L



② MAX IAS 420km/h/225KT (DOLMA 2G, DOLMA 2P, PERAS 2G, VATIS 2G)  
MAX IAS 380km/h/205KT (SANAR 2W)

① MSAAT/MSHAT is computed for surface air temperature at the aerodrome -33°C.



VLADIVOSTOK TOWER 119.500  
VLADIVOSTOK RADAR 123.400

BEARINGS AND TRACKS ARE MAGNETIC  
ALTITUDES IN FEET  
HEIGHTS IN METRES  
ELEVATIONS IN FEET AND METRES  
DISTANCES IN KILOMETRES

Alt set: -QNH(QFE on req);  
-hPa(mm on req).

The minimum climb gradients required due to obstacles:  
- 3.6% up to 1500'/(445) for DOLMA 2P, PERAS 2G;  
- 3.7% up to 1200'/(335) for SANAR 2W.  
The minimum climb gradients required due to the airspace structure:  
- 3.5% up to 3300'/(995) for DOLMA 2G;  
- 3.5% up to 6000'/(1820) DOLMA 2P, PERAS 2G;  
- 5.4% up to FL180 for SANAR 2W;  
- 6.0% up to 6000'/(1820) for VATIS 2G;  
- 11.5% up to FL180 (5.5% up to 6000'/(1820) by ATC) for SANAR 2G.

**WARNING**  
Close-in obstacles are AVBL.

CHANGE: MSAAT/MSHAT