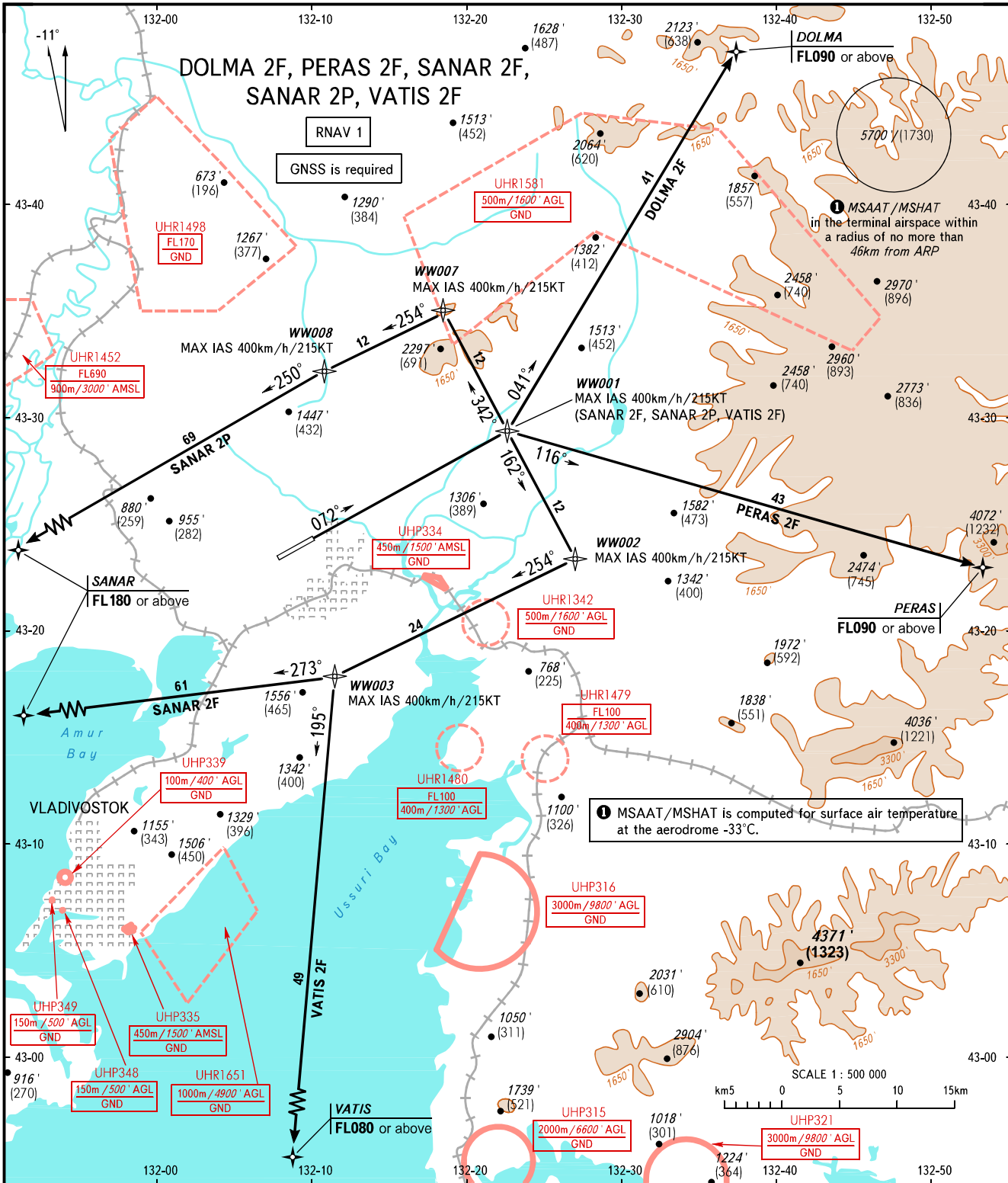


STANDARD DEPARTURE CHART  
INSTRUMENT (SID) - ICAO

TRANSITION ALT: 7000'  
TRANSITION HGT: (2125)

VLADIVOSTOK, RUSSIA  
KNEVICH I  
RNAV RWY 07R



VLADIVOSTOK TOWER 119.500  
VLADIVOSTOK RADAR 123.400

The minimum climb gradients required due to obstacles:  
 - 4.2% up to 1700' (510) for SANAR 2F, VATIS 2F;  
 - 5.1% up to 2600' (785) for SANAR 2P.  
 The minimum climb gradients required due to the airspace structure:  
 - 5.2% up to 3300' (1000) for VATIS 2F;  
 - 5.2% up to 7000' (2125) for DOLMA 2F, PERAS 2F;  
 - 5.6% up to FL180 for SANAR 2F, SANAR 2P (5.2% up to 3300' (1000) - by ATC).

BEARINGS AND TRACKS ARE MAGNETIC  
 ALTITUDES IN FEET  
 HEIGHTS IN METRES  
 ELEVATIONS IN FEET AND METRES  
 DISTANCES IN KILOMETRES

Alt set: -QNH(QFE on req);  
 -hPa(mm on req).

CHANGE: MSAAT/MSHAT