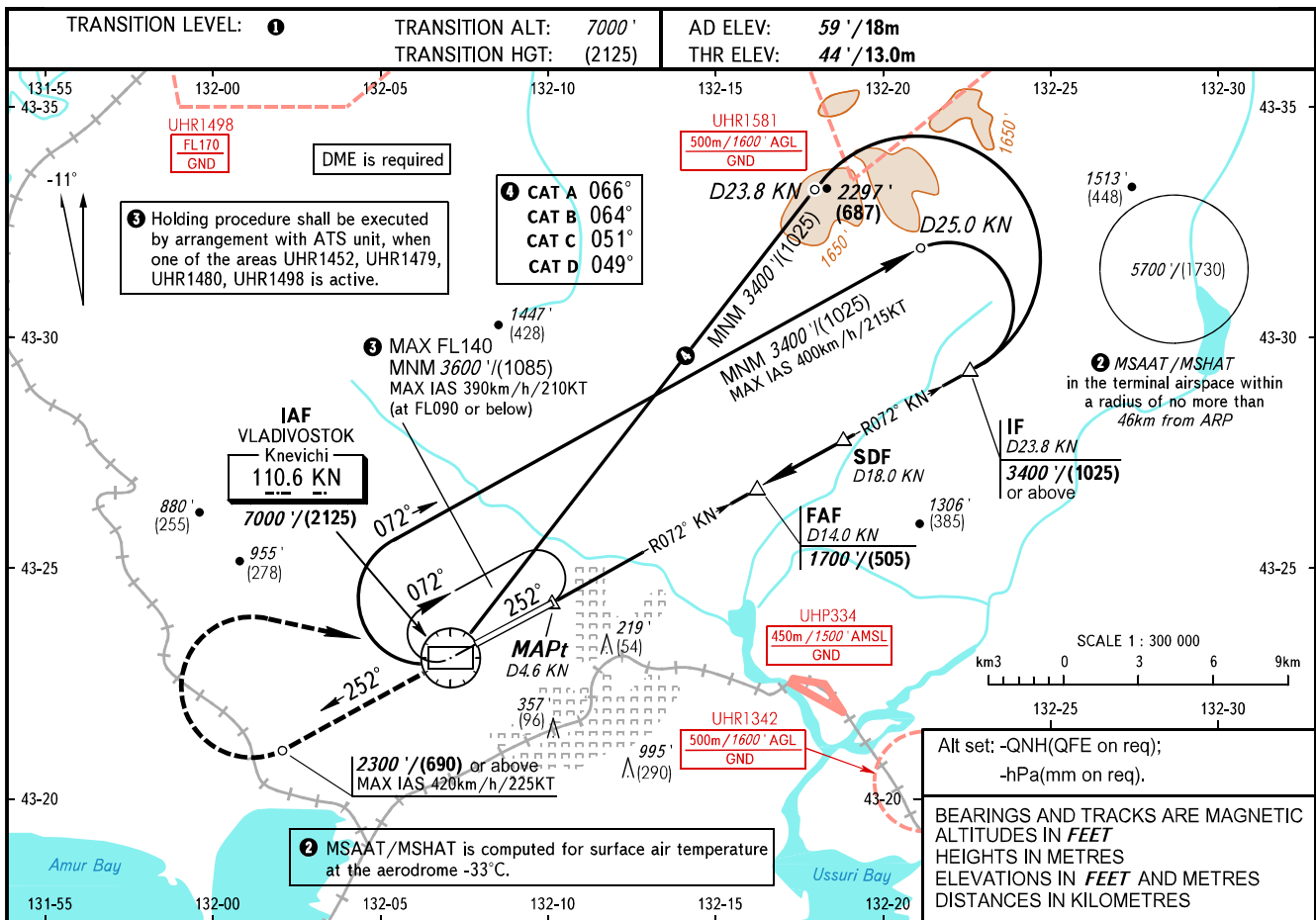


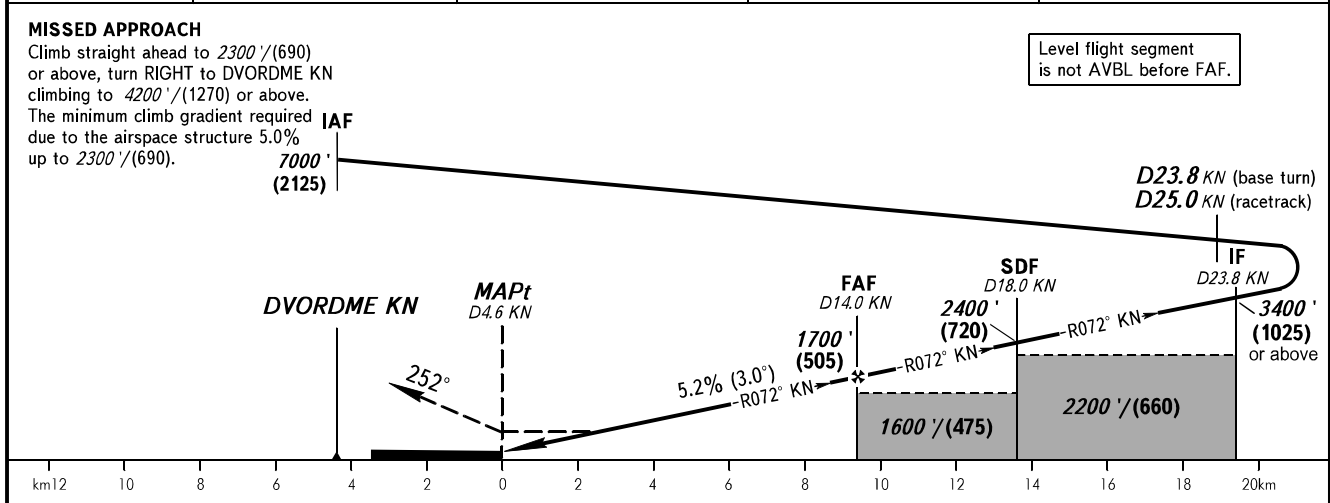
**INSTRUMENT
APPROACH
CHART - ICAO**

VLADIVOSTOK RADAR **123.400**
VLADIVOSTOK TOWER **119.500**

VLADIVOSTOK, RUSSIA
KNEVICH I
DVOR Y RWY 25L



DME KN	8.0	10.0	12.0	14.0
ALTITUDE/HEIGHT	670' / (195)	1010' / (295)	1360' / (405)	1700' / (505)



OCA(H)	A	B	C	D
Straight-in Approach	470' (420') (130)	470' (420') (130)	470' (420') (130)	470' (420') (130)
Circling	520' (460') (145)	660' (600') (185)	1390' (1330') (410)	1510' (1460') (450)

GROUND SPEED	km/h	150	180	210	240	270	300	330	360	390
	kt	81	97	113	130	146	162	178	194	211
RATE OF DESCENT	m/s	2.2	2.6	3.0	3.5	3.9	4.3	4.8	5.2	5.6
	ft/min	427	512	597	682	768	853	938	1024	1109

1 TRANSITION LEVEL:
- FL080 when QNH is 1013 hPa (760mm mercury column) or above;
- FL090 when QNH is 977 hPa (733mm mercury column) or above, but less than 1013 hPa (760mm mercury column);
- FL100 when QNH is less than 977 hPa (733mm mercury column).

WARNING:
1. MAPt at D4.6 KN. Timing not authorized for defining MAPt.
2. Turn before passing DVORDME KN is PROHIBITED.