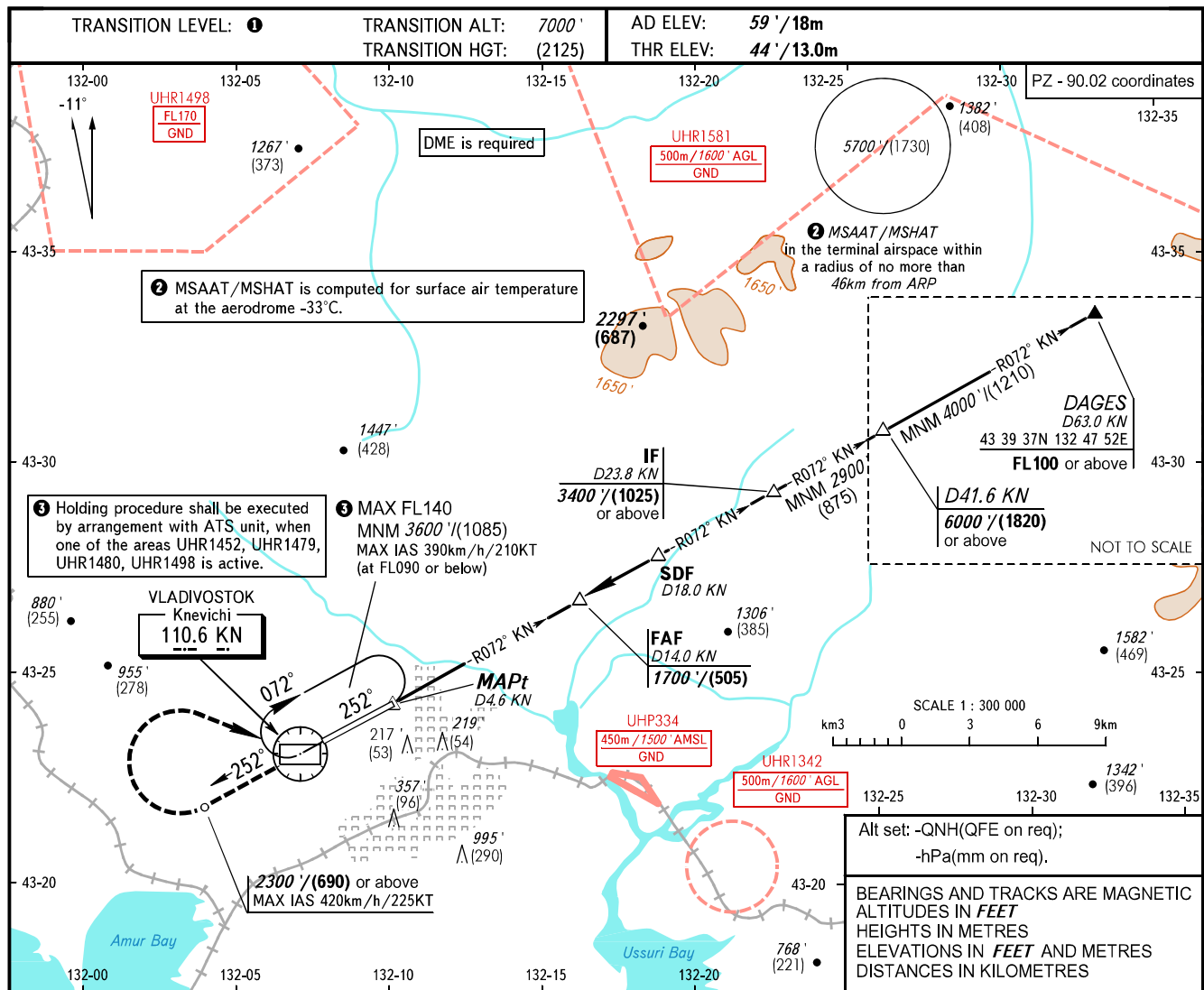


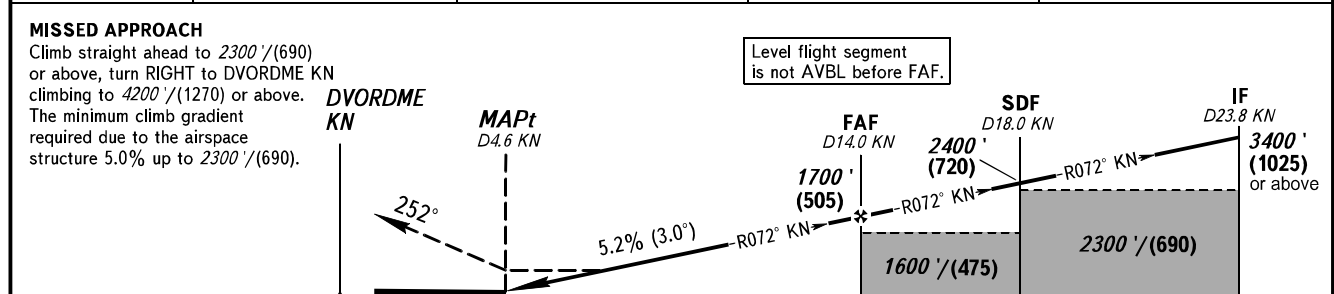
**INSTRUMENT
APPROACH
CHART - ICAO**

VLADIVOSTOK RADAR **123.400**
VLADIVOSTOK TOWER **119.500**

VLADIVOSTOK, RUSSIA
KNEVICH
DVOR Z RWY 25L



DME KN	8.0	10.0	12.0	14.0
ALTITUDE/HEIGHT	670' / (195)	1010' / (295)	1360' / (405)	1700' / (505)



OCA(H)	A	B	C	D	① TRANSITION LEVEL: - FL080 when QNH is 1013 hPa (760mm mercury column) or above; - FL090 when QNH is 977 hPa (733mm mercury column) or above, but less than 1013 hPa (760mm mercury column); - FL100 when QNH is less than 977 hPa (733mm mercury column).						
Straight-in Approach	470' (143) (420')	470' (143) (420')	470' (143) (420')	470' (143) (420')							
Circling	520' (158) (460')	660' (201) (600')	1390' (423) (1330')	1510' (457) (1460')	WARNING: 1. MAPt at D4.6 KN. Timing not authorized for defining MAPt. 2. Turn before passing DVORDME KN is PROHIBITED.						
GROUND SPEED	km/h		150	180		210	240	270	300	330	360
RATE OF DESCENT	kt		81	97	113	130	146	162	178	194	211
	m/s		2.2	2.6	3.0	3.5	3.9	4.3	4.8	5.2	5.6
	ft/min		427	512	597	682	768	853	938	1024	1109

CHANGE: WARNING, MSAAT/MSHAT