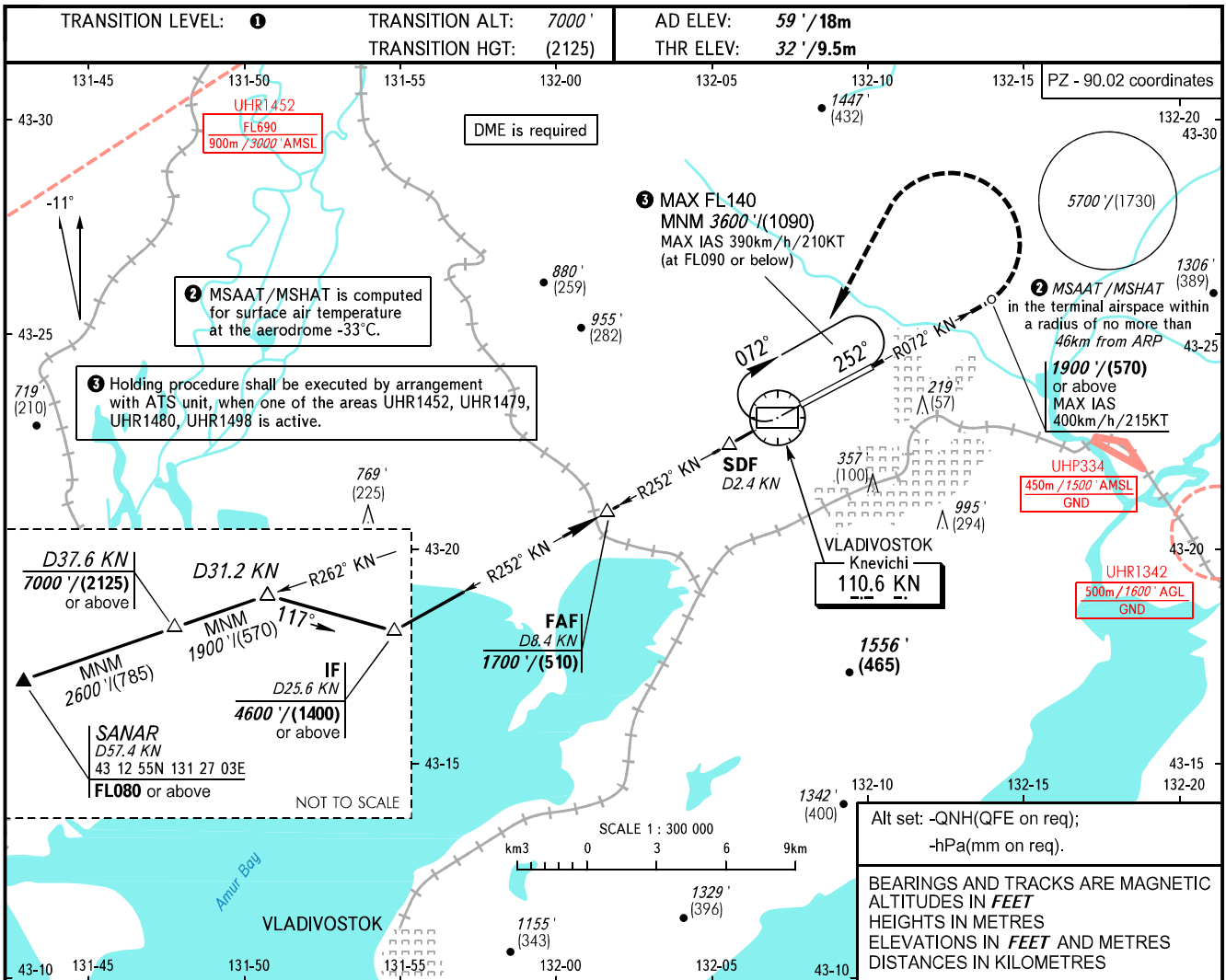


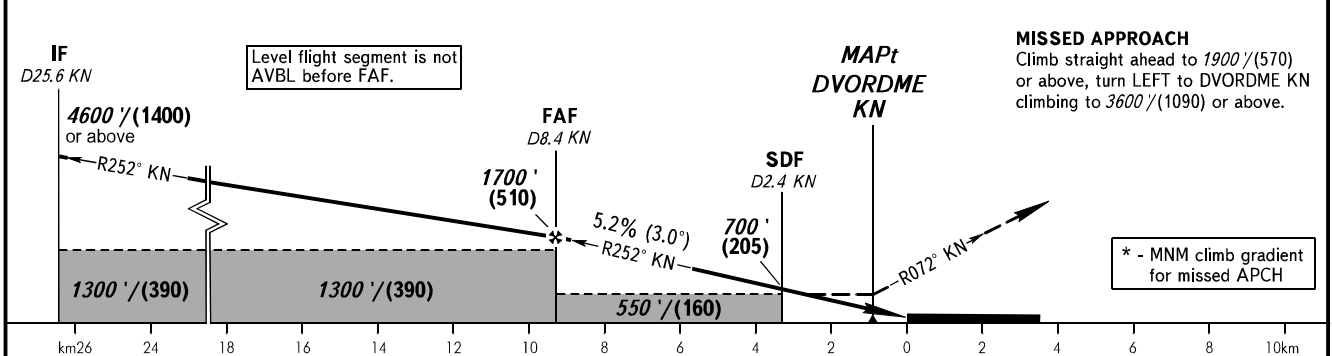
**INSTRUMENT  
APPROACH  
CHART - ICAO**

VLADIVOSTOK RADAR **123.400**  
VLADIVOSTOK TOWER **119.500**

**VLADIVOSTOK, RUSSIA**  
KNEVICH  
DVOR Z RWY 07R



DME KN	8.0	6.0	4.0	2.0
ALTITUDE/HEIGHT	1650'/(495)	1310'/(390)	970'/(290)	620'/(180)



OCA(H)		A	B	C	D						
Straight-in Approach	With SDF	2.5%* 680' (650') (200)	680' (650') (200)	680' (650') (200)	680' (650') (200)						
	WO SDF	2.9%* 440' (410') (125)	440' (410') (125)	440' (410') (125)	440' (410') (125)						
		2.7%* 550' (510') (160)	550' (510') (160)	550' (510') (160)	550' (510') (160)						
Circling		520' (460') (145)	660' (600') (185)	1390' (1330') (410)	1510' (1460') (450)						
GROUND SPEED		km/h	150	180	210	240	270	300	330	360	390
		kt	81	97	113	130	146	162	178	194	211
RATE OF DESCENT		m/s	2.2	2.6	3.0	3.5	3.9	4.3	4.8	5.2	5.6
		ft/min	427	512	597	682	768	853	938	1024	1109

**1. TRANSITION LEVEL:**  
 - FL080 when QNH is 1013 hPa (760mm mercury column) or above;  
 - FL090 when QNH is 977 hPa (733mm mercury column) or above, but less than 1013 hPa (760mm mercury column);  
 - FL100 when QNH is less than 977 hPa (733mm mercury column).  
**WARNING:**  
 1. MAPt at DVORDME KN. Timing not authorized for defining MAPt.  
 2. Turn before passing MAPt is PROHIBITED.

CHANGE: MSAAT/MSHAT