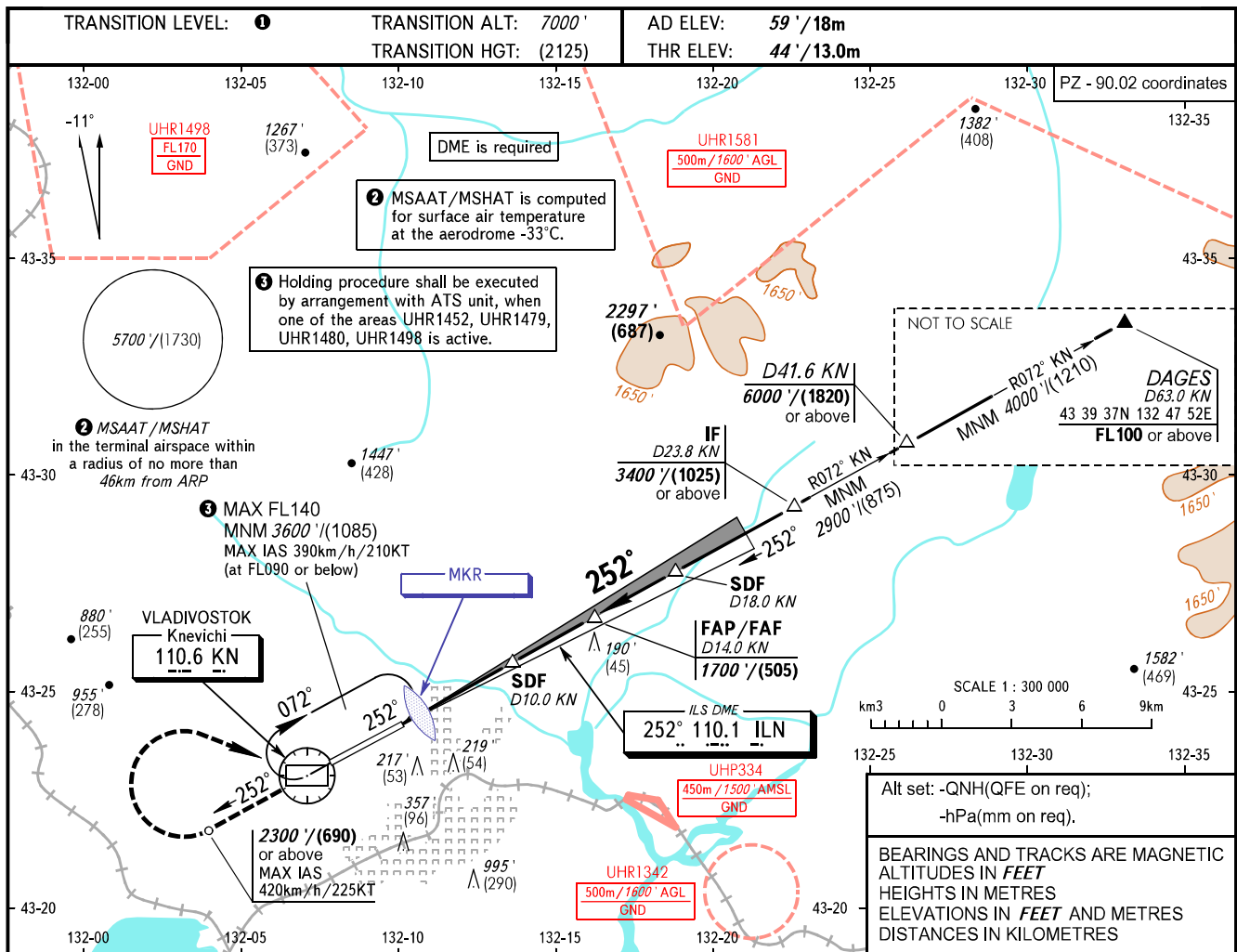


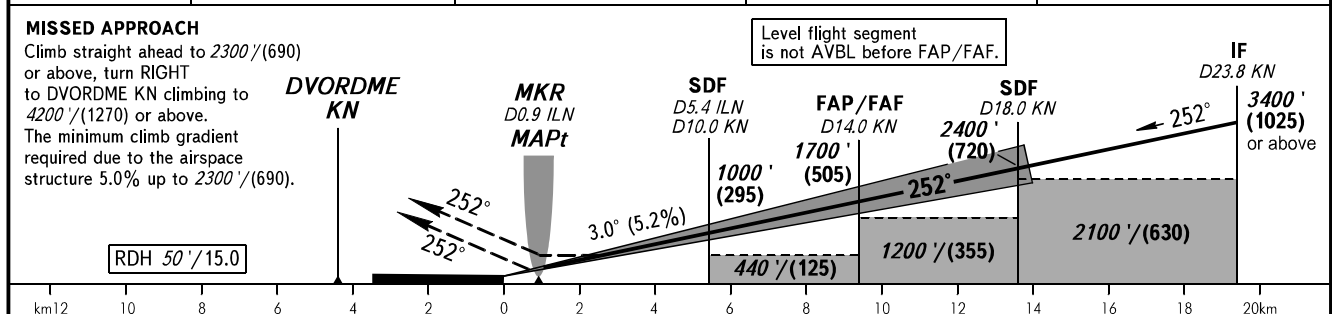
**INSTRUMENT  
APPROACH  
CHART - ICAO**

VLADIVOSTOK RADAR 123.400  
VLADIVOSTOK TOWER 119.500

**VLADIVOSTOK, RUSSIA  
KNEVICH I  
ILS X CAT I/II, LOC X RWY 25L**



DME KN	8.0	10.0	12.0	14.0
ALTITUDE/HEIGHT	670'/(195)	1010'/(295)	1360'/(405)	1700'/(505)



OCA(H)		A	B	C	D	DL					
Straight-in Approach	CAT I	188' (145') (45)	199' (156') (48)	211' (168') (52)	225' (182') (56)	228' (185') (57)					
	CAT II	(55') (17)	(65') (20)	(79') (25)	(94') (29)	(100') (31)					
	LOC	With SDF	350' (300') (95)	350' (300') (95)	350' (300') (95)	350' (300') (95)	350' (300') (95)				
		WO SDF	440' (400') (125)	440' (400') (125)	440' (400') (125)	440' (400') (125)	440' (400') (125)				
Circling		520' (460') (145)	660' (600') (185)	1390' (1330') (410)	1510' (1460') (450)	1510' (1460') (450)					
GROUND SPEED		km/h	150	180	210	240	270	300	330	360	390
		kt	81	97	113	130	146	162	178	194	211
RATE OF DESCENT		m/s	2.2	2.6	3.0	3.5	3.9	4.3	4.8	5.2	5.6
		ft/min	427	512	597	682	768	853	938	1024	1109

**1** TRANSITION LEVEL:  
- FL080 when QNH is 1013 hPa (760mm mercury column) or above;  
- FL090 when QNH is 977 hPa (733mm mercury column) or above, but less than 1013 hPa (760mm mercury column);  
- FL100 when QNH is less than 977 hPa (733mm mercury column).

**WARNING:**  
1. MAPt at MKR (LOC). Timing not authorized for defining MAPt.  
2. Zero range of DME ILN is indicated at RWY 25L THR.  
3. Turn before passing MAPt is PROHIBITED.