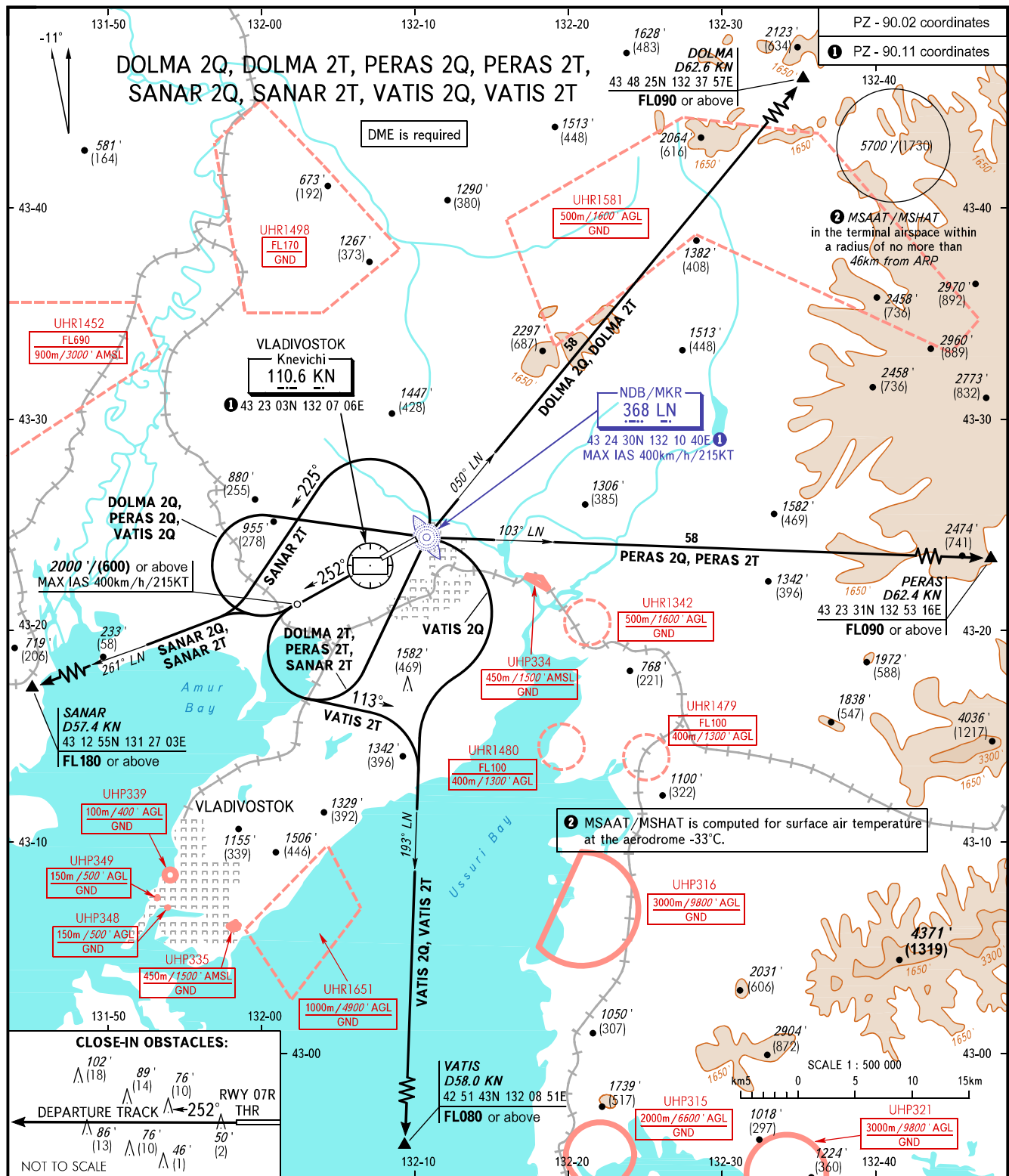


STANDARD DEPARTURE CHART  
INSTRUMENT (SID) - ICAO

TRANSITION ALT: 7000'  
TRANSITION HGT: (2125)

VLADIVOSTOK, RUSSIA  
KNEVICHY  
RWY 25L



VLADIVOSTOK TOWER 119.500  
VLADIVOSTOK RADAR 123.400

The minimum climb gradients required due to the airspace structure:  
 - 5.5% up to 3300'/(995) for DOLMA 2Q, DOLMA 2T, PERAS 2Q, PERAS 2T;  
 - 5.5% up to 3300'/(995) (7.8% up to FL110, when UHR1480 is active) for VATIS 2Q;  
 - 5.5% up to 3300'/(995) (8.8% up to 6300'/(1910), when UHR1651 is active) for VATIS 2T;  
 - 5.7% up to FL180 for SANAR 2T;  
 - 11.5% up to FL180 (5.5% up to 6000'/(1820) by ATC) for SANAR 2Q.

BEARINGS AND TRACKS ARE MAGNETIC  
ALTITUDES IN FEET  
HEIGHTS IN METRES  
ELEVATIONS IN FEET AND METRES  
DISTANCES IN KILOMETRES

Alt set: -QNH(QFE on req);  
-hPa(mm on req).

**WARNING:**  
1. Turn before passing DER is PROHIBITED.  
2. Close-in obstacles are AVBL.

CHANGE: MSAAT/MSHAT