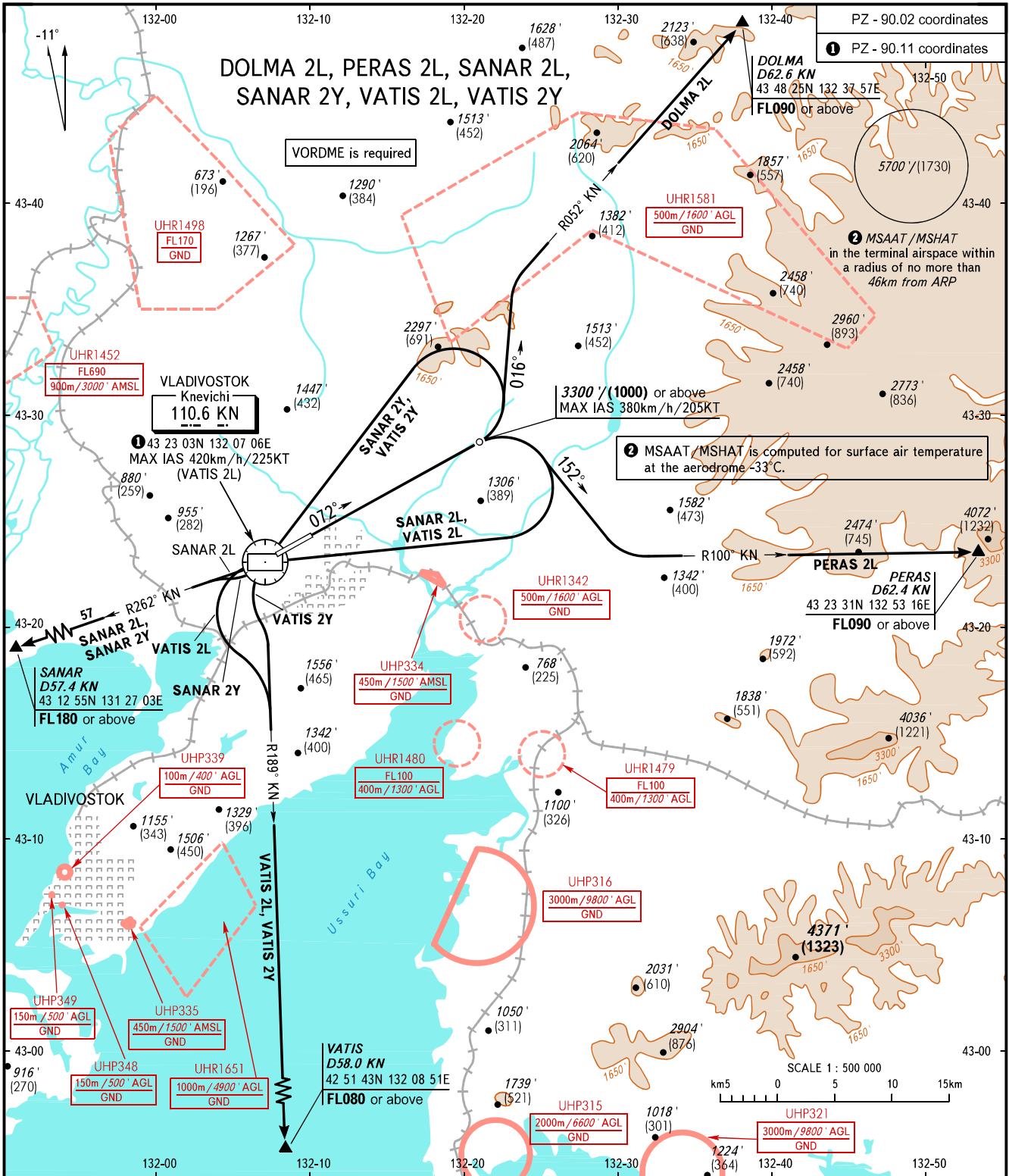


STANDARD DEPARTURE CHART
INSTRUMENT (SID) - ICAO

TRANSITION ALT: **7000'**
TRANSITION HGT: **(2125)**

VLADIVOSTOK, RUSSIA
KNEVICHY
RWY 07R



VLADIVOSTOK TOWER **119.500**
VLADIVOSTOK RADAR **123.400**

The minimum climb gradient required due to obstacles for all SIDs - 3.7% up to 3100'/(940).
The minimum climb gradients required due to the airspace structure:
- 5.2% up to 3300'/(1000), then 3.7% up to FL090 for DOLMA 2L, PERAS 2L;
- 5.2% up to 3300'/(1000) for VATIS 2L, VATIS 2Y;
- 5.5% up to FL180 for SANAR 2L, SANAR 2Y (5.2% up to 3300'/(1000) - by ATC).

WARNING
Turn before passing DER is PROHIBITED.

BEARINGS AND TRACKS ARE MAGNETIC
ALTITUDES IN FEET
HEIGHTS IN METRES
ELEVATIONS IN FEET AND METRES
DISTANCES IN KILOMETRES

Alt set: -QNH(QFE on req);
-hPa(mm on req).

CHANGE: MSAAT/MSHAT