

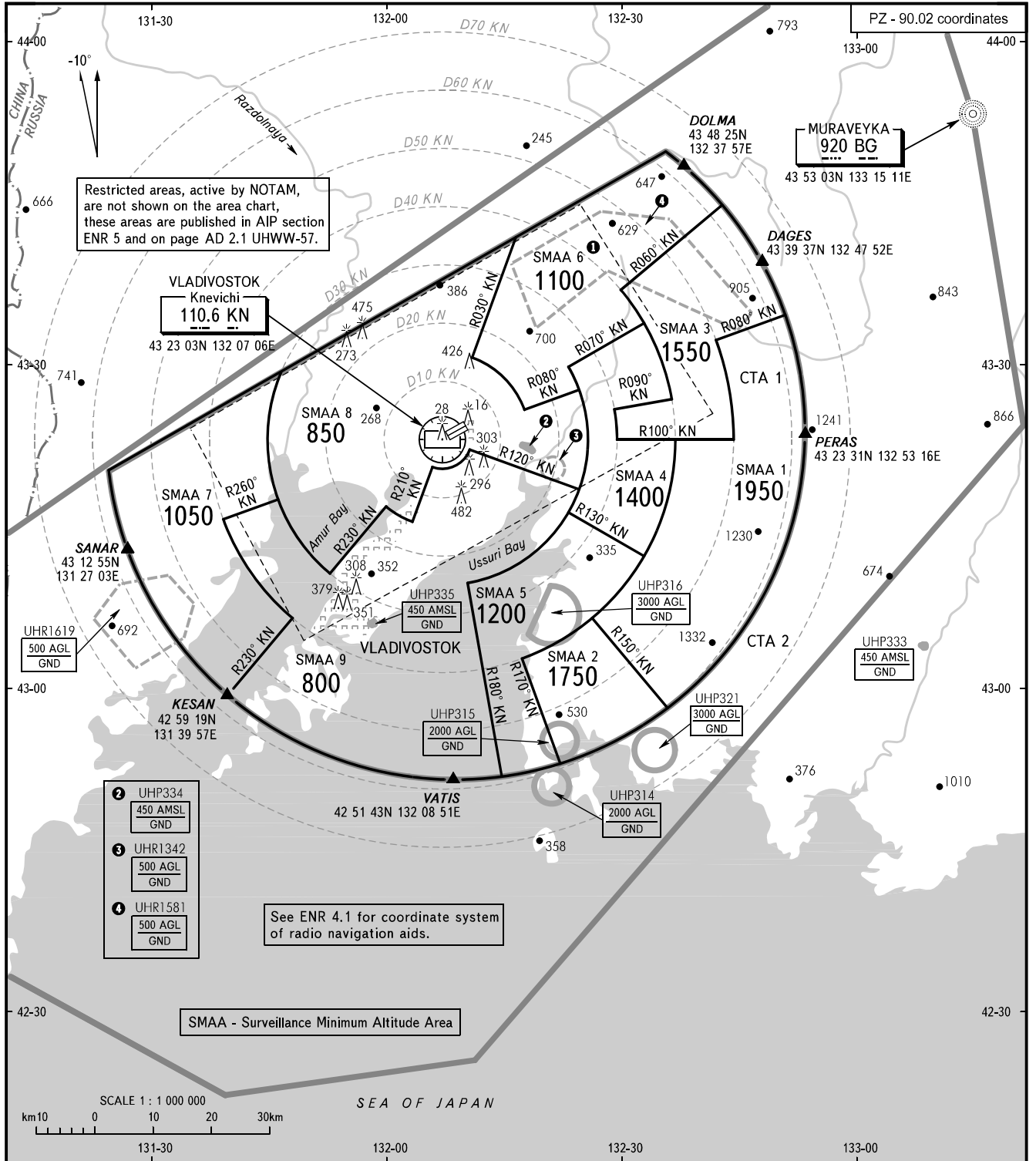
ATC SURVEILLANCE MINIMUM
ALTITUDE CHART - ICAO

ELEV
18m

TRANSITION HEIGHT : (1800)

VLADIVOSTOK, RUSSIA

KNEVICHY



APPROACH	124.700	<p>WARNING:</p> <p>1. The chart may only be used for cross-checking of altitudes assigned while the aircraft is under radar control.</p> <p>2. When vectoring is carried out under low-temperature conditions, minimum vectoring altitudes for IFR flight must be corrected by altimeter temperature correction.</p> <p>1 The restriction is not applicable to flights carried out according to SID and approach charts of VLADIVOSTOK/Knevichi AD.</p>
RADAR	123.400	
TOWER	119.500	

BEARINGS AND TRACKS ARE MAGNETIC
ALTITUDES, HEIGHTS AND ELEVATIONS ARE IN METRES
DISTANCES ARE IN KILOMETRES

VLADIVOSTOK, RUSSIA
KNEVICH I

SURVEILLANCE MINIMUM ALTITUDE AREAS		
IDENT	MNM ALT	LATERAL LIMITS (PZ-90.11 coordinates)
SMAA 1	1950	433212N 1324158E – 433429N 1325050E, then along CTA 1 boundary to 425806N 1323533E – 430629N 1322603E, then counterclockwise by arc of a circle radius of 40 KM centred at 432303N 1320706E to 432259N 1323642E – 432257N 1324406E, then counterclockwise by arc of a circle radius of 50 KM centred at 432303N 1320706E to 433212N 1324158E.
SMAA 2	1750	430629N 1322603E – 425806N 1323533E, then along CTA 1 boundary to 425259N 1322159E – 430245N 1321710E, then counterclockwise by arc of a circle radius of 40 KM centred at 432303N 1320706E to 430629N 1322603E.
SMAA 3	1550	433654N 1322952E – 434444N 1324254E, then along CTA 1 boundary to 433429N 1325050E – 433212N 1324158E, then clockwise by arc of a circle radius of 50 KM centred at 432303N 1320706E to 432257N 1324406E – 432301N 1322918E, then counterclockwise by arc of a circle radius of 30 KM centred at 432303N 1320706E to 432550N 1322859E – 432644N 1323617E, then counterclockwise by arc of a circle radius of 40 KM centred at 432303N 1320706E to 433654N 1322952E.
SMAA 4	1400	432947N 1322309E – 433348N 1323249E, then clockwise by arc of a circle radius of 40 KM centred at 432303N 1320706E to 432644N 1323617E – 432550N 1322859E, then clockwise by arc of a circle radius of 30 KM centred at 432303N 1320706E to 432301N 1322918E – 432259N 1323642E, then clockwise by arc of a circle radius of 40 KM centred at 432303N 1320706E to 431213N 1323240E – 431617N 1322306E, then counterclockwise by arc of a circle radius of 25 KM centred at 432303N 1320706E to 432947N 1322309E.
SMAA 5	1200	431617N 1322306E – 431213N 1323240E, then clockwise by arc of a circle radius of 40 KM centred at 432303N 1320706E to 430245N 1321710E – 425259N 1322159E, then along CTA 1 boundary to 425148N 1321436E – 430946N 1321018E, then counterclockwise by arc of a circle radius of 25 KM centred at 432303N 1320706E to 431617N 1322306E.
SMAA 6	1100	434148N 1321631E, then along CTA 1 boundary to 434444N 1324254E – 433654N 1322952E, then clockwise by arc of a circle radius of 40 KM centred at 432303N 1320706E to 433348N 1323249E – 432947N 1322309E, then clockwise by arc of a circle radius of 25 KM centred at 432303N 1320706E to 432739N 1322431E – 432549N 1321733E, then counterclockwise by arc of a circle radius of 15 KM centred at 432303N 1320706E to 433040N 1321055E – 434148N 1321631E.
SMAA 7	1050	432917N 1314635E, then counterclockwise by arc of a circle radius of 30 KM centred at 432303N 1320706E to 431729N 1314616E – 431537N 1313920E, then counterclockwise by arc of a circle radius of 40 KM centred at 432303N 1320706E to 430629N 1314809E – 425918N 1314001E, then along CTA 1 boundary to 432917N 1314635E.
SMAA 8	850	434148N 1321631E – 433040N 1321055E, then clockwise by arc of a circle radius of 15 KM centred at 432303N 1320706E to 432549N 1321733E – 432739N 1322431E, then clockwise by arc of a circle radius of 25 KM centred at 432303N 1320706E to 431825N 1322428E – 432208N 1321035E, then clockwise by arc of a circle radius of 5 KM centred at 432303N 1320706E to 432031N 1320550E – 431527N 1320319E, then clockwise by arc of a circle radius of 15 KM centred at 432303N 1320706E to 431651N 1315959E – 431038N 1315253E, then clockwise by arc of a circle radius of 30 KM centred at 432303N 1320706E to 432917N 1314635E, then along CTA 1 boundary to 434148N 1321631E.
SMAA 9	800	432208N 1321035E – 431825N 1322428E, then clockwise by arc of a circle radius of 25 KM centred at 432303N 1320706E to 430946N 1321018E – 425148N 1321436E, then along CTA 1 boundary to 425918N 1314001E – 430629N 1314809E, then clockwise by arc of a circle radius of 40 KM centred at 432303N 1320706E to 431537N 1313920E – 431729N 1314616E, then counterclockwise by arc of a circle radius of 30 KM centred at 432303N 1320706E to 431038N 1315253E – 431651N 1315959E, then counterclockwise by arc of a circle radius of 15 KM centred at 432303N 1320706E to 431527N 1320319E – 432031N 1320550E, then counterclockwise by arc of a circle radius of 5 KM centred at 432303N 1320706E to 432208N 1321035E.