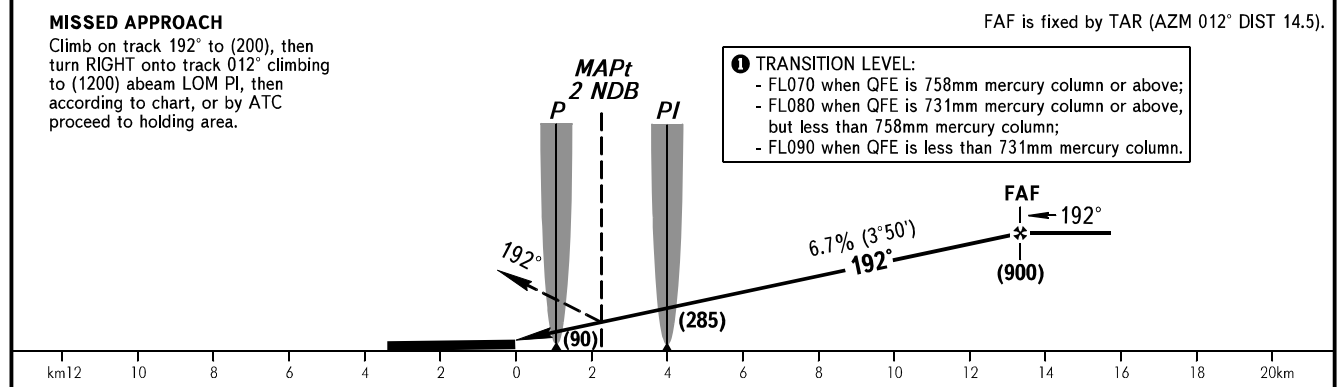
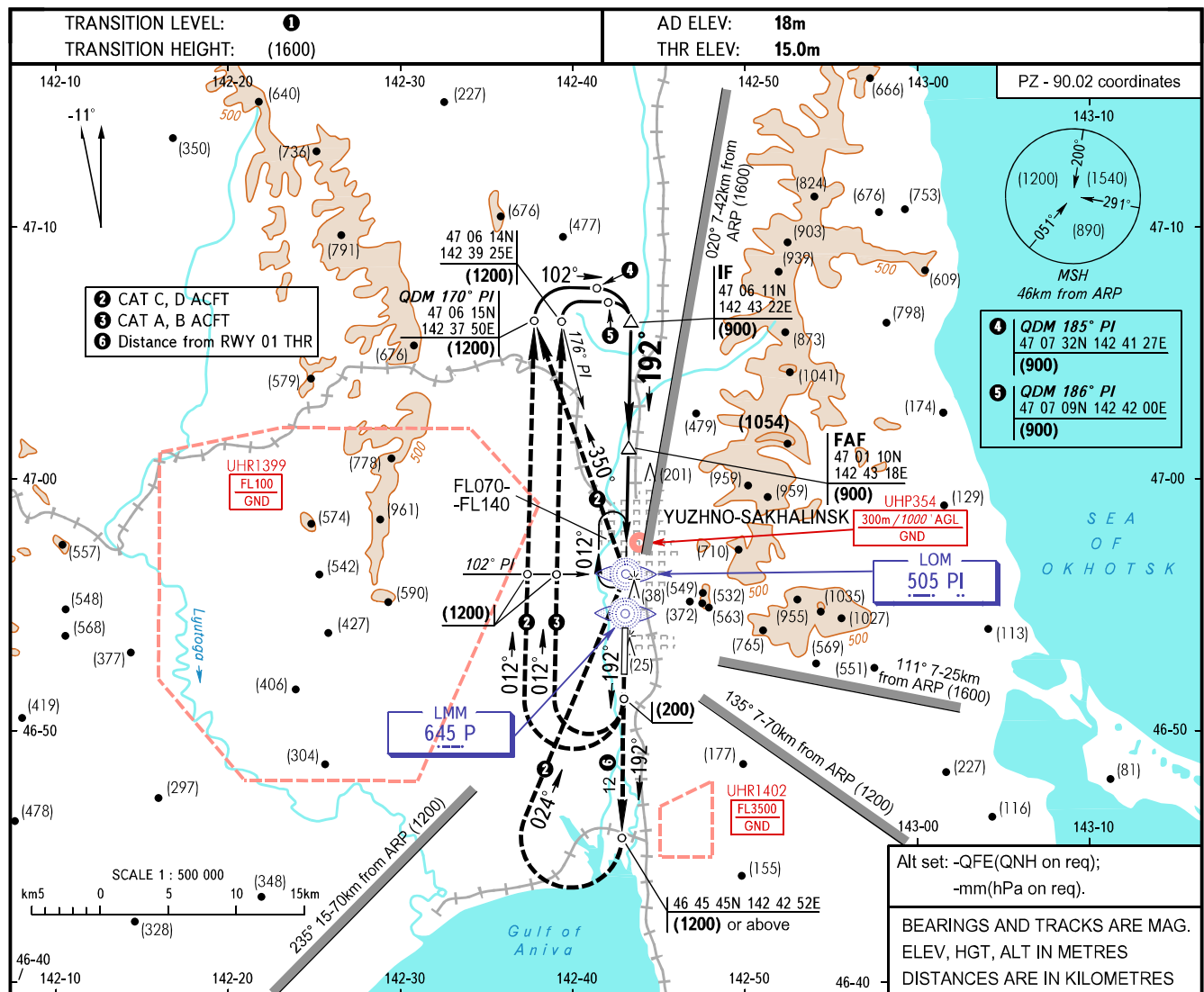


**INSTRUMENT  
APPROACH  
CHART - ICAO**

RADAR **120.600**  
TOWER **122.000**

**YUZHNO-SAKHALINSK, RUSSIA**  
KHOMUTOVO  
**2 NDB, NDB RWY 19**



OCA(H)		A	B	C	D								
Straight-in	<b>2 NDB</b>	135(120)	135(120)	165(150)	165(150)								
	<b>With FAF</b>	645(630)	645(630)	645(630)	645(630)								
Approach	<b>NDB (LMM)</b>	320(305)	320(305)	320(305)	320(305)								
	<b>With FAF</b>	550(535)	550(535)	550(535)	550(535)								
GROUND SPEED		km/h	150	180	210	240	270	300	330	360	390	420	450
RATE OF DESCENT		m/s	2.8	3.3	3.9	4.4	5.0	5.6	6.1	6.7	7.2	7.8	8.3

**WARNING**  
MISSED APPROACH CAT C, D ACFT when restricted area UHR1399 is active: Climb on track 192° to (1200) to DIST 12km from RWY 01 THR, turn RIGHT to LOM PI, then according to approach chart, or by ATC proceed to holding area.