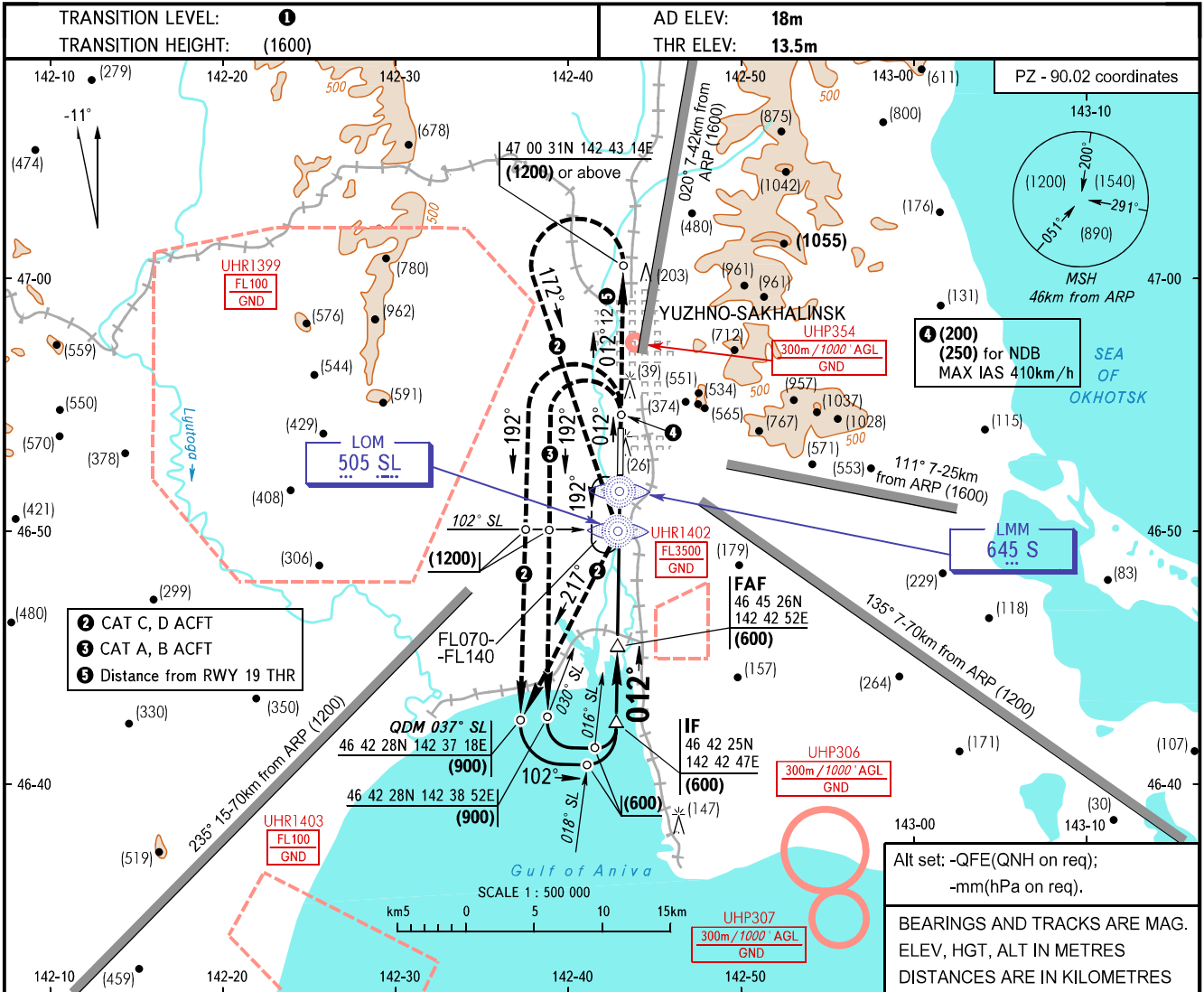


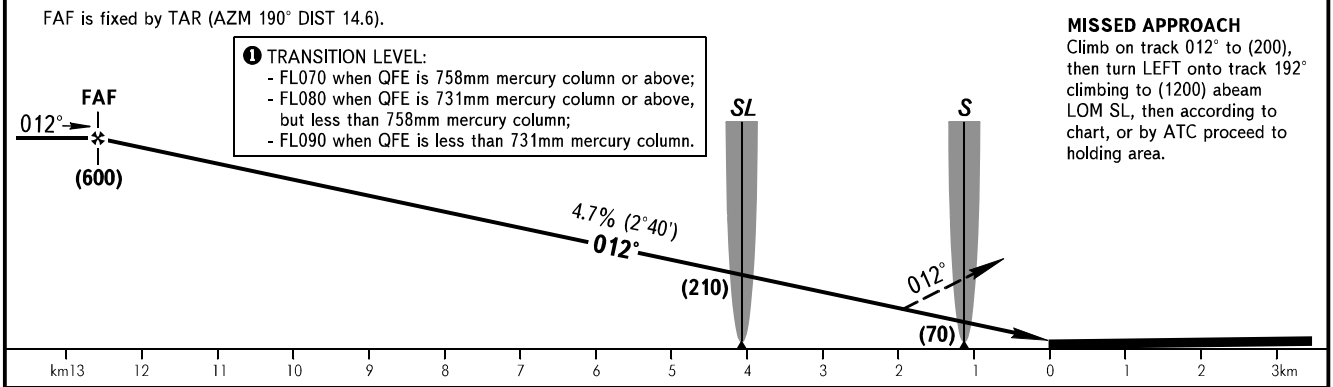
**INSTRUMENT  
APPROACH  
CHART - ICAO**

**YUZHNO-SAKHALINSK, RUSSIA  
KHOMUTOVO  
2 NDB, NDB RWY 01**

RADAR 120.600  
TOWER 122.000



Alt set: -QFE(QNH on req);  
-mm(hPa on req).  
BEARINGS AND TRACKS ARE MAG.  
ELEV, HGT, ALT IN METRES  
DISTANCES ARE IN KILOMETRES



OCA(H)		A	B	C	D	
Straight-in Approach	2 NDB	With FAF	119(105)	119(105)	119(105)	119(105)
		WO FAF	314(300)	314(300)	314(300)	314(300)
	NDB (LMM)	With FAF	144(130)	144(130)	144(130)	144(130)
		WO FAF	264(250)	264(250)	274(260)	274(260)

**WARNING:**  
1. MISSED APPROACH CAT C, D ACFT when restricted area UHR1399 is active: Climb on track 012° to (1200) to DIST 12km from RWY 19 THR, turn LEFT to LOM SL, then according to approach chart, or by ATC proceed to holding area.  
2. LOM SL is located at 65m west of RWY centre line.

GROUND SPEED	km/h	150	180	210	240	270	300	330	360	390	420	450
RATE OF DESCENT	m/s	2.0	2.4	2.7	3.1	3.5	3.9	4.3	4.7	5.1	5.5	5.9

CHANGE: New chart