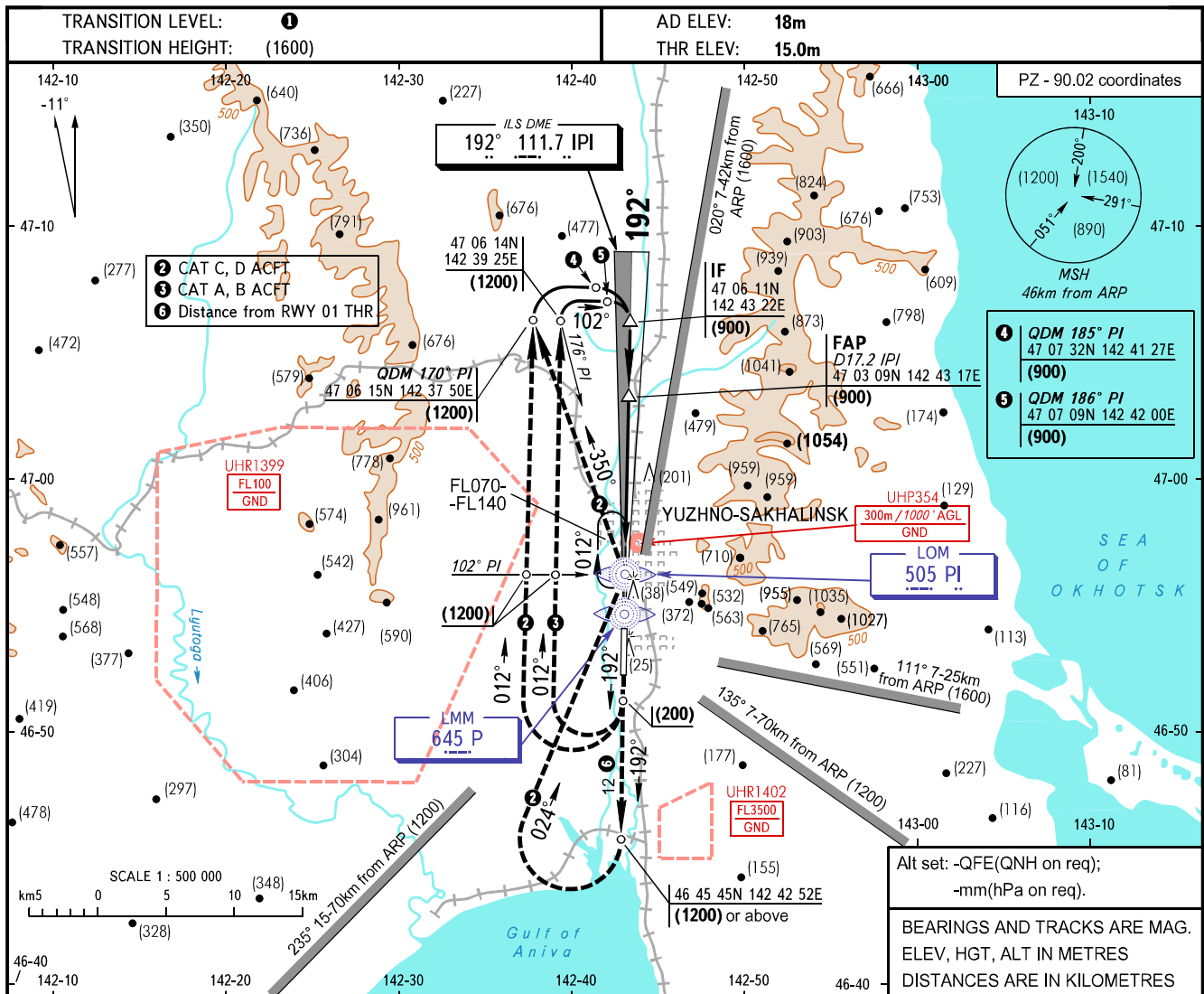


**INSTRUMENT
APPROACH
CHART - ICAO**

**YUZHNO-SAKHALINSK, RUSSIA
KHOMUTOVO
ILS CAT I RWY 19**

RADAR **120.600**
TOWER **122.000**

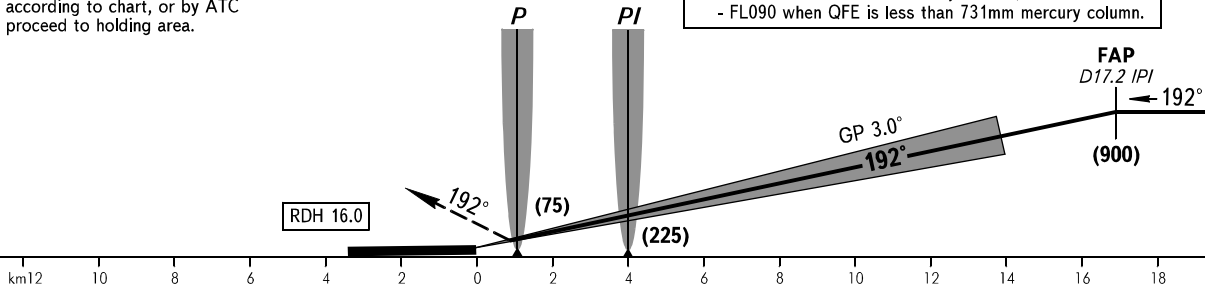


MISSED APPROACH

Climb on track 192° to (200), then turn RIGHT onto track 012° climbing to (1200) abeam LOM PI, then according to chart, or by ATC proceed to holding area.

① **TRANSITION LEVEL:**

- FL070 when QFE is 758mm mercury column or above;
- FL080 when QFE is 731mm mercury column, but less than 758mm mercury column;
- FL090 when QFE is less than 731mm mercury column.



OCA(H)		A	B	C	D								
Straight-in	CAT I	58(43)	61(46)	65(50)	70(55)								
	Approach												
GROUND SPEED		km/h	150	180	210	240	270	300	330	360	390	420	450
RATE OF DESCENT		m/s	2.2	2.6	3.0	3.5	3.9	4.3	4.8	5.2	5.6	6.1	6.5

WARNING

MISSED APPROACH CAT C, D ACFT
when restricted area UHR1399 is active:
Climb on track 192° to (1200) to DIST 12km from RWY 01 THR, turn RIGHT to LOM PI, then according to approach chart, or by ATC proceed to holding area.