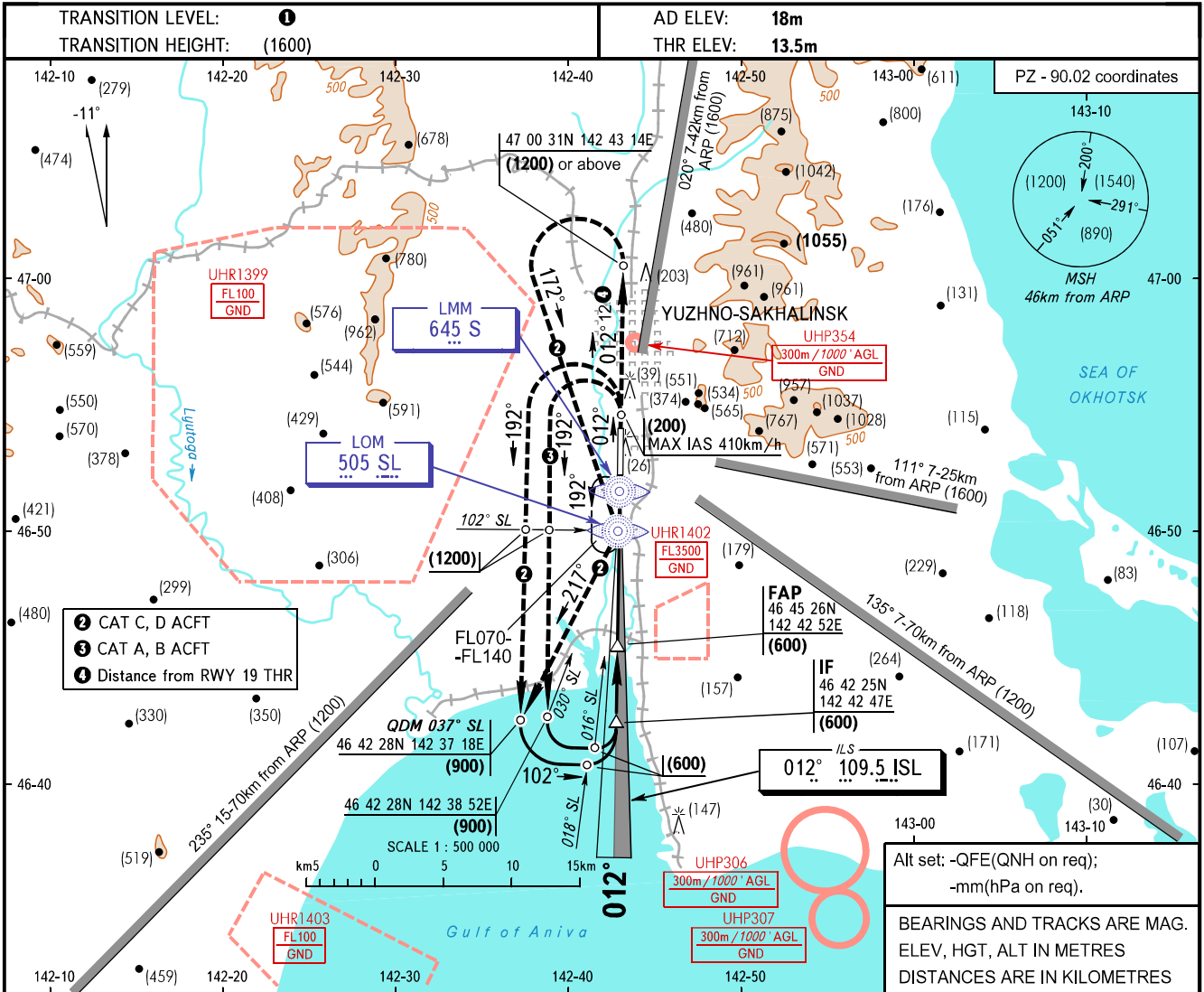


**INSTRUMENT  
APPROACH  
CHART - ICAO**

**YUZHNO-SAKHALINSK, RUSSIA  
KHOMUTOVO  
ILS CAT I RWY 01**

RADAR 120.600  
TOWER 122.000



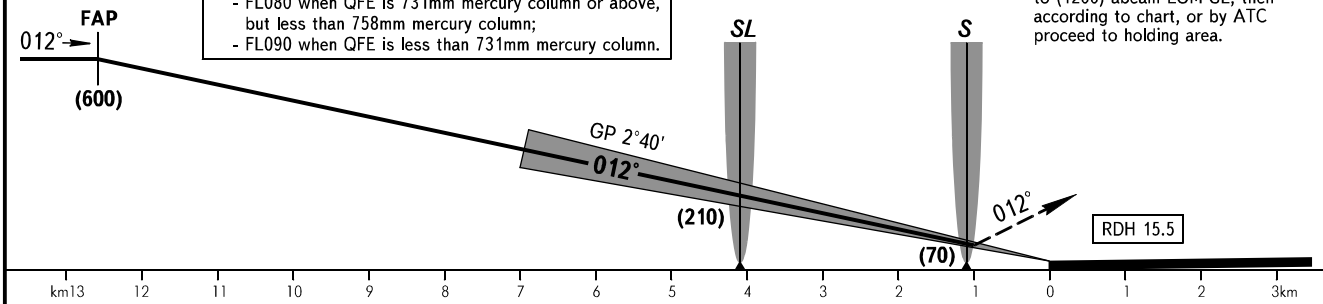
- ② CAT C, D ACFT
- ③ CAT A, B ACFT
- ④ Distance from RWY 19 THR

Alt set: -QFE(QNH on req);  
-mm(hPa on req).

BEARINGS AND TRACKS ARE MAG.  
ELEV, HGT, ALT IN METRES  
DISTANCES ARE IN KILOMETRES

- ① TRANSITION LEVEL:
- FL070 when QFE is 758mm mercury column or above;
  - FL080 when QFE is 731mm mercury column or above, but less than 758mm mercury column;
  - FL090 when QFE is less than 731mm mercury column.

**MISSED APPROACH**  
Climb on track 012° to (200), then turn LEFT onto track 192° climbing to (1200) abeam LOM SL, then according to chart, or by ATC proceed to holding area.



OCA(H)		A	B	C	D
Straight-in	CAT I	56(42)	58(44)	71(57)	74(60)
	Approach				

**WARNING:**

- MISSED APPROACH CAT C, D ACFT when restricted area UHR1399 is active: Climb on track 012° to (1200) to DIST 12km from RWY 19 THR, turn LEFT to LOM SL, then according to approach chart, or by ATC proceed to holding area.
- LOM SL is located at 65m west of RWY centre line.

GROUND SPEED	km/h	150	180	210	240	270	300	330	360	390	420	450
RATE OF DESCENT	m/s	2.0	2.4	2.7	3.1	3.5	3.9	4.3	4.7	5.1	5.5	5.9

CHANGE: New chart